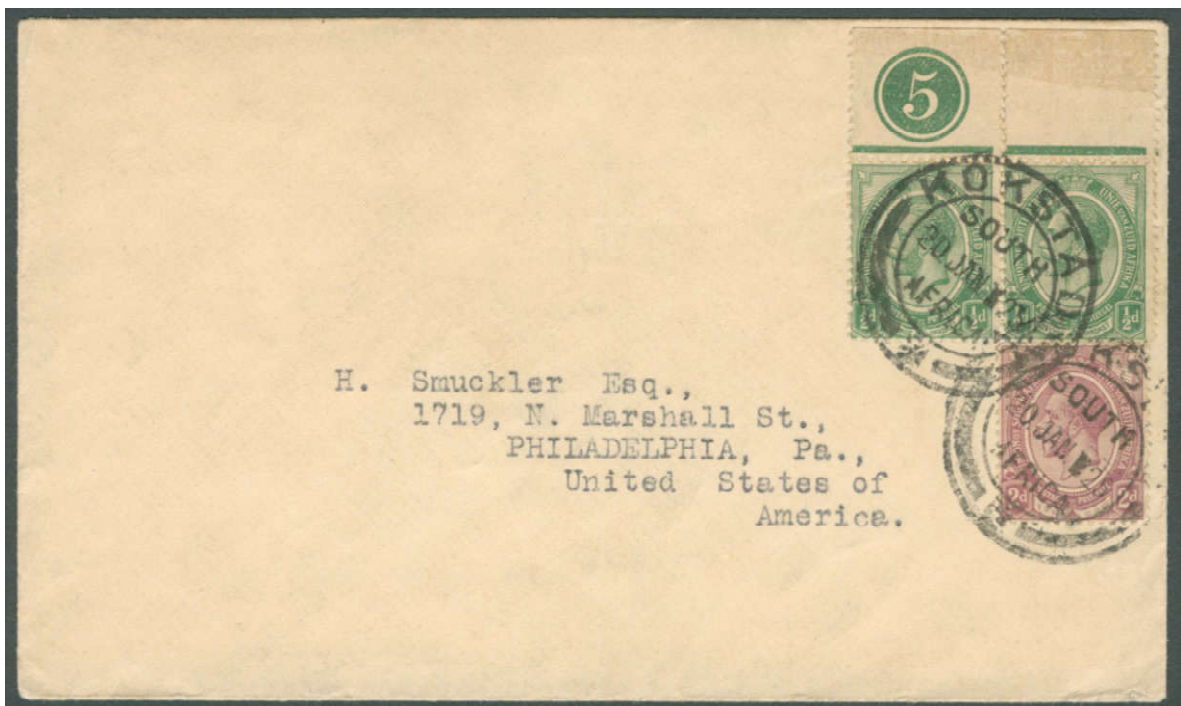


KING'S HEAD POSTAL HISTORY

Postmarks and Cachets used in SOUTH AFRICA & SWA

Steve Hannath
with contributions from
Robert Hill, Tony Howgrave-Graham.



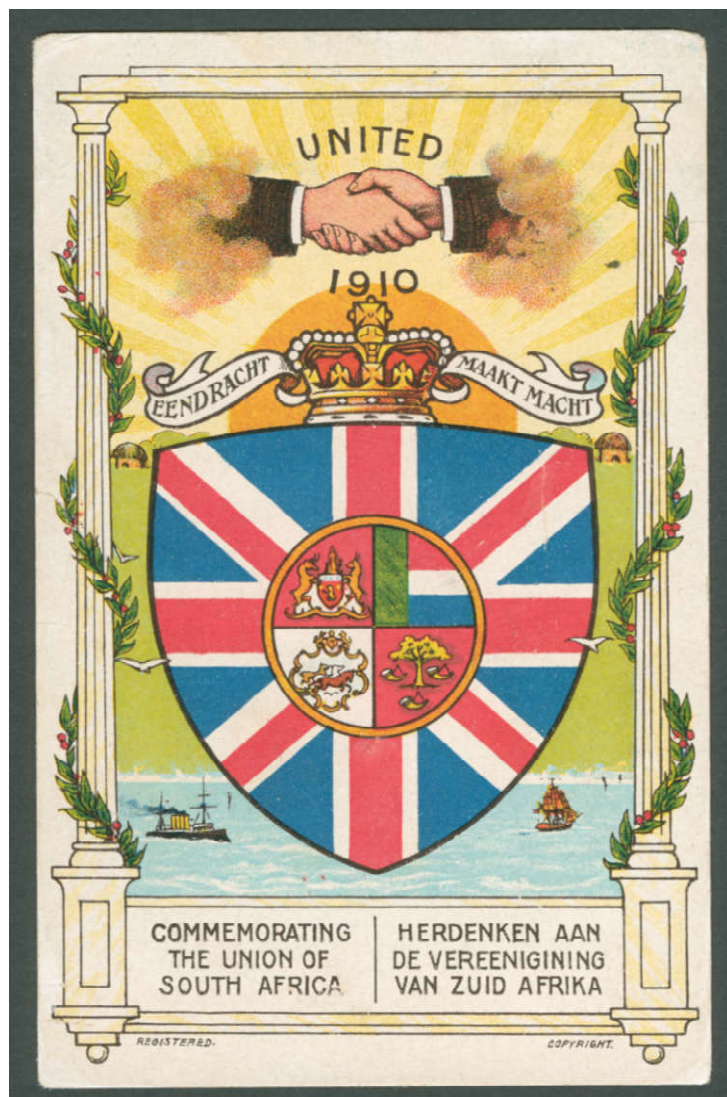
1925. Cover. 2 x ½d green pair +2d purple King's Heads.
Cancelled KOKSTAD SOUTH AFRICA '20 JAN 25' to USA.

This display is the copyright of the South African Philately Club and its Contributors. This material cannot be copied in full or in part without the express written agreement of the Club and its Contributors.

postmaster@southafricanphilatelyclub.com



The Union Of South Africa



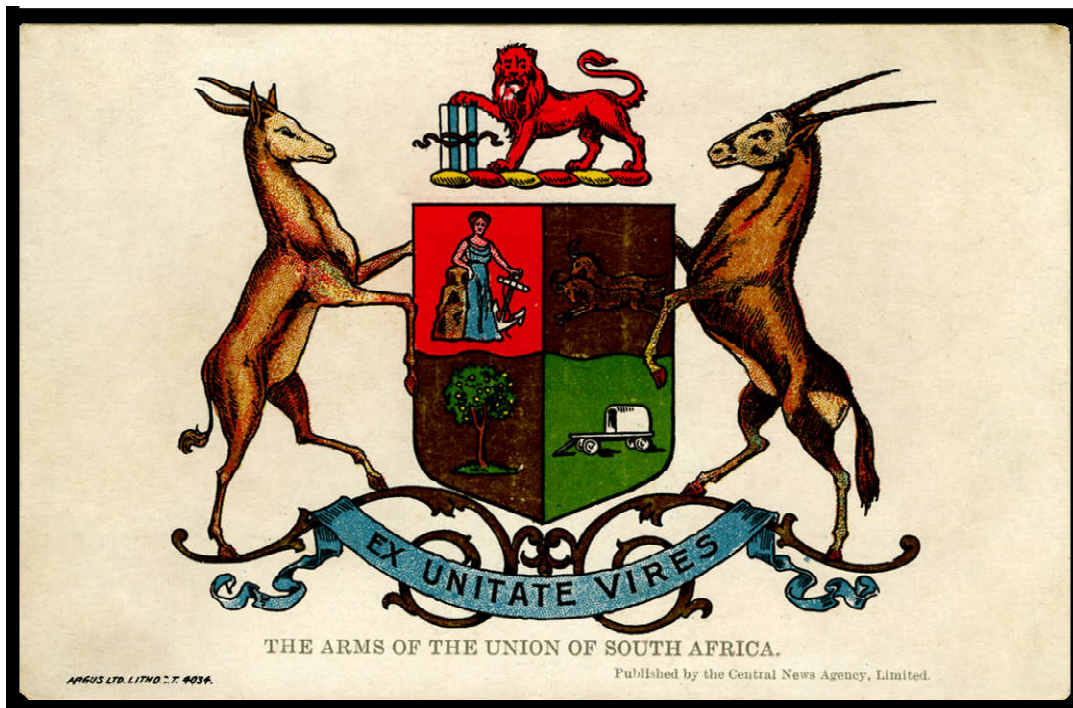
1910. Post Card. An Imperial Handshake with a Nod and a Wink!
Bilingual (English / Dutch) postcard “Commemorating the Union of South Africa”.

Union Postmarks showing ‘South Africa’

The Union of South Africa (Dutch: Vereeniging van Zuid-Afrika) came into being on 31st May 1910. This united the two British colonies of the Cape and Natal with the two Boer Republics of the Transvaal, and the Orange Free State. This union was the culmination of British Imperial policy as pursued in southern Africa during the late 19th Century. Union was made possible by a costly and ruthless British victory over the two belligerent Boer Republics in the South African War (1899 -1902).

Having achieved its imperial goal, Britain allowed a ‘White South Africa’ based on an expedient political ‘marriage of Boer and Brit’, one loyal to King and Empire, to take root. A segregationist construct from the beginning, the new Union of new South Africa offered Blacks little or no political rights. The Union government of Louis Botha and Jan Smuts, two pro-Empire Boer generals, soon appropriated African farmland and placed restrictions on Black movement and residential areas within ‘White South Africa’.

This display shows, among many others, Union datestamps that include ‘SOUTH AFRICA’ within their design. The reason for promoting ‘SOUTH AFRICA’ was to consign the historic struggle between Boer and Brit to the past while creating a shared vision of the country’s new future as a homeland for the emerging White South African race. As a result, these early ‘SOUTH AFRICA’ postmarks are as much a declaration of racial segregation as they are a celebration of the emergence of a new country.



Robert Hill

1910. Post Card. The Arms of the Union of South Africa.
Unilingual (English only). Published by the Central News Agency, Ltd.
Printed by the Argus Ltd, Cape Town.

The South Africa Act which was passed by the British Parliament in 1909 provided for the four former colonies of the Cape of Good Hope, Natal, Orange River Colony and the Transvaal to form the Union of South Africa. The provisions of this Act came into force on 31st May 1910.



The Arms of the United Colonies

These vignettes are enlarged photocopies cut-out by **Robert Hill** from the 1910. King George V 2½d blue 'Opening of the Union Parliament' Commemorative, the First Union of South Africa stamp.



**1910. King George V 2½d blue (white surface).
Opening of the Union Parliament Commemorative.**
This is the First Union of South Africa Stamp.



1910. First Day Cover. 2½d blue cancelled DURBAN NATAL 'NO 4 10' to Bloemfontein.

The death of King Edward 7 and the ascent of King George 5 delayed the release of new Union definitives.

As a result, the Union of South Africa's first stamp is the 2½d blue commemorative (shown above), a propagandist celebration of King, Country and British Empire. When it was issued, the SA rate for a letter from Durban to Bloemfontein was 1d. Awkwardly, this 2½d commemorative was too much for local standard mail (as above) and too much for GB / Empire but enough for mail to Europe and the USA.

To ensure the continued supply of practically valued stamps, it was decided that all colonial stamps of the Edwardian era could be postally used anywhere within the Union. Known as the *'Interprovincials'*, their use overlapped with that of the first King's Heads issue of 1st September 1913.

The Interprovincial Period

The period of Interprovincial usage is debated. Previously, it was thought that this period ran from the 19th August 1910 to the 31st August 1913 when the first twelve stamps of the King's Head definitives issue bought this period to an end. New research shows that this is not correct!



1911. Registered Letter under 1 oz. Cancelled MUIZENBERG 'FE 1 11' to GB.
The 6d postage paid comprises 4d Registration and 2 x 1d per ½ oz or part thereof.
 The Interprovincial postage comprises a 3d mauve OFS used with Cape ½d and 2½d stamps.



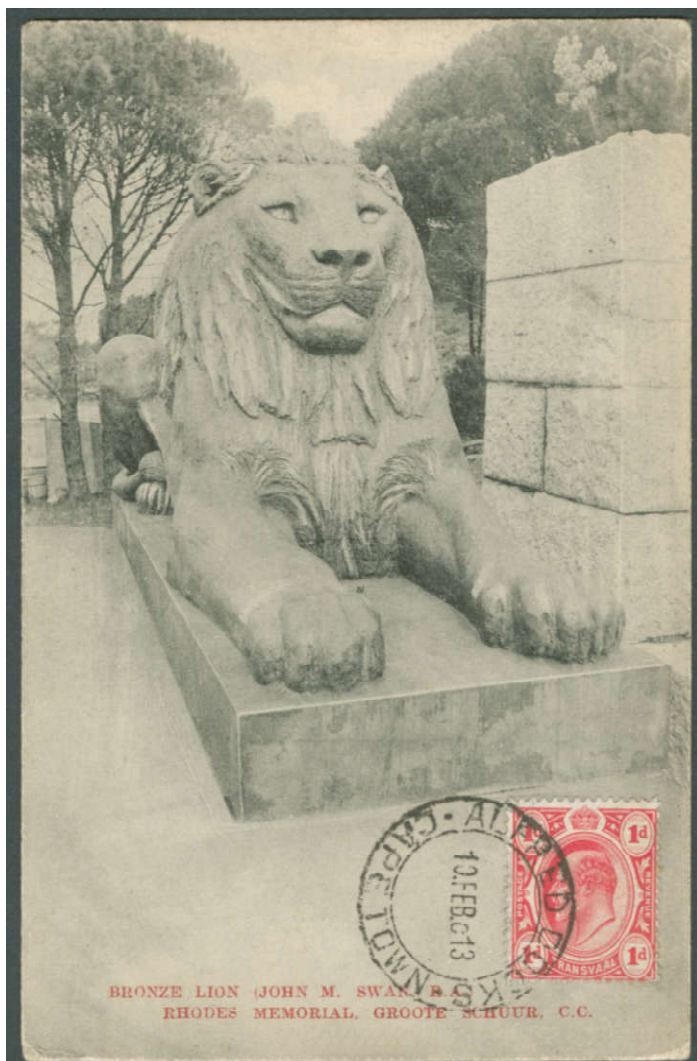
1913. Part Large Envelope. 2½d Union, 5d Natal & Pair 1/- Transvaal stamps used in Natal.
Cancelled DURBAN S. AFRICA '15 AUG 13' to NORWAY. Type 1 datestamp.
 The 2s 7½d (31½d) postage paid comprises 4d Registration and 11 x 2½d per ½ oz or part thereof.

The above is an interesting example of the first Union stamp of 1910 used in conjunction with colonial issues from Natal and Transvaal to pay a postage rate of 2s 7½d to Norway. It also shows an example of the period's Type 1 Unilingual S.AFRICA datestamp, of which more will be seen in this display.

Hugh Amore advises that “The stamps of the ORC, Transvaal, Cape and Natal, (except those that had been demonetized), were valid in the Union from 31st May 1910 to 31st December 1937. The Gazette Notice of 19th August 1910 was (a) issued by the Treasury, not the Post Office, and (b) validated the interprovincial usage of REVENUE stamps. That it has been misinterpreted for so many years is due to the fact that the Gazette heading (“Treasury - Department of Finance”) was omitted in all the handbooks.”

Amore states that it is incorrect to claim that "the Interprovincial period of use runs from 19th August 1910 to 31st August 1913" (whereafter the King's Heads came out). This common misconception has, he says, “been definitively debunked by Chris Board,” now an RDPSA signatory. Colonial stamps were in use from the 31st May 1910 up until 31st December 1937, thus spanning the King's Head issue and all subsequent issues up to end-1937.

Tony Howgrave-Grahams has a superb and large Interprovincial collection. He says “the first Interprovincials began on 1st June 1910. As the general public were not advised, early examples are mostly governmental (telegraphs and revenues). The public were only informed by a Gazette notice on 19th August. The only civilian example I have of earlier mail is 15th August. Traditionally, this period continues until the King's Heads were issued on 1st September 1913 but that's fairly arbitrary as the 1½d, 1/3d and £1 values were issued later. And, we don't have an issue date for Postage Dues.”



**1913. Transvaal
Block x 6 10/- cancelled
in the Cape.
PORT ELIZABETH
SOUTH AFRICA
'14 JUN 13'.
Type 1 datestamp.**

**LEFT
A Rhodes Memorial
Lion, a symbol of
British Power and
Rhodes' Imperialism.**

The inscription on the reverse reads:
*“This is another
memorial to Cecil
Rhodes. The Cape
Colony is full of them,
different kinds in all the
Public Parks of the
Colony”.*

**1913. Post Card.
1d red Transvaal stamp
used in the Cape cancelled
ALFRED DOCKS,
CAPE TOWN
'10 FEB 13'
to GB.
1d is the correct rate for
a postcard to England.**

The First Union of South Africa Definitives

The first South African definitive issue is commonly called "*The King's Heads*".

There are fifteen stamps in the King's Head issue. The first twelve were released on 1st September 1913. A £1 stamp was issued in July 1916 and a 1½d chestnut and a violet 1s 3d in 1920.



1913 - 1920. Complete Used Set of the Final 15 King's Head Definitives (King George V.)



1913. Post Card uprated with ½d green cancelled CERES 'DE 5 13' to AUSTRIA. The rate paid for this post card to Austria is 1d. The datestamp is an old Cape Colony issue.

The Post Card with ½d yellow-green King's Head is an early example (1913). South Africa would soon be at war with Austria and Germany, their nationals interned in SA.

SA Type 1: Unilingual 'S. AFRICA'



PORT ELIZABETH 1 1914



DURBAN 1914



HERMANUS 1914



ROBERTS HEIGHTS 1914



STELLENBOSCH 1914



JOHANNESBURG 22 1915



GRAHAMSTOWN 1915



PORT ELIZABETH 1 1915



ORANGE RIVER 1915



MATATIELE 1922



SALT RIVER 1924

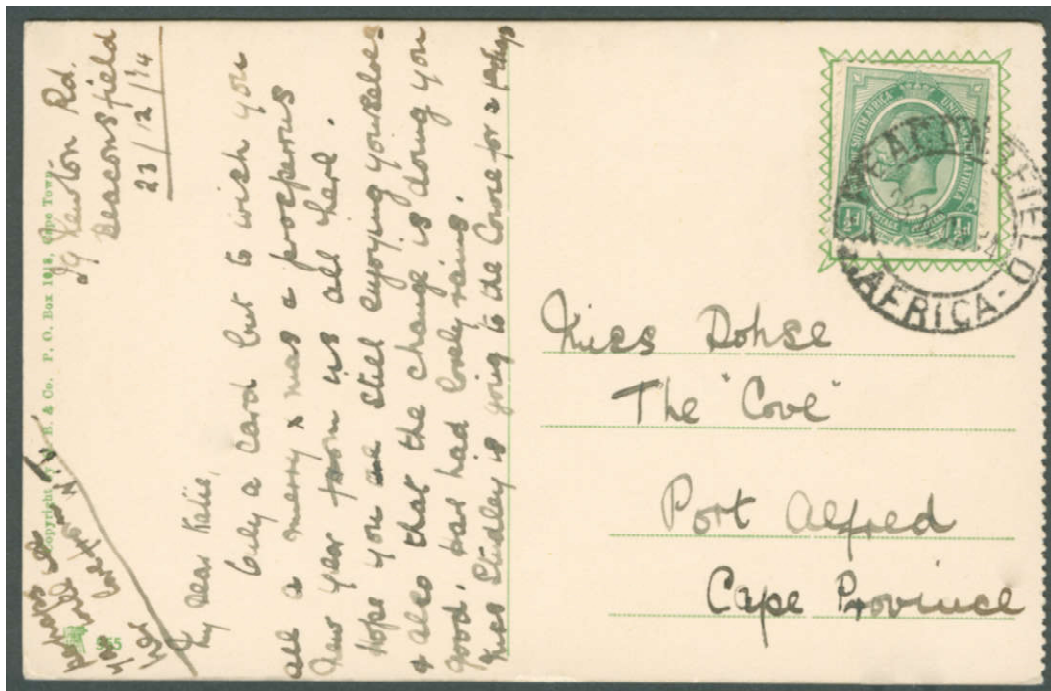
CAN YOU HELP?

As South Africa did not exist as a legal entity before 1910, these SA Type 1 datestamps with 'S. AFRICA' at the base of the inner double circle most likely date from Union in 1910 or shortly thereafter. I have seen them used from mid-1912 but have not yet seen examples earlier than that.

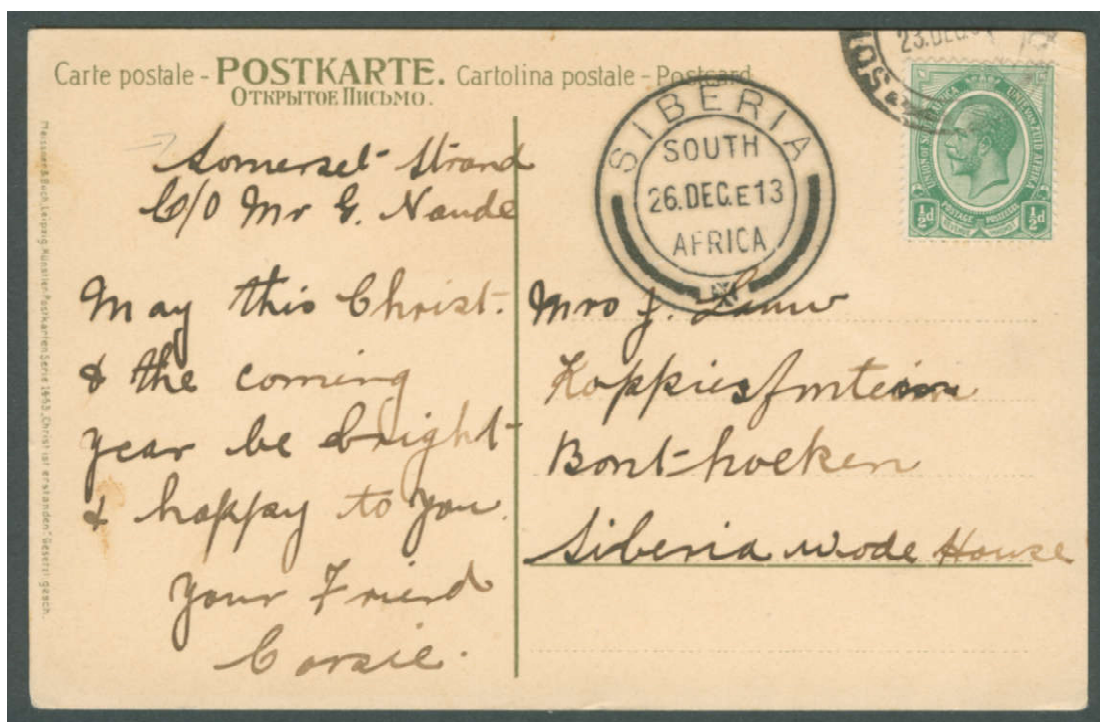
Readers are kindly asked to submit early examples of datestamps showing "S. AFRICA", please.

Tony Howgrave-Graham advises that "Union cancellers didn't make much of an appearance before June 1912 and weren't in general use until 1913 though a few specially designed ones appeared earlier, such as Cape Town South Africa with black triangle in its centre (for bulk mail) which I've seen in January 1912."

Early Use of King's Head Stamps in South Africa: Pre-War 1913 - 1914



1913. Post Card. 1/2d green affixed & cancelled BEACONSFIELD SOUTH AFRICA '23 DEC 14'.
 Posted to PORT ALFRED at the 1/2d post card domestic rate. SA Type 1 Postmark.



1913. Post Card. 1/2d green affixed & cancelled SOMERSET STRAND '23 DEC 13'.
 Received' SIBERIA SOUTH AFRICA '26 DEC 13'. SA Type 2 Postmark.
 A 1/2d is the correct rate for postcards posted domestically within South Africa.

Robert Hill

Although Revenue stamps are not within the remit of this display, one is shown below because of its similarities to the King's Head postage stamps. Its much larger size is the most obvious difference.



1913. Revenue Stamp - A Christmas Present for the Taxman

Cancelled 'INLAND REVENUE UNION OF SOUTH AFRICA 23 DEC 13'.

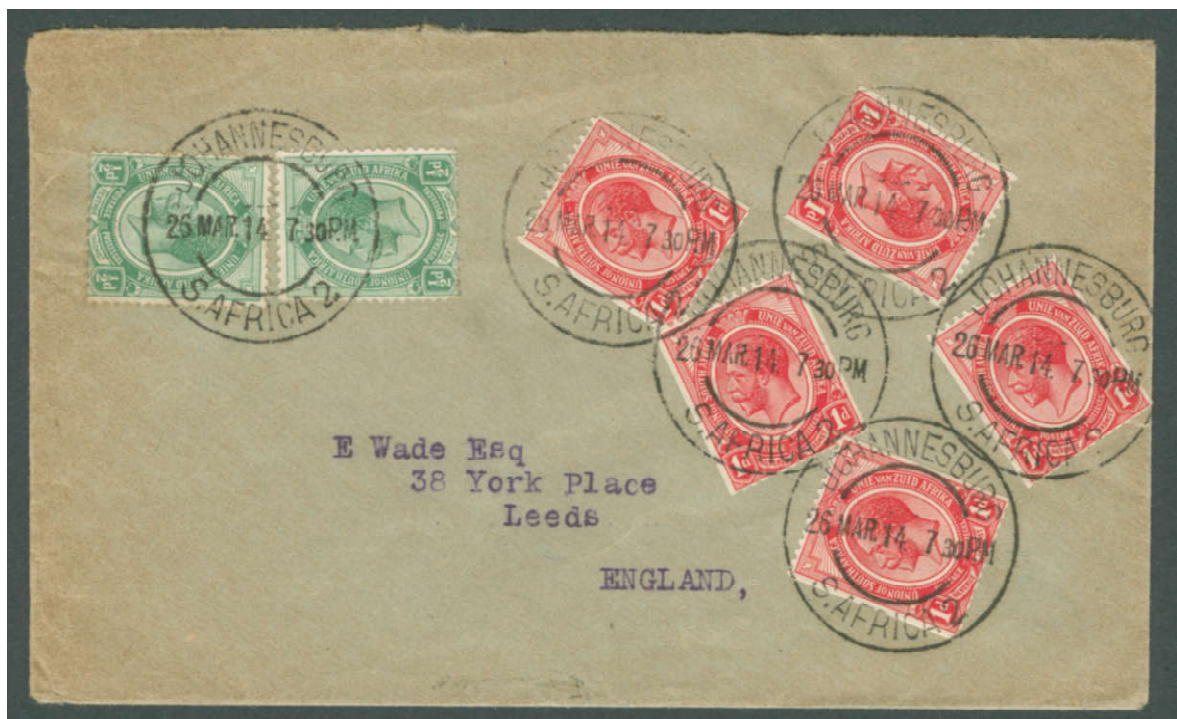
On paying his taxes, an old Boer commented, "nou moet ons kuk en betaal vir die Empire".

Voteless Black South Africans would no doubt have agreed!



1914. Block 4 x 1/- orange cancelled KLOOF STREET, CAPE TOWN 'JA 9 14'.

Possibly Telegraphic Use. This is not listed with Putzel. Alex Visser has it as No. 5x.



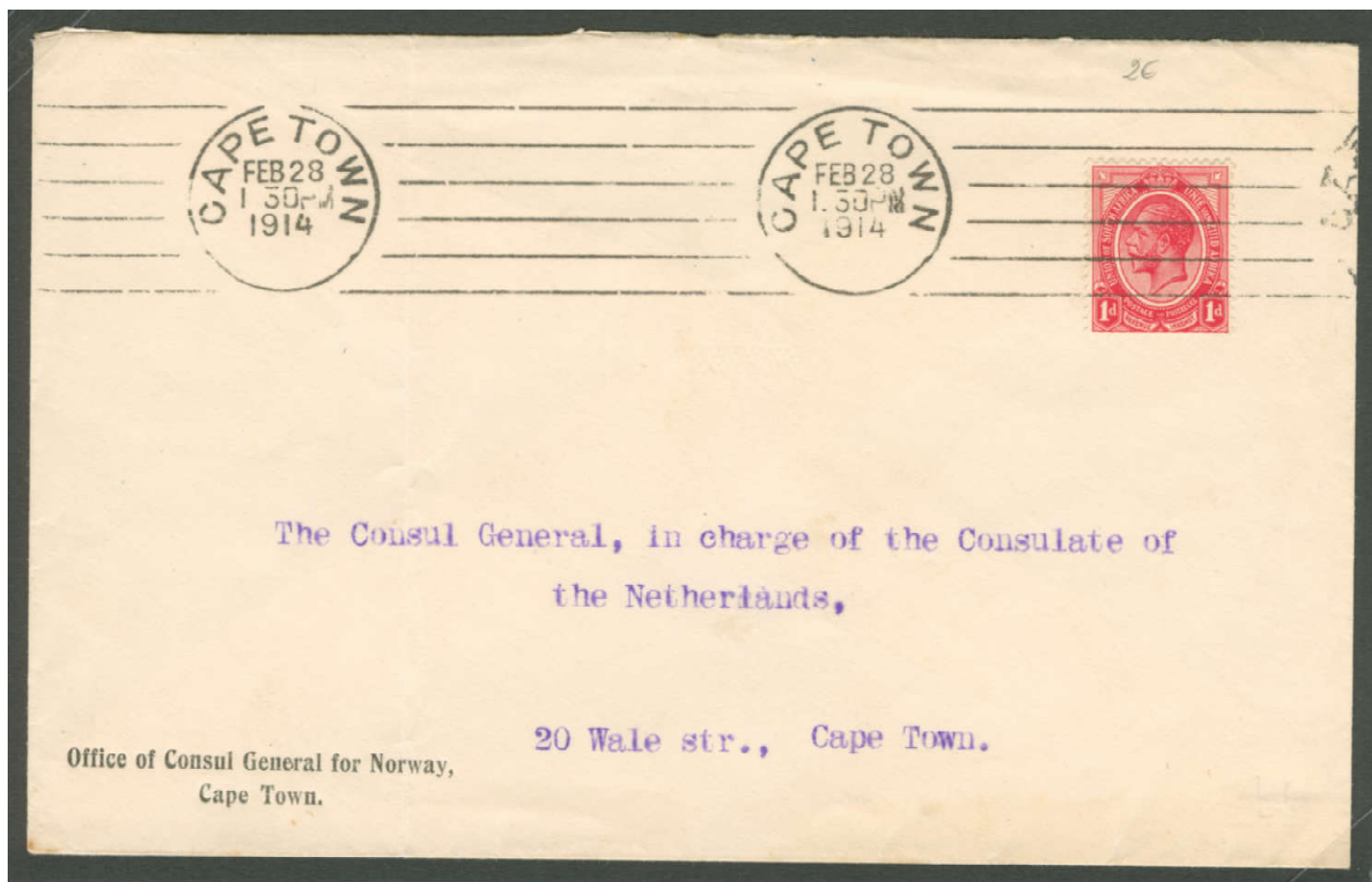
1914. Cover. 1/2d green pair & 5 x 1d red coils (6d) cancelled JOHANNESBURG S. AFRICA 2 '26 MAR 14'.

This peculiar layout and the 6d paid on what should be 1d or 2d letter to GB makes this philatelic. SA Type 1.



Robert Hill

1914. Pair 1d red cancelled CAPE TOWN SOUTH AFRICA '21 FEB 14'.
Possibly used locally or on mail to GB. SA Type 1.



Robert Hill

1914. Cover. 1d red cancelled CAPE TOWN 'FEB 28 1914'. Cape Town Local post.
The 1d red has been defaced with the Cape Town Six Bar Machine Cancellor (MC).



1914. Two Pieces with 1d red cancelled CAPE TOWN SOUTH AFRICA 9 '22 MAY 14' and 2 '25 SEP 14'.
These are SOUTH AFRICA Type 2 cancellers - See Next.

SA Type 2: Unilingual 'SOUTH AFRICA'

This large unilingual (English only) Double Circle datestamp is distinguished by 'SOUTH' above and 'AFRICA' below the date slug. This datestamp comes in variety of different designs. See examples below.

The equality of English and Dutch was resisted at first by the British, then conceded. These datestamps reflect the early Imperial belief that South Africa was now 'British'. However, the Union government of ex-SAW Generals Louis Botha and Jan Smuts would insist the country was home to both Boer and Brit!



Numeral at base.



Bare at base/divided inner circle.



Bare at base/divided inner circle.



Maltese Cross at base.



"Natal" at base



Bare at base/double circle



1913. Post Card. 1d red affixed & cancelled CAPE TOWN SOUTH AFRICA 2 '23 SEP 14' to GB.

A 1d is the correct rate for postcards posted from South Africa to GB.

SA Type 2: Numeral at Base with Curved Bars.



1916. Post Card Piece. 1d red affixed & cancelled EAST LONDON SOUTH AFRICA 2 '18 JUL 16'.

The incomplete postmark on the right has been partially recreated from its companion on the left.

SA Type 2: Numeral at Base with Curved Bars.



1916. Piece. 1/2d green & 1d red cancelled ESTCOURT SOUTH AFRICA '5 APR 21'.

1 1/2d is the correct rate for postcards posted from South Africa to Europe.

SA Type 2: Maltese Cross at Base with Curved Bars.

Pre-War Machine Cancellers of Johannesburg



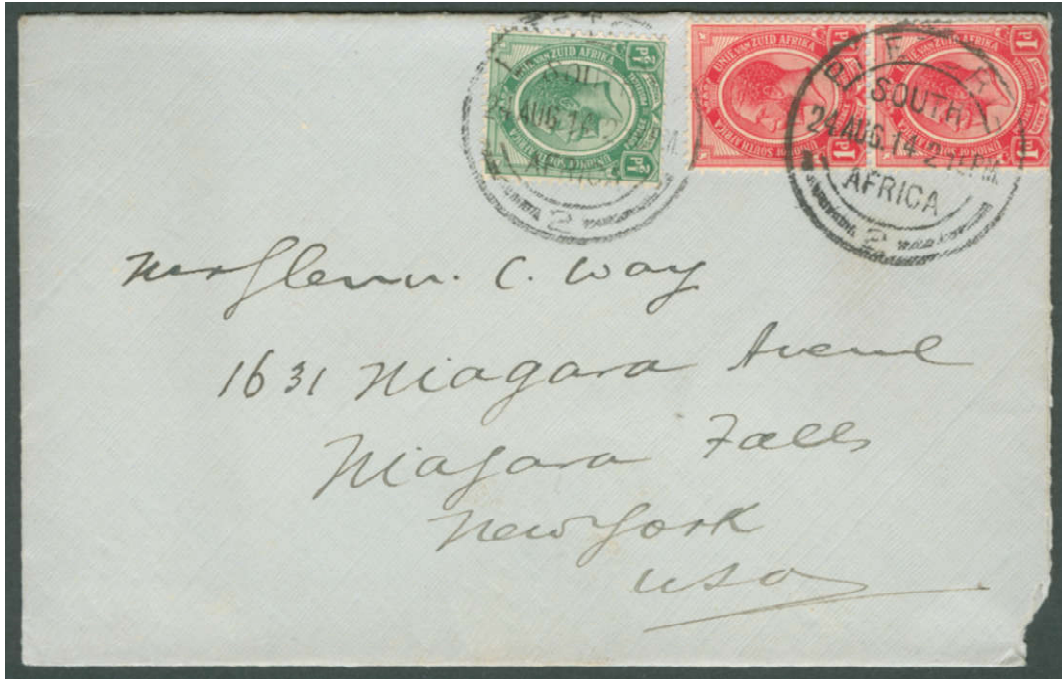
1913. Cover. 1d red MC cancelled JOHANNESBURG 'SEP 18 1913' to GB.
The GB Letter rate of 1d has been defaced with the Johannesburg Narrow Eight Bar MC.



1914. Cover. 1d red MS cancelled JOHANNESBURG SOUTH AFRICA 'JUL 23 1914' to GB.
The GB Letter rate of 1d has been defaced with the Johannesburg Wide Five Bar (MC).

Start of the First World War (WW1): 1914

South Africa entered WW1 on 4th August 1914 when GB (Great Britain) declared war on Germany. SA declared its support for GB on 14th September 1914. Hostilities ceased on 11th November 1918 when an Armistice (ceasefire) with Germany was agreed. The Treaty of Versailles officially ended the war on 28th June 1919. (This probably explains the continued use of censorship in SA into mid-1919.) SA ended its belligerent status on 10th August 1920 with the Treaty of Sèvres signed with Ottoman Empire.



1914. Cover. Pair 1d red with 1/2d green cancelled PRETORIA 2 SOUTH AFRICA '24 AUG 14' to USA.
This rate paid to the USA is 2 1/2d. The war has just started. No Censor marks have been applied. SA Type 2.

SA TYPE 3: BILINGUAL 'S. AFRICA Z. AFRIKA'

'S. AFRICA' appears above the date in English and 'Z. AFRIKA' in Dutch below. "This may be the Union's first bi-lingual datestamp", says Robert Hill. "The earliest and latest dates seen are March 1913 and July 1952. Although the distribution of the datestamp appears to have been spread over a wide area, the issue seems to have been made sparingly. Those seen mainly originate from smaller offices rather than larger ones."

The stamps and pieces below contributed by Robert Hill.



CATHCART 1920



BEAUFORT WEST 1916

The town name is shown in English.
In 1925, bi-lingualism would require it to also be shown as 'Beaufort Wes'!



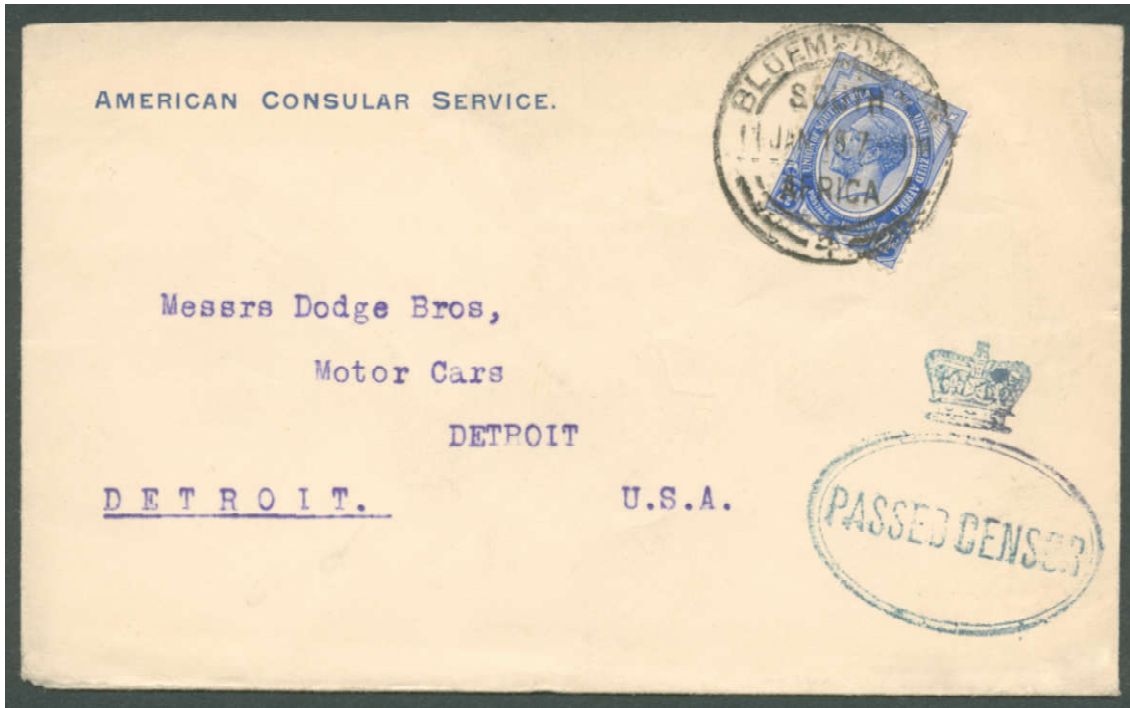
VOLKSRUST 1915



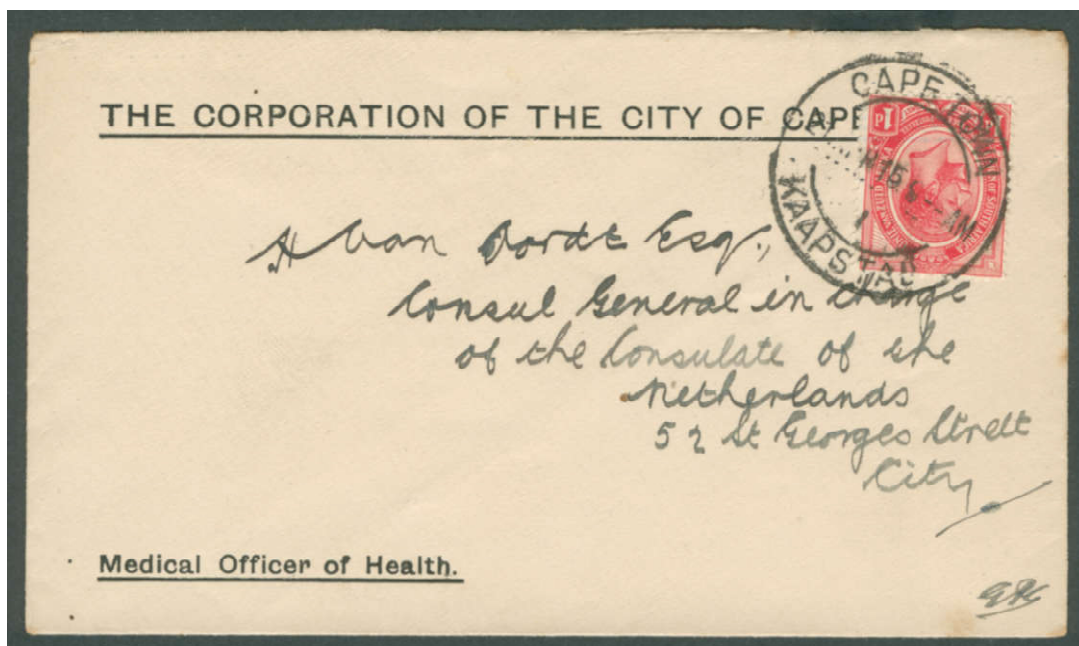
VREDEFORT 1914

Use of King's Head Stamps during WW1: 1914 - 1919

Throughout WW1 the King's Head issue was the only Union of South African set of definitive stamps. As a result, covers bearing the King's Head can be found with or without PC (Passed Censor) cachets and numbered OBC (Opened by Censor) labels on mail. The stamp is widely found on WW1 mail from SWA.



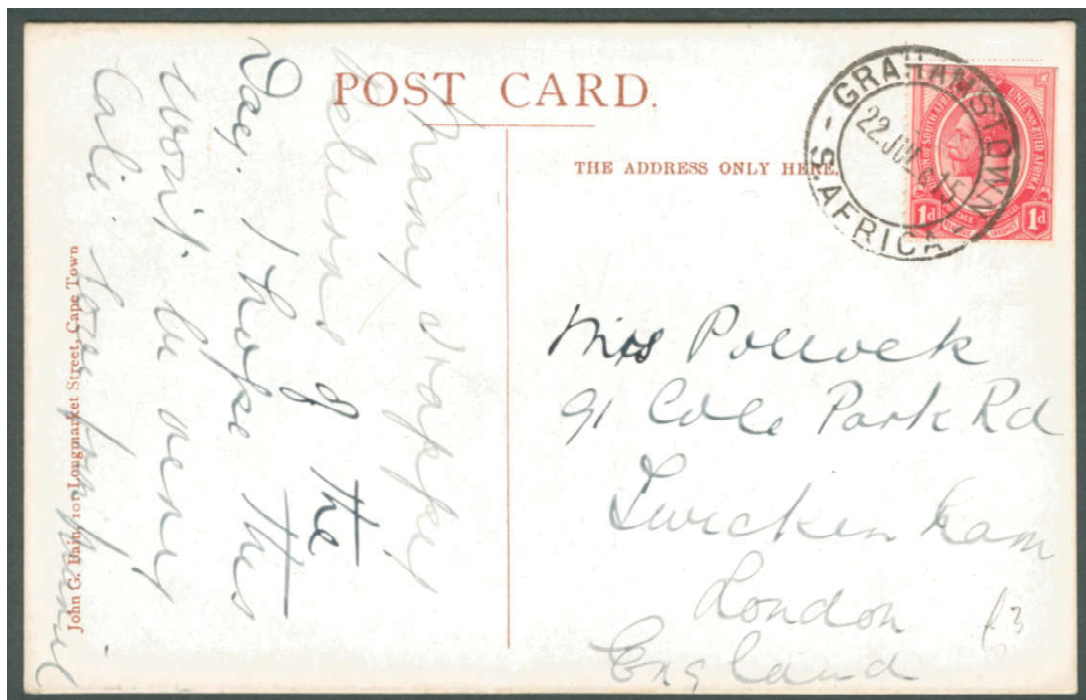
1915. Cover. 2½d blue cancelled BLOEMFONTEIN SOUTH AFRICA 4 '11 JAN 15' to USA. The 2½d blue has been cancelled with a unilingual Type 2 South Africa datestamp with 4 at base. Struck with a fine oval crowned 'PASSED CENSOR' cachet in blue ink. 2½d was the rate paid for a letter under a half ounce to the USA.



1915. Cover. 1d red cancelled CAPE TOWN 1 KAAPSTAD '21 MAR 15'. Cape Town Local Post. The 1d red has been cancelled with a bilingual Cape Town / Kaapstad 1 datestamp.



1915. Block x 16 2d purples cancelled PRETORIA 4 '17 JUN 15'.

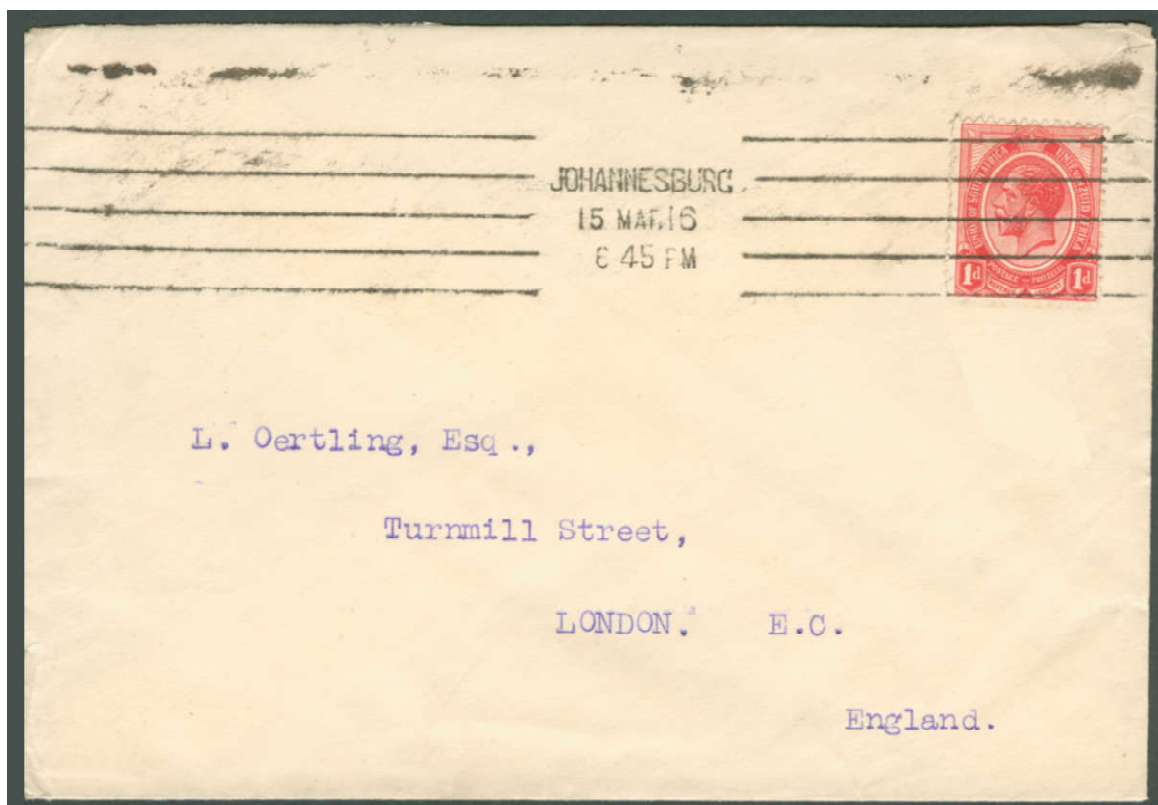


1915. Post Card. 1d red cancelled GRAHAMSTOWN S. AFRICA '22 JUL 15' to ENGLAND. The SA Type 1 postmark is Putzel's No. 19, the first Grahamstown canceller with 'South Africa' at base.



1915. Registered Cover. MC cancelled JOHANNESBURG SOUTH AFRICA '15 MAR 1916' to CAPE TOWN.

Pair 2½d blue. The rate paid for postage 4d (Registration) and 1d postage under ½ ounce.
The Registered Letter rate of 5d has been defaced with the Johannesburg Wide Five Bar (MC).



1916. Cover. 1d red MC cancelled JOHANNESBURG '15 MAR 1916' to GB.

No use of Censorship cachets or labels to England. The rate paid for postage to GB is 1d.
With no enclosing circle, this Wide Five bar MC is quite different to most others shown here.



1916. Cover. ½d green + 2 x 1d reds MC cancelled PRETORIA SOUTH AFRICA 'MAR 23 1916' to HOLLAND.
 The rate paid for postage to Holland is 2½d defaced with the Pretoria Wide Five Bar MC.
 The cover bears a blue PC (Passed Censor) C. 6. cachet.



1916. Registered Cover. 2½d blue MC cancelled PRETORIA 'NOV 1 1916' to HOLLAND.
 The rate paid for postage to Holland is 2½d defaced with the Pretoria Large Letter Wide Five Bar MC.
 The cover bears a blue PC (Passed Censor) C. 6. cachet, suggesting use in Pretoria.



**See Horizontal Image
on Next Page**

**1916. Cover. 13 x 1d red (1/- 1d)
cancelled CAPE TOWN 8 '12 AU 16'
to USA. PC C1.**

The datestamp is a Cape Colony one from the issue of 1900 - 1902. You can tell this from the Time and Date on three lines. When this style of datestamp was adopted by the new South African Post Office after Union, it had the significant difference of having the Time and Date on one line. (One exception is known!)

This cover was not registered. It was sent to the USA at the standard rate of 2½d per ½ oz or part thereof.

Given that it has 13 x 1d red stamps, this would mean that the contents were just under 2½oz requiring 12 stamps. So what was the extra penny for?

There is red manuscript 26c (or 26d) on the bottom left. This may be the US PO calculating the rate after converting it to cents. It appears not to have been taxed.

There is a faint purple cachet stating 'Received Unsealed. Hollywood Station. Los Angeles, Cal., P.O.' To its left is a probable receiving date - 'SEP 19 1916'.

Note that this cover to the USA has been censored in blue in Cape Town prior to dispatch- Passed Censor C1.

Your advice on this cover, please!

**Image Reduced and Rotated
See Previous**



1916. Cover. 13 x 1d red (1/- 1d) cancelled CAPE TOWN 8 '12 AU 16' to USA. PC C1.

The datestamp is a Cape Colony one from the issue of 1900 - 1902. You can tell this from the Time and Date on three lines. When this style of datestamp was adopted by the new South African Post Office after Union, it had the significant difference of having the Time and Date on one line. (One exception is known!)

This cover was not registered. It was sent to the USA at the standard rate of 2½d per ½ oz or part thereof.

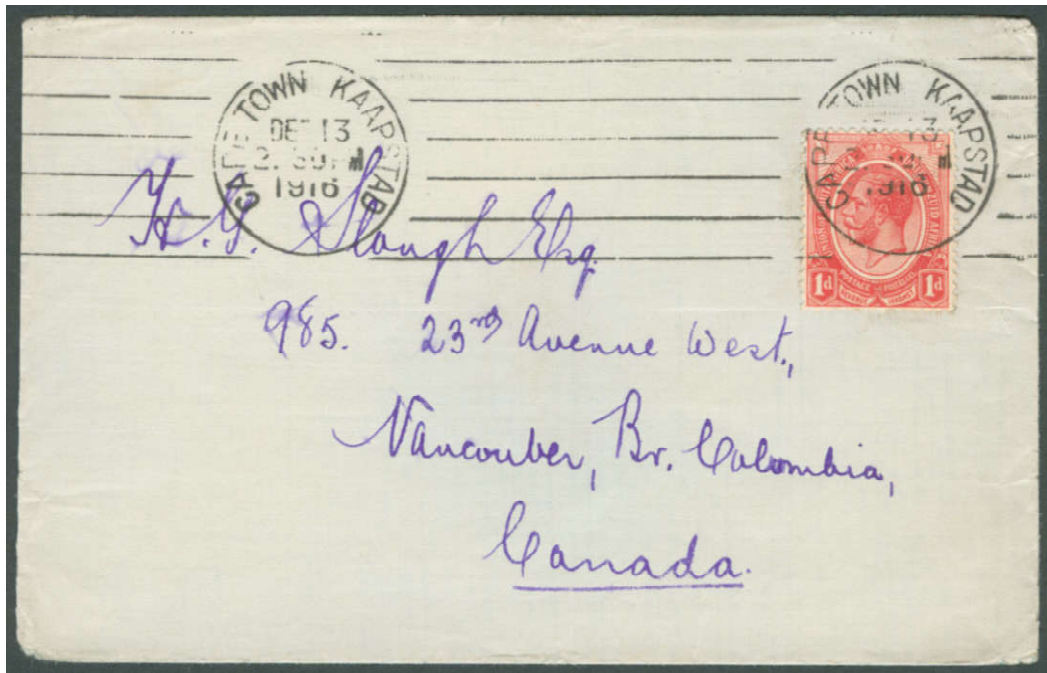
Given that it has 13 x 1d red stamps, this would mean that the contents were just under 2½oz requiring 12 stamps. So what was the extra penny for?

There is red manuscript 26c (or 26d) on the bottom left. This may be the US PO calculating the rate after converting it to cents. It appears not to have been taxed.

There is a faint purple cachet stating 'Received Unsealed. Hollywood Station. Los Angeles, Cal., P.O.' To its left is a probable receiving date - 'SEP 19 1916'.

Note that this cover to the USA has been censored in blue in Cape Town prior to dispatch- Passed Censor C1.

Your advice on this cover, please!



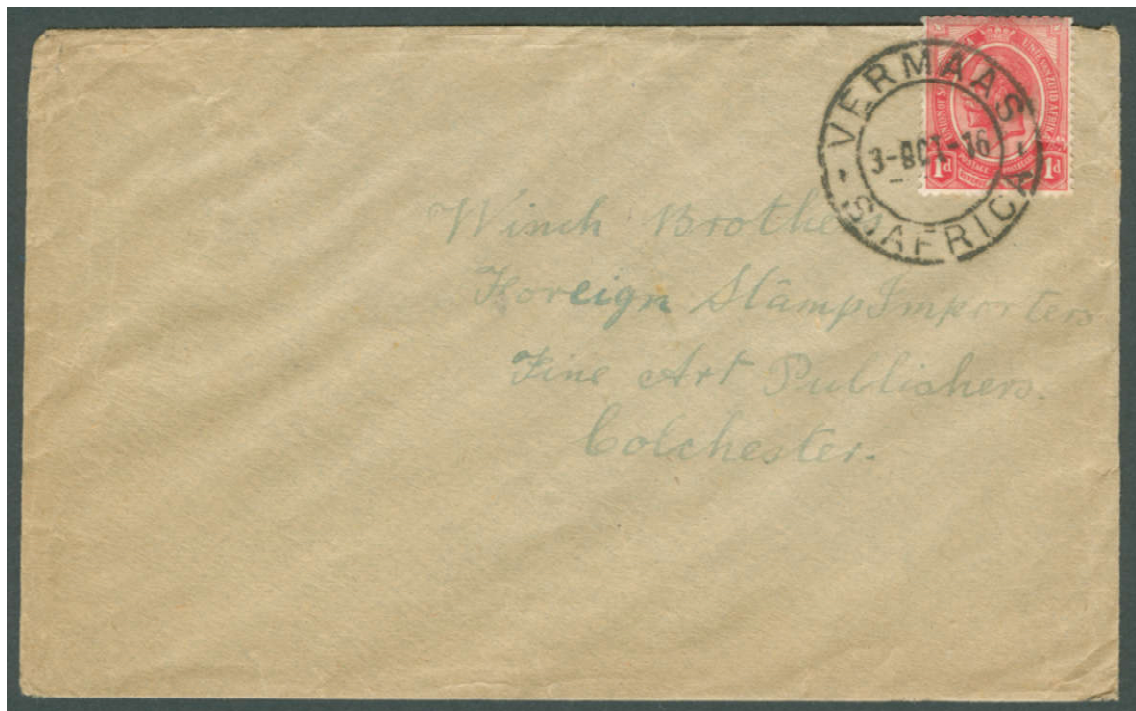
1916. Cover. 1d red MC cancelled CAPE TOWN KAAPSTAD 'DE 13 1916' to CANADA.

This cover has been sent at a 1d rate cancelled by a bilingual Six Bar MC.

This suggests that there were different North American rates - Canada (1d) and the USA (3d),

The cover to Canada above bears no censor marks or labels.

Perhaps censorship was not applied to mail going to Commonwealth countries?



1916. Letter. 1d red cancelled VERMAAS S. AFRICA '3 OCT 16' ' to ENGLAND.

According to Putzel, this PO opened in 1912, suggesting that this datestamp, his No. 1, was issued at that time.

This SA Type 1 datestamp is a Union issue celebrating 'South Africa' which did not exist before 1910.



1917. Cover. 1d red pair and 1/2d green MC cancelled DURBAN 'JUL 12 1917' to SWEDEN. Cancelled with Durban5 Bar MC and sent at the 2 1/2d European rate. Blue Passed Censor C. 11 cachet. This cover originated with the Royal Swedish Vice-Consulate Durban. (Arms ex- reverse inset.)



1917. Cover. 2 1/2d blue pair MC cancelled CAPE TOWN 'JUL 21 1917' to SWEDEN. This cover has been sent at a 5d rate ie. it is over 1/2 oz. It has a Blue Passed Censor C. 11 cachet. This cover originated with the Royal Swedish Vice-Consulate Cape Town. (Arms ex- reverse inset.)

See Horizontal Image
on Next Page



Robert Hill

1917. Piece. 1d red cancelled
LADYSMITH
SOUTH AFRICA
NATAL
'24 AUG 17'.

This Type 2 'South Africa' postmark has 'NATAL' at its base to ensure that it is not confused with the similarly named 'LADISMITH CAPE'.

1917. Cover. 1d red cancelled
CLAREMONT-CAPE '5 OCT 17'
to PRETORIA '8 OCT 17'.

Pencil manuscript "over ½ oz"
Blue crayon "T2". Large '2d' Postage Due
and Boxed bi-lingual "MORE TO PAY /
OVER ½ OZ" in black ink.

Tax paid by 2d Black and Violet Postage
Due stamp cancelled
UNION BUILDINGS UNIE-GEBOUW
PRETORIA '8 OCT 17'.

Putzel shows two CLAREMONT CAPE
datestamps, Nos. 9 and 10.

The example shown here is No. 10 with
hyphen between CLAREMONT and CAPE.

The Union Buildings were completed in
1913. Presumably, its first datestamp is from
this time. The UNION BUILDINGS UNIE-
GEBOUW PRETORIA datestamp is
probably the first example of a Union of
South Africa bilingual datestamp. It quite
possibly predates the Type B Zuid Afrika
datestamp which Robert Hill believes may
be South Africa's first bilingual datestamp.

**Image Reduced and Rotated
See Previous**



1917. Cover. 1d red cancelled CLAREMONT-CAPE '5 OCT 17' to PRETORIA '8 OCT 17'.

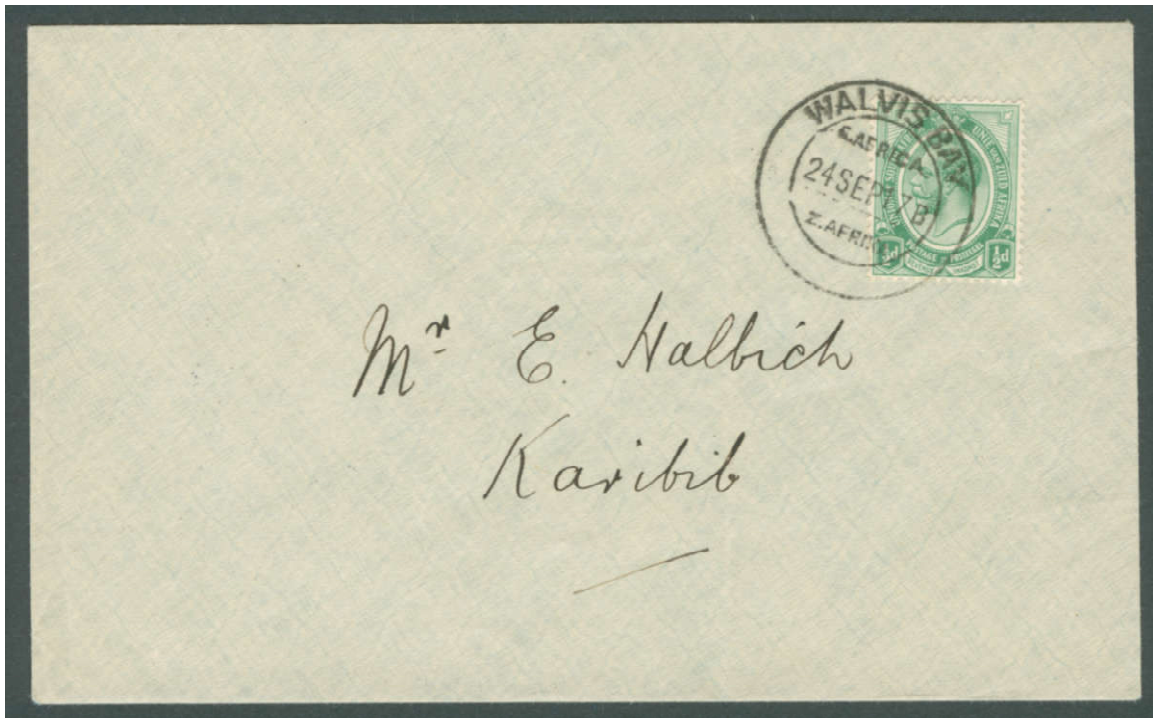
Pencil manuscript "over ½ oz"

Blue crayon "T2". Large '2d' Postage Due and Boxed bi-lingual "MORE TO PAY / OVER ½ OZ" in black ink.

Tax paid by 2d Black and Violet Postage Due stamp cancelled
UNION BUILDINGS UNIE-GEBOUW PRETORIA '8 OCT 17'.

Putzel shows two CLAREMONT CAPE datestamps, Nos. 9 and 10.
The example shown here is No. 10 with hyphen between CLAREMONT and CAPE.

The Union Buildings were completed in 1913. Presumably, its first datestamp is from this time. The UNION BUILDINGS UNIE-GEBOUW PRETORIA datestamp is probably the first example of a Union of South Africa bilingual datestamp. It quite possibly predates the Type B Zuid Afrika datestamp which Robert Hill believes may be South Africa's first bilingual datestamp.



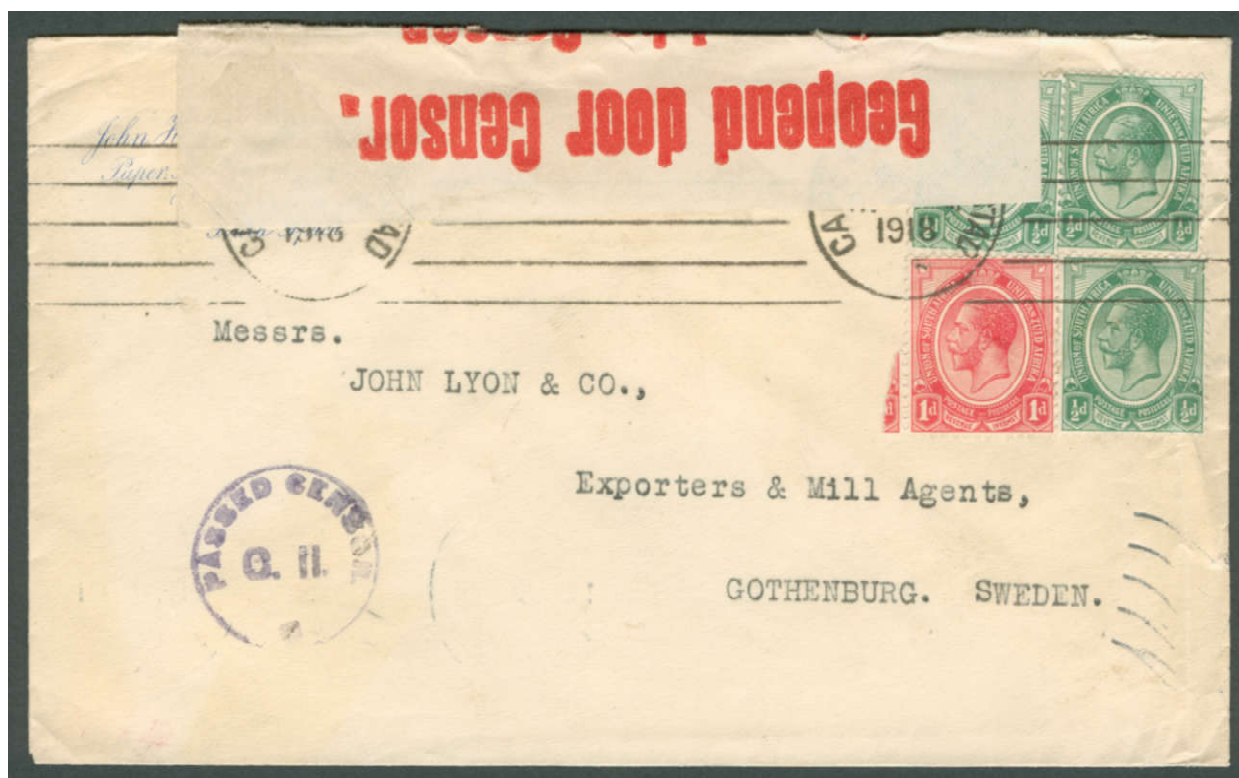
Robert Hill

1917. Cover. Single ½d green cancelled WALVIS BAY '24 SEP 17' to KARIBIB.
 Cancelled with the SA Type 3 postmark which is typically is clear at the base.
 (At this time, the enclave of Walvis Bay was a part of the Cape Province, South Africa.)



1917. Cover. Pair + 1 x 1d (3d) cancelled LONG HOPE RAIL '31 DEC 17' to USA. PC 18/99.
 This 'clear at the base SA Type 2 postmark is one of several varieties of this datestamp.

Longhope Rail post office had its Head Office at Somerset East and or Cookhouse. As a railway station on the line from East London to Bloemfontein and beyond, this letter was presumably posted by a passenger, a cattle farmer, in transit on the train when it stopped at Longhope Rail. Note that unlike mail to Canada or the UK, mail to the USA was inspected by the Censor, in this case PC 18/99 in blue ink.



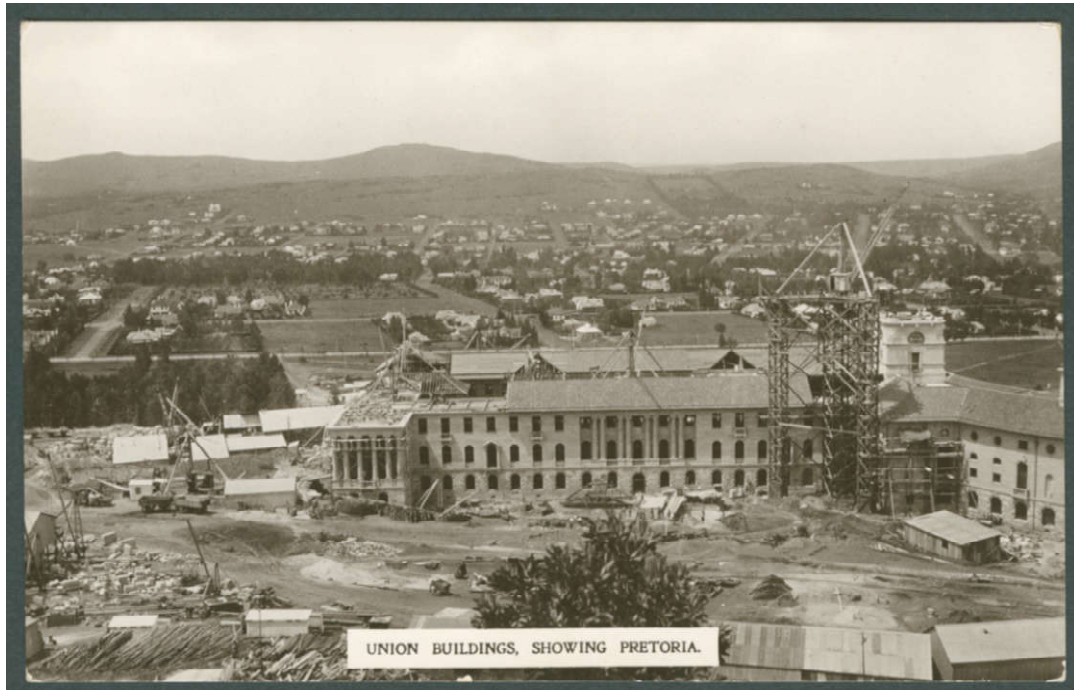
1918. Cover. 1d red and 3 x 1/2d green (2 1/2d) MC cancelled CAPE TOWN 'JAN 15 1918' to SWEDEN.
 This cover has been sent at a 2 1/2d rate cancelled with Cape Town / Kaapstad's Wide 5 Bar MC.
 Censored with Passed Censor C. 11 cachet in blue / black ink and sealed with OBC label 99.



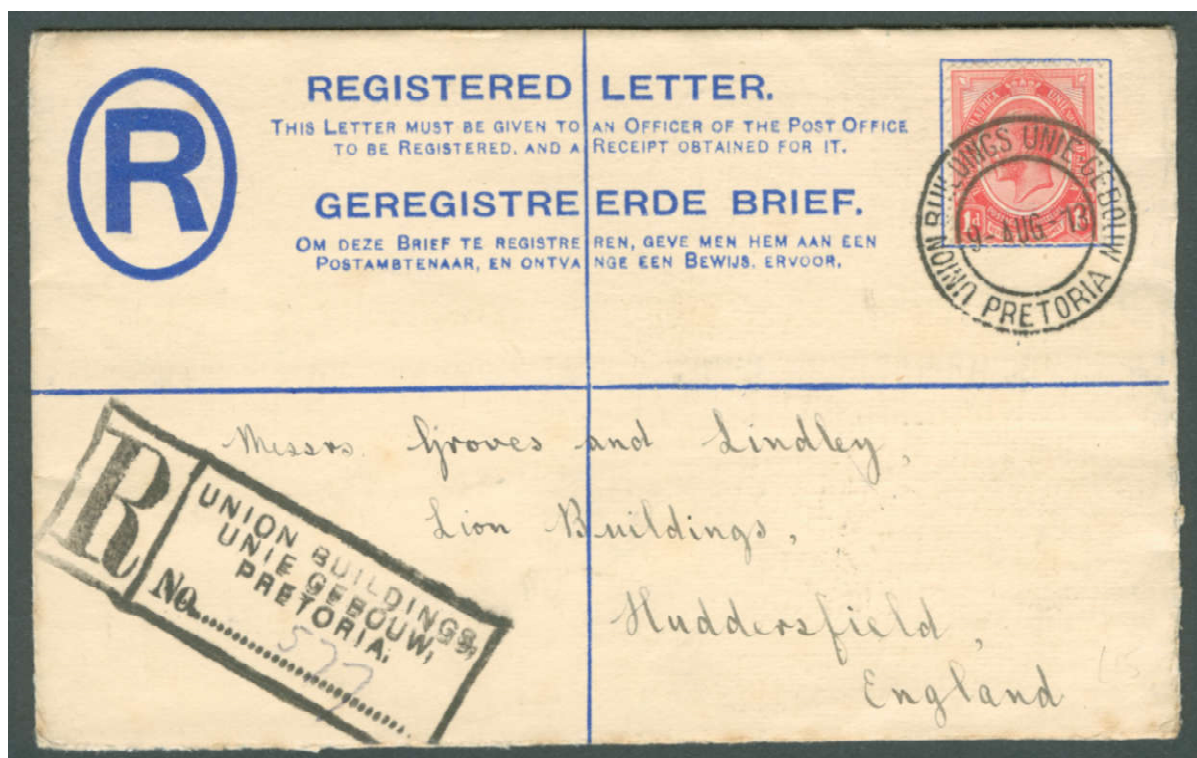
1918. Piece. 1/2d green + 2d purple (2 1/2d) CERES '5 JUL 18' to SWITZERLAND. PC C14.
 The rate to Europe is 2 1/2d. Despite Switzerland being neutral, SA mail to it was censored.
 Censored with Passed Censor C. 14 cachet in blue ink and sealed with OBC label 99.

Ceres Curved Bar Double Circle Datestamp: 1918

These datestamps were first issued in the Cape Colony but are widely associated with the early Union era. It is quite possible that after Union the new South African Post Office adopted the design. Putzel shows over ten different examples of this and similar double circle datestamps for CERES. This is No. 9a "with small time code letter" and longer bars than the datestamp on Page 1.



Circa 1912. Union Building, Pretoria. Construction started in 1910 and was completed in 1913.



1918. Registered Letter cancelled UNION BUILDINGS PRETORIA '9 AUG 18' to ENGLAND.

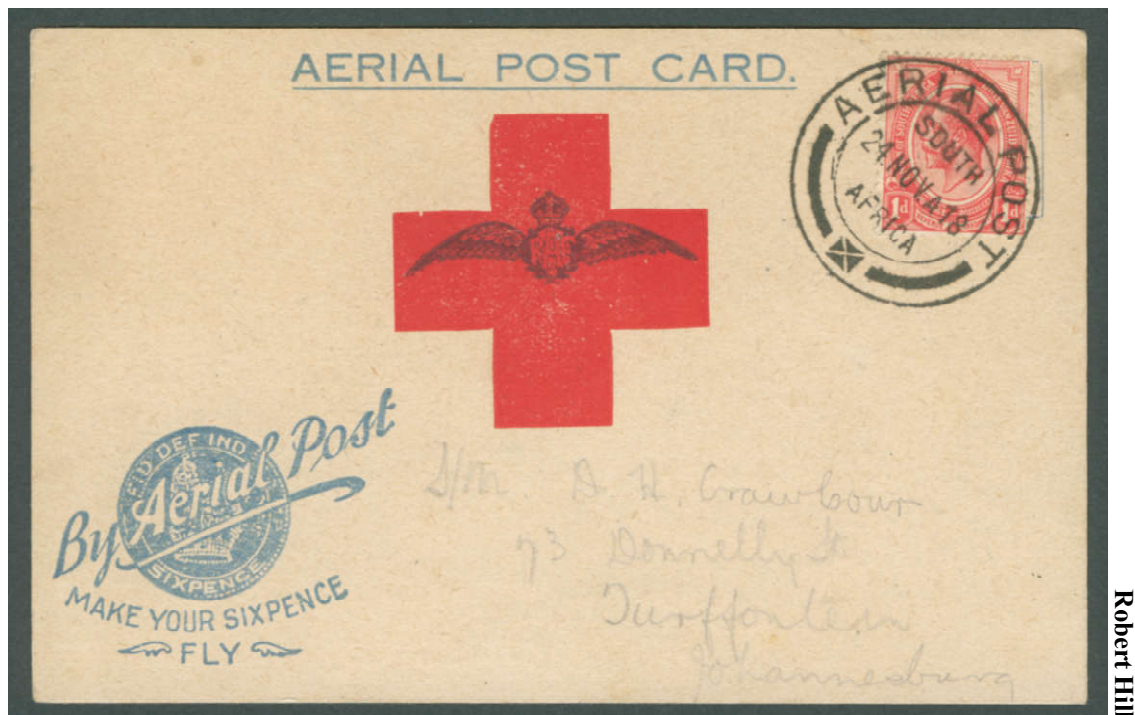
The rate paid is 4d for the Registered letter + 1 for postage, a total of 5d.

The date appears to show the year as '1913' but the receiving datestamp on reverse shows '1918'.

Union in 1910 gave South Africa two official languages, English and Dutch. This datestamp from 1918 shows 'UNION BUILDINGS UNIE GEBOUW PRETORIA'. This and the 'CAPE TOWN KAAPSTAD' datestamps show that there was an early attempt to create bilingual English / Dutch datestamps. When Afrikaans replaced Dutch as official language of South Africa in 1925, the Post Office was required to provide communications in both official languages. This led to a need for bilingual English / Afrikaans datestamps, like 'EAST LONDON OOS LONDEN, SOMERSET EAST / OOS', etc. etc.

USE OF KING'S HEAD STAMPS AFTER WW1: 1918 - 1927

Armistice was declared 11th November 1918, effectively ending WW1.



Robert Hill

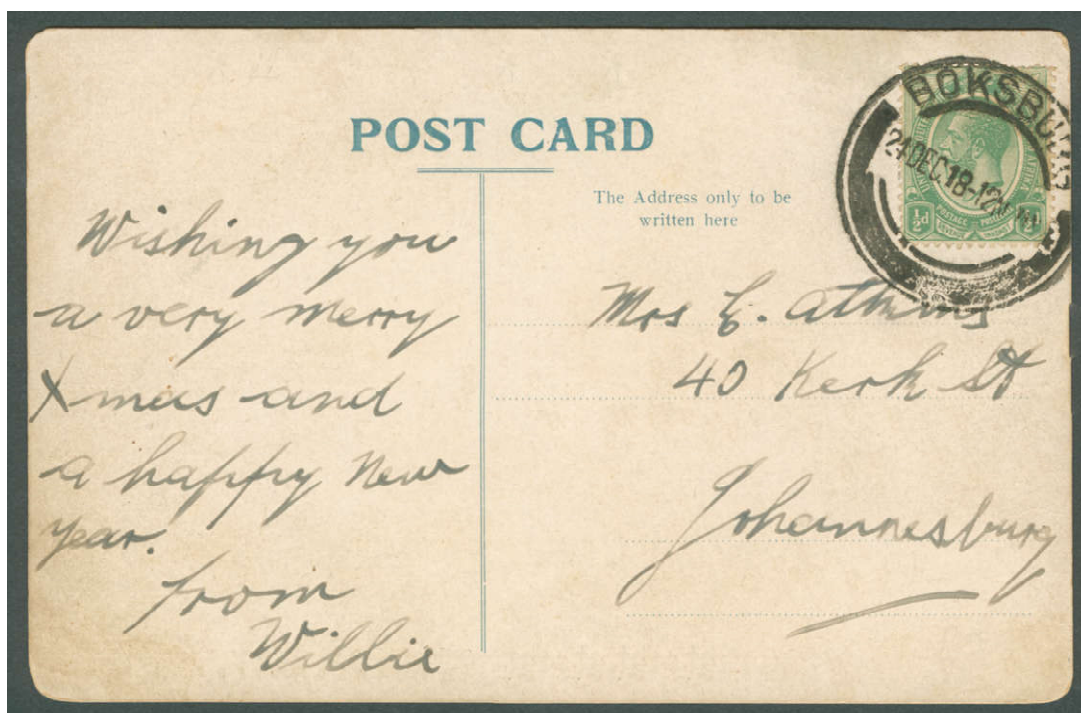
1918. Post Card. 'By Aerial Post - Make Your Sixpence Fly'. Germiston flight card. 1d red affixed cancelled AERIAL POST SOUTH AFRICA '24 NOV 18' to Turfontein. The postmark is a SA Type 2. The Post Card is the "Transvaal Small Wing" type.

These cleverly titled Post Cards were part of a drive to raise funds for the Red Cross who were deeply involved in the humanitarian side of the vast military tragedy that was the First World War. The war had ended two weeks before this post card was flown but the suffering and the need for funding remained. The novelty and excitement of flight made these post cards a popular way to donate money to a worthy cause.

Because they are highly collectable their prices often appear unrealistic to ordinary collectors.

Costing a sixpence to buy, the post card promised the uniqueness of having been flown, something that in 1918 was still a great wonder and mystery to most people. Sixpence, the cost of the post card, went to the organisers and or the Red Cross. Postage stamps as an extra cost still had to be applied in order to ensure delivery by the Post Office, either an extra halfpenny adhesive for local post or a penny one to Great Britain. The flight itself was a short hop with its little purpose other than to raise funds for the Red Cross. A more efficient delivery of the mail was not its primary aim. Having been flown, it was collected by the Post Office and delivered in the normal way. As an item of mail, this Aerial Post likely suffered delays from all the pre-flight faffing around. It was gimmick in aid of a good cause.

Despite its debatable claim to be 'Aerial Post', this is a bona fide postmark used to cancel postage stamps issued by the Post Office on post cards that it delivered. This postcard shows a very nice 'SOUTH AFRICA' Type A postmark cancelling a 1d red King's Head postage stamp. Clearly created with the help of the Post Office, an arm of the South African Government, this postmark merges the positive and expansive ideals of flight with a new found confidence in the future of a widening White South Africa.



1918. Post Card. ½d green cancelled BOKSBURG '24 DEC 18' to JOHANNESBURG.

Little is known about this wonderful postmark. It has always intrigued me.

This display includes several of this type of datestamp.

In Volume 1 of his *'The Postmarks of South Africa....'* Ralph Putzel begins by showing a broad sampling of historic postmarks up to the modern day. The postmark above is not included in his overview. In my view, this is an omission. However, he does show an example of this Boksburg datestamp, (his No. 12), in the same volume. He also lists the other postmarks like this which are included in this display:

Pietetersburg (No. 17, dated 25 MAR 20),
Port Elizabeth (No. 31 dated '9 JUL 25'),
Queenstown (No. 28, dated '12 NOV 19').

These dates suggest that the King's Heads era was the heyday of this canceller.

CAN YOU HELP?

Readers are kindly asked to submit any examples they have of this datestamp cancelling a King's Head stamp and covers for inclusion in this display, please.



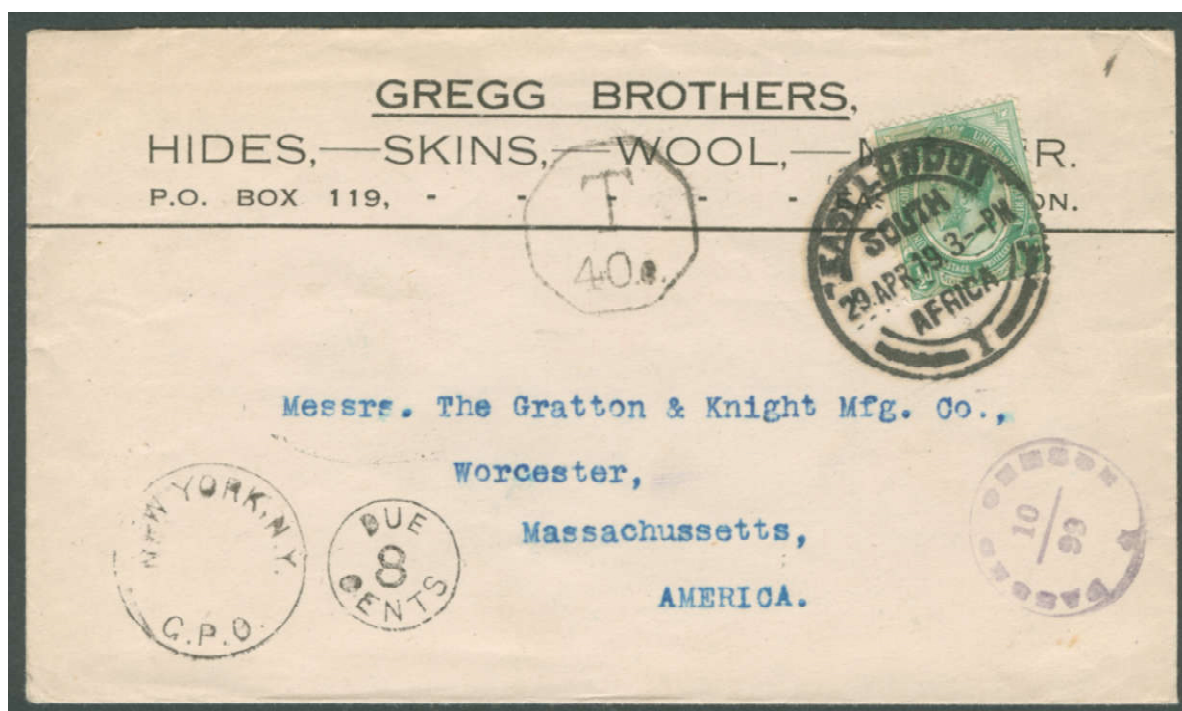
1919. Cover. 1/2d green & pair 1d reds (2 1/2d) MC cancelled JOHANNESBURG 'MAR 8 1919' to SWITZERLAND.

Late use of PC 21/2. The cover has been Opened by Censor and sealed by OBC label 21.

The rate paid for postage to Switzerland is 2 1/2d

This cover shows that censorship did not end with the Armistice but was still in place.

This narrow 8 bar MC is the same one used earlier in 1913.

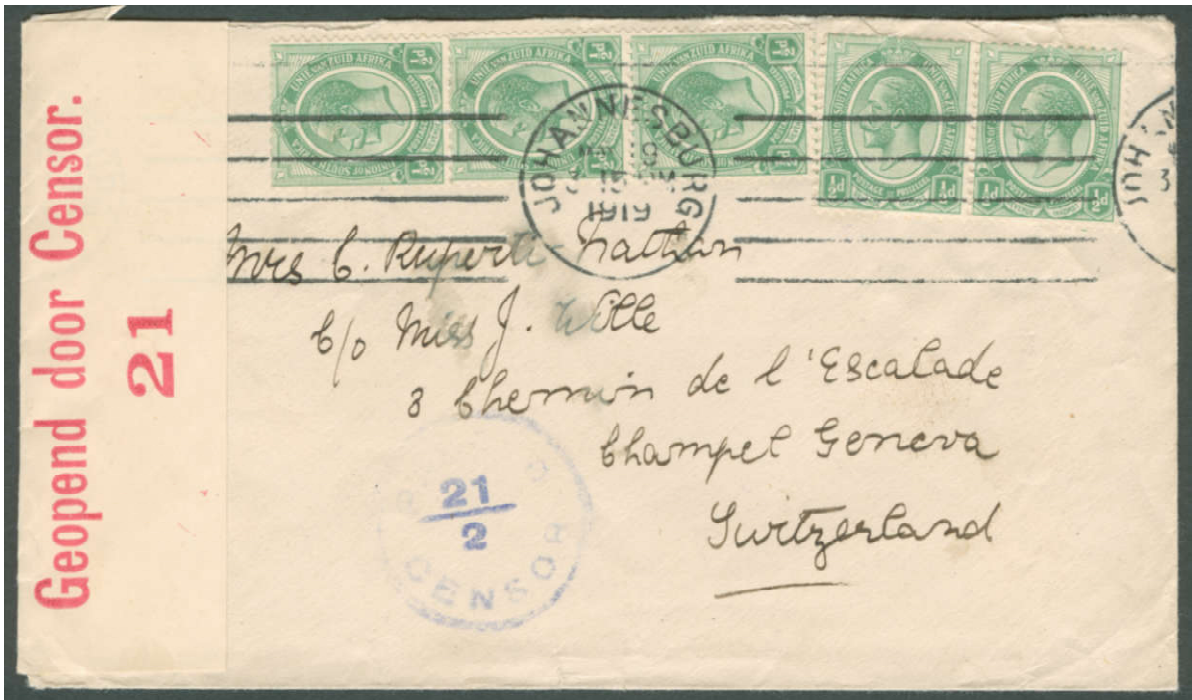


1919. Cover. 1/2d green cancelled EASTLONDON 1 SOUTH AFRICA '29 APR 19' to USA.

Late use of PC 10/99. The letter is 2d short of the correct 2 1/2d rate. Octagonal Tax 'T 40c' stamp.

This cover shows that censorship did not end with the Armistice but was still in place 5 months later.

This SA Type 2 postmark variety includes curved bars with the numeral 1 between bars at the base.



1919. Cover. 5 x ½d green (2½d) MC cancelled JOHANNESBURG 'MAY 9 1919' to SWITZERLAND.

The European rate paid for postage to Switzerland is 2½d

Late use of PC 21/2. The cover has been Opened by Censor and sealed by OBC label 21.

This cover shows that censorship did not end with the Armistice but was still in place 6 months later. This five bar MC is different to the previously shown Johannesburg example. Here 'South Africa' is omitted.



1919. Piece. Registered. 6d black & violet & 3d black & orange (9d) cancelled VRIJHEID '7 JUN 19' to USA.

Late use of PC 21/14 on OBC 21 label. A rate of 9d gave 4d for Registration and 5d (over 1 oz) for postage.

This cover shows that censorship did not end with the Armistice but was still in place 7 months later.

This postmark is Putzel No. 19 with "Date with time of day. Small letter" (as to opposed No. 20 with large 'J').

With no Passed Censor cachets seen on mail after mid-1919, it appears that wartime censorship only ended with the signing of the peace Treaty of Versailles on 28th June 1919. Hugh Amooore concurs on the basis of internee mail from Fort Napier seen censored up to June 1919, the formal end of WW1.



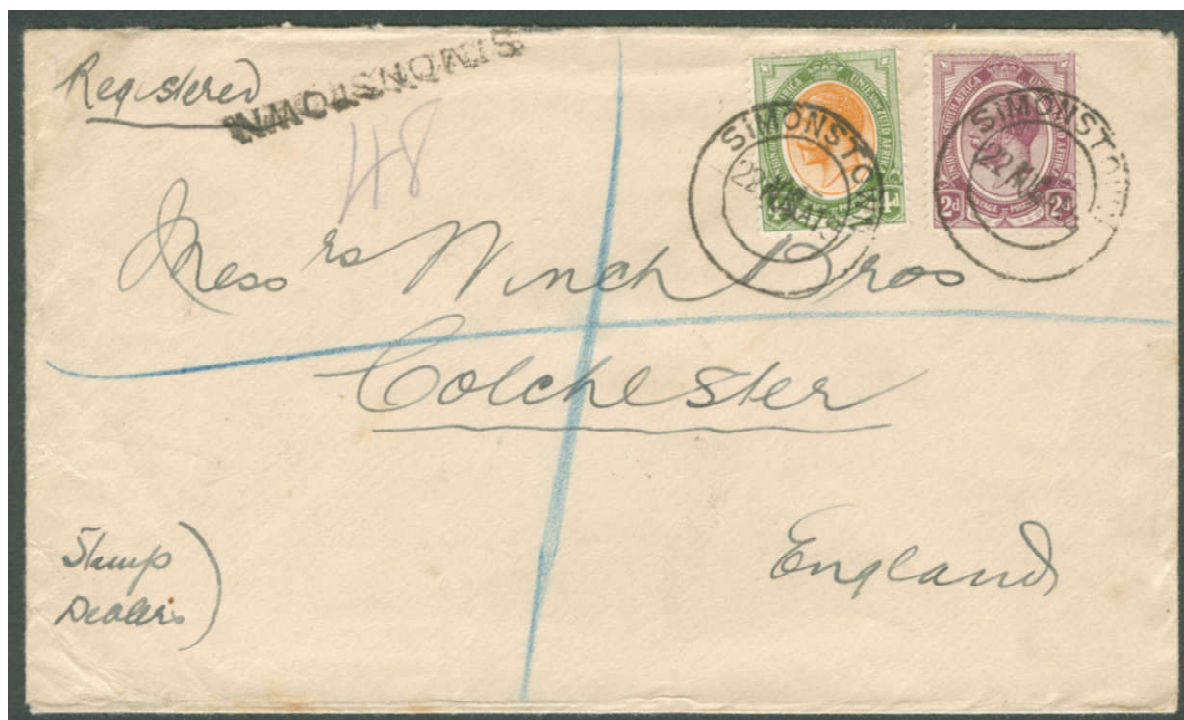
1919. Piece. Registered. 4d orange & sage-green + 3 x 2½d blue (min 9d, possibly 11½d).

Cancelled POST OFFICE JAGERSFONTEIN '8 JULY 19' to USA.

A rate of 9d gave 4d for Registration and 5d (over ½ oz) or 7½d (over one oz) for postage.

This postmark is Putzel No. 7 with 'ORC removed' and 'Full date with time code letter'.

With 'ORC' at base, this postmark was previously Putzel No. 5.



1919. Registered Letter. 4d orange & sage-green & 2 d purple (6d)

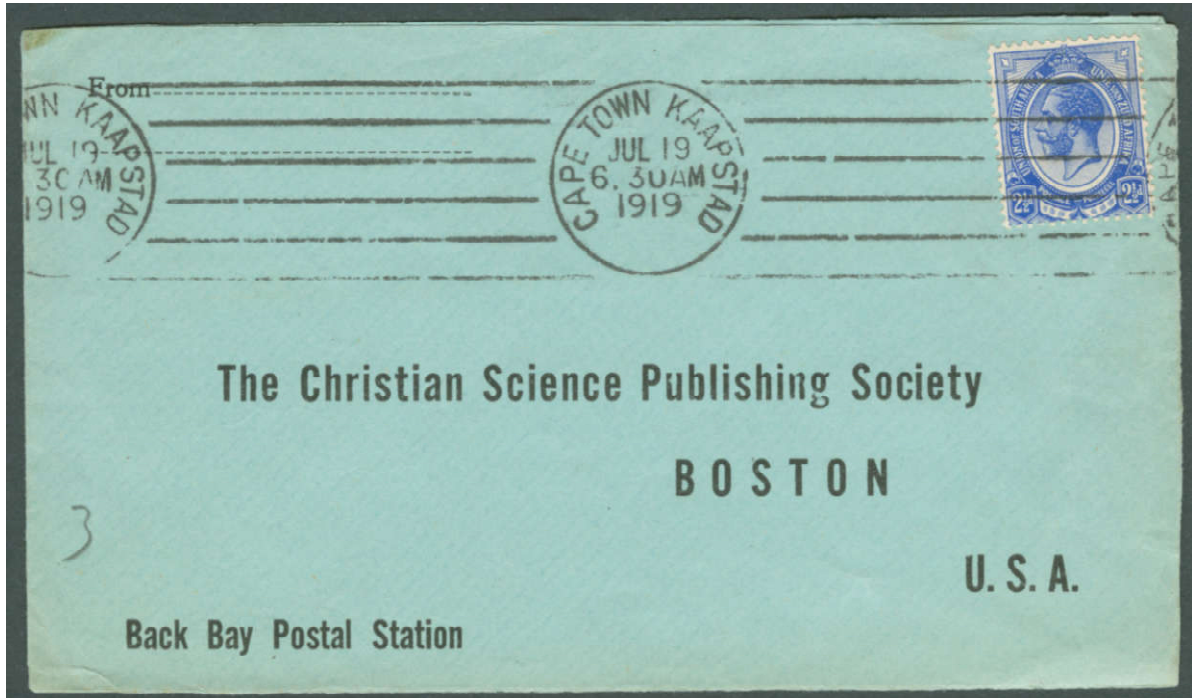
cancelled SIMONSTOWN '22 AUG 19' to ENGLAND.

The rate paid for this Registered Letter to GB is 6d, 4d for Registration and 2d for mail (over ½ oz).

Of interest is the curious inverted SIMONSTOWN Registered town name in black ink.

This appears to have come from the Telegraph Office where it was used on telegrams.

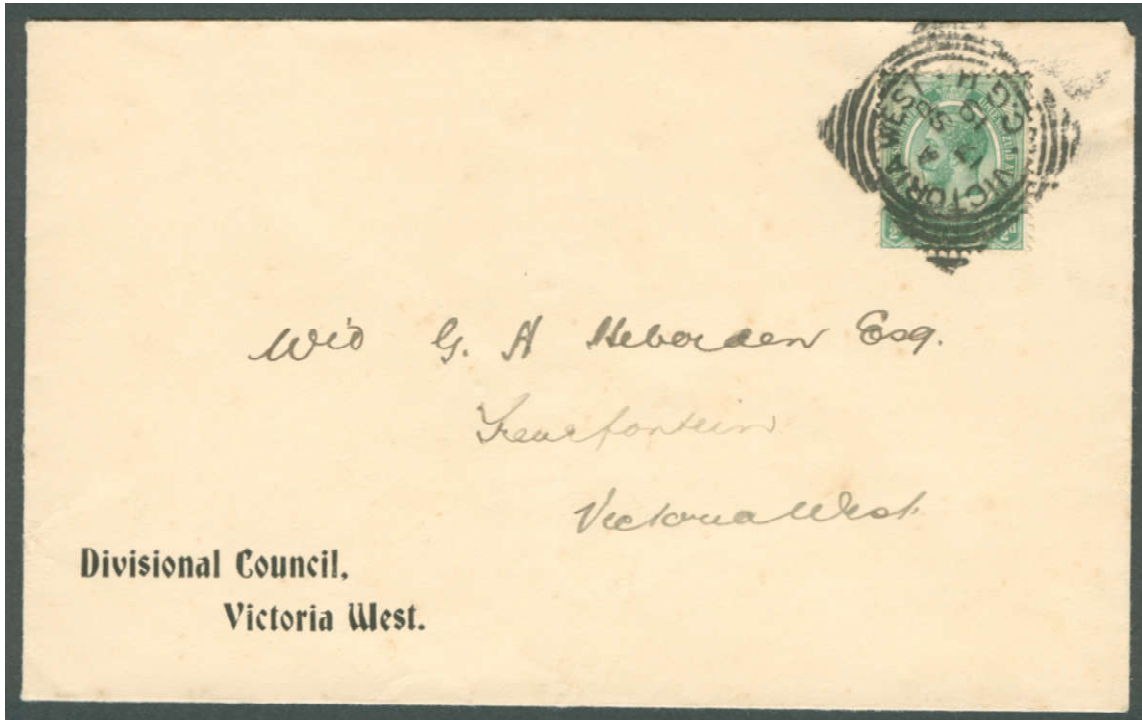
The two covers below, posted within a week of each other show that the postage rate to the USA was 2½d for letters under a half ounce. The cover immediately below was under ½ ounces while the one at the foot of the sheet was under 1½ ounces, therefore needing three 2½d stamps, a total of 7½d.



1919. Reply Cover. 2½d blue MC cancelled CAPE TOWN KAAPSTAD 'JUL 19 1919' to USA.
This is the standard letter rate to the USA for letters under ½ ounces (1 x 2½d).
This cover has been cancelled with Cape Town / Kaapstad's 6 Bar MC.

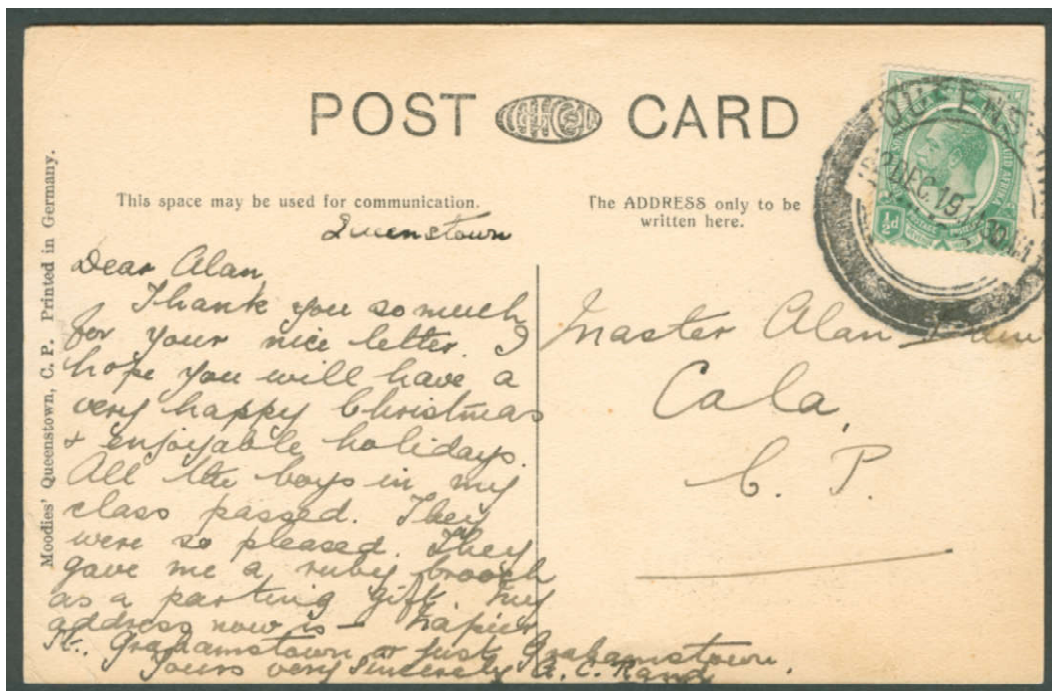


1919. Cover. 3 x 2½d blue cancelled PORTELIZABETH '21 JUL 19' to USA.
This is the standard rate to the USA for letters under 1½ ounces (3 x 2½d or 7½d).



1919. Cover. ½d green cancelled VICTORIA WEST CGH '17 SP 19'. Local post.

This late use of the Cape Colony VICTORIA WEST CGH Squared Circle datestamp above is not even close to the last recorded date of use, believed to be some time in 1925. The reverse of the Victoria West to Houw Hoek cover shown later uses this same VICTORIA WEST CGH Squared Circle datestamp as a receiver to date an Attorney's undelivered and returned Registered letter '1 AP 25'.



1919. Post Card. ½d green affixed and cancelled QUEENSTOWN '22 DEC 19' to CALA.

A ½d is the rate for postcards posted domestically within South Africa
 Little is known about this wonderful postmark. This display includes three of the same type.
 See the Port Elizabeth datestamp at the foot of the preceding page.

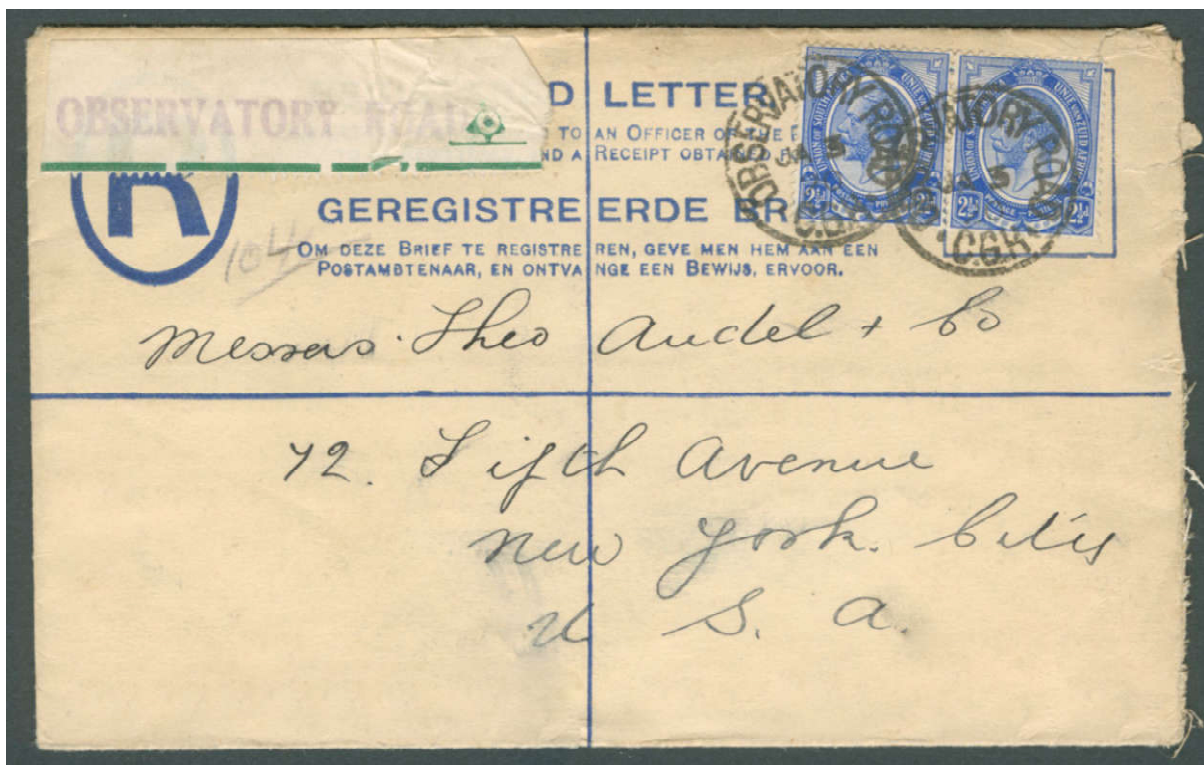


1920. Pre-addressed Cover. Pair 1d red & 1/2d green (2 1/2d) cancelled GREYTON '21 JAN 20' to USA.

The postage rate to the USA for letters is 2 1/2d per half oz or part thereof.

According to Putzel, this postmark is No. 8 'with "SOUTHAFRICA" removed'.

Montgomery Ward was a huge and highly successful catalogue-based, American dry-goods retailer.



1920. Registered Letter with 2 1/2d blue pair cancelled OBSERVATORY ROAD CGH 'JA 3 20' to USA.

The rate is calculated as 9d - 4d for the Registered Letter & 2 x 2 1/2d (5d) for a letter under 1 oz to the USA.

A piece of selvage from a sheet of probably 1/2d stamps is affixed to the top left of the letter.

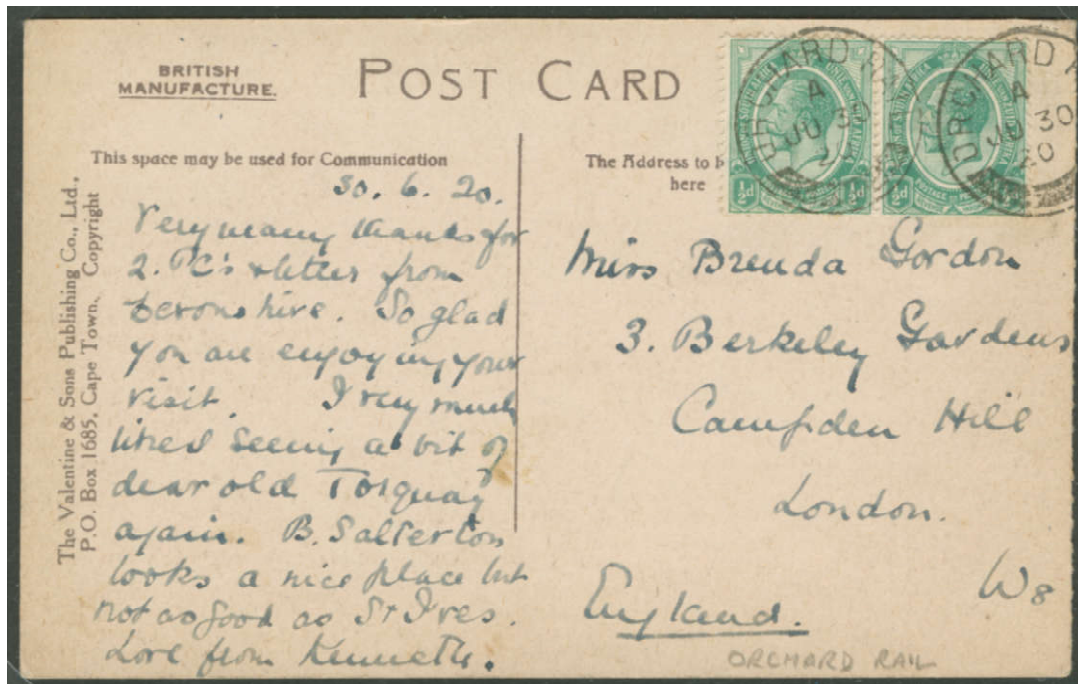
This has been struck with the faint OBSERVATORY ROAD Registered cachet.



1920. Post Card. 1d red cancelled DE AAR SOUTH AFRICA '17 JUN 20' to GB.

The rate is 1d for a postcard to GB.

This SA Type 2 postmark is the most common variety - clear at the base.



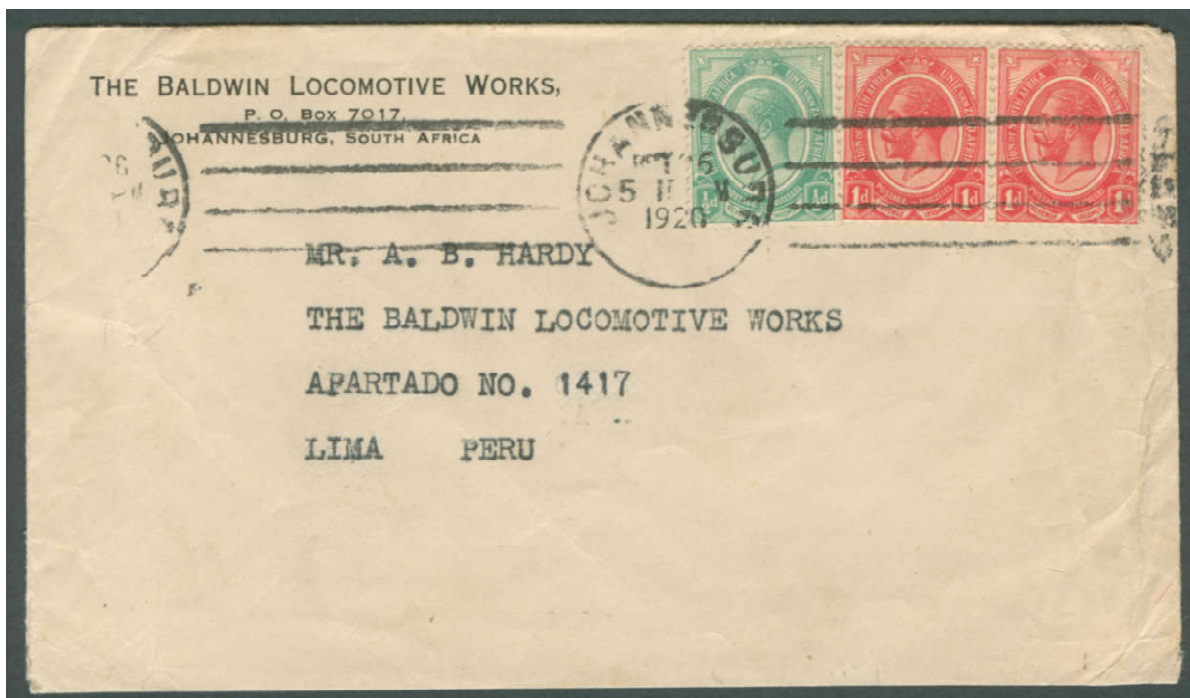
1920. Post Card. 2 x 1/2d green ORCHARD RAIL 'JU 30 20' to GB

The standard rate for a postcard to England is 1d.

Cancelled with Orchard Rail's Double Circle datestamp with a solid bar (no cross) around the base.

RATE CHANGE - 10th MAY 1920

“The 1920 rate change for a domestic letter, (increased from 1d to 1½d), was for the increased first step weight from ½ oz to 1 oz. The GB & Empire rate was increased to 1½d per oz. This 1½d rate lasted just over a year when it was set at 2d oz on 1st June 1921. The foreign (UPU) letter rate was increased from 2½d per ½ oz to 3d for the 1st oz and 1½d per additional oz (or part thereof) on 1 January 1922 . This remained in force until 31st March 1950!” (Hugh Amooore.)

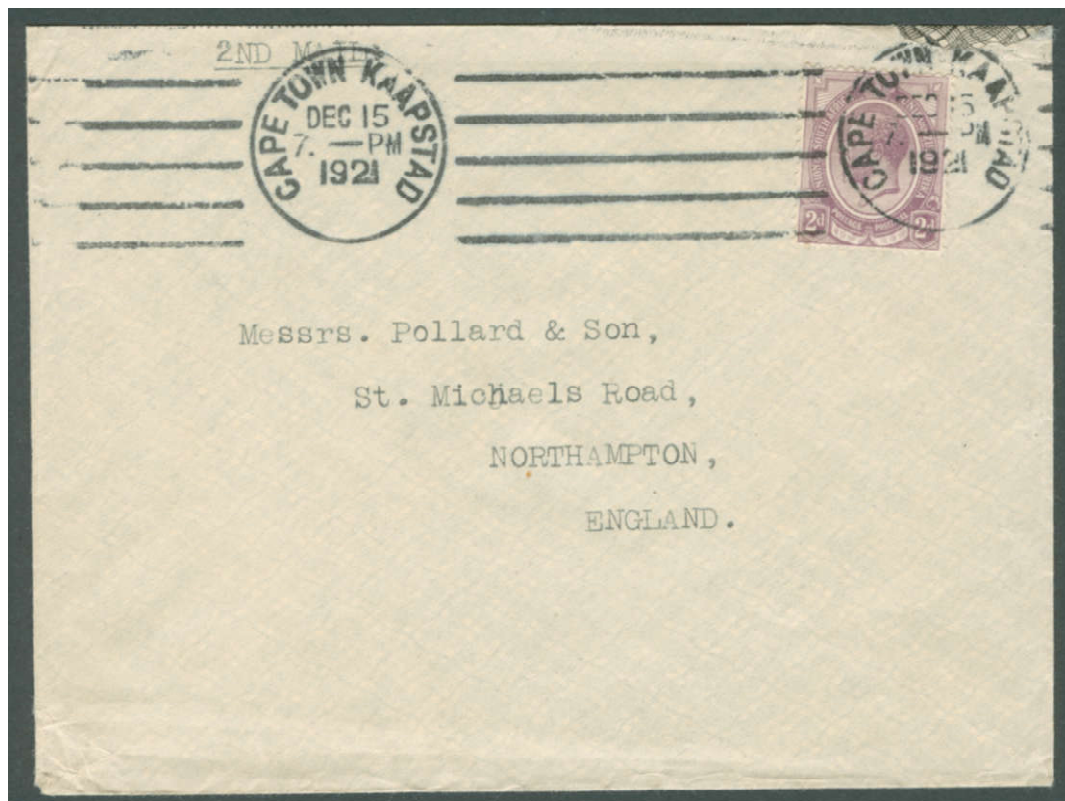


1920. Cover. ½d green & pair 1d red MC cancelled JOHANNESBURG 'OCT 26 1920' to PERU.

The rate paid for this letter to Peru is 2½d.

It appears that in 1920 the postage rate to South America is the same as to North America.

The stamps have been cancelled with the Johannesburg MC 4 Bar canceller.



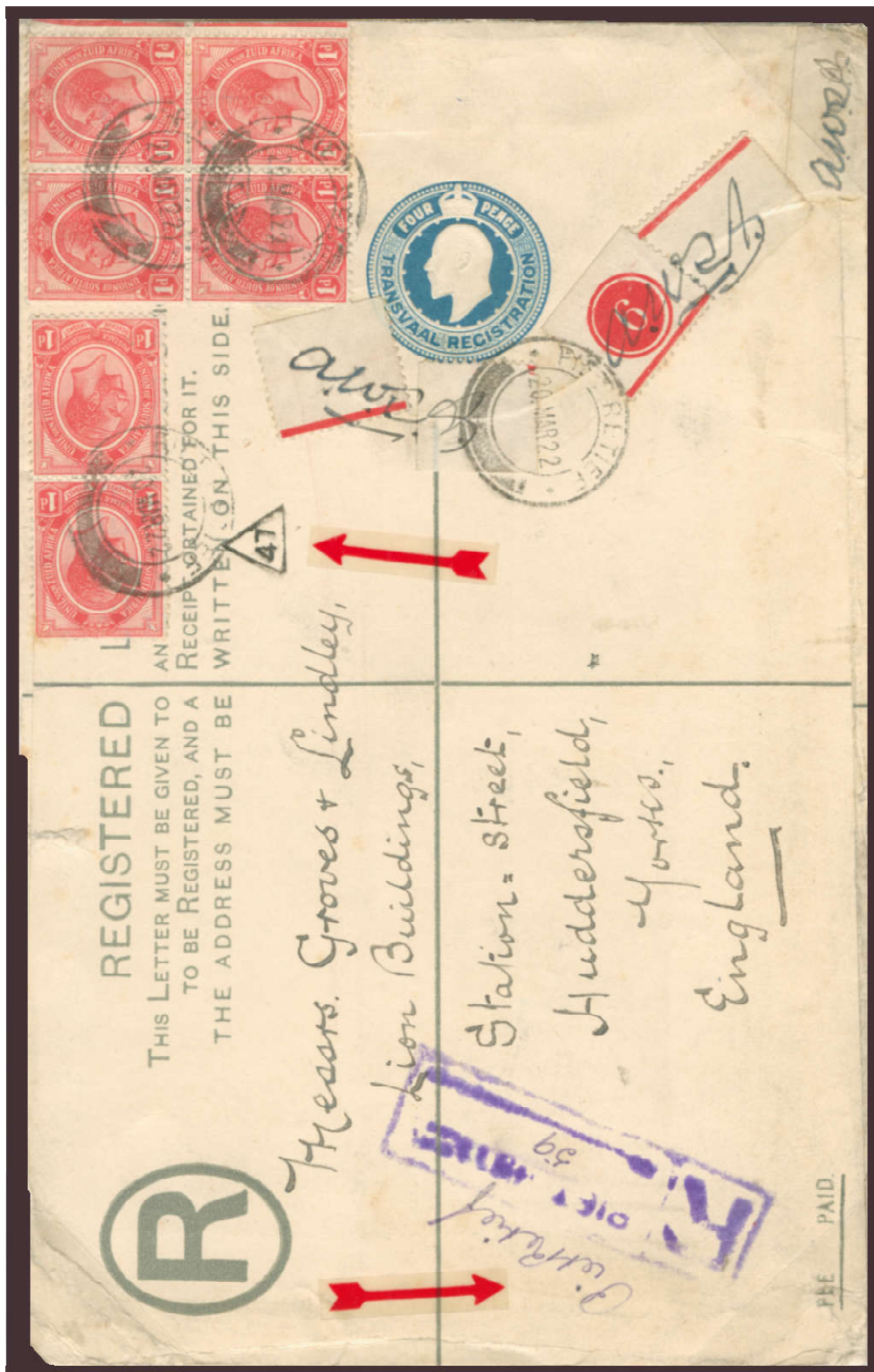
1921. Cover. 2d purple MC cancelled CAPE TOWN KAAPSTAD 'DE 15 1921' to CANADA.

The rate paid for this letter to England is 2d.

The letter rate to England is 1d or the letter weighed more than a ½ oz but less than 1oz.

The 2d purple has been cancelled with the Cape Town Kaapstad MC 5 Bar canceller.

See Horizontal Image on Next Page



Robert Hill

1922. Registered Letter (4d) + 6 x 1d reds cancelled PIET RETIEF '20 MAR 22' to GB.

The rate paid for this Registered Letter to GB is 10d - 4d for Registration and 6d for mail at 1d per ½ oz or part thereof. Given that the Registered Letter cost 4d itself, the 6 x 1d red stamps are to cover the cost of postage, suggesting that the contents were just under 3oz at a rate of 1d per ½ oz at a rate of 1d.

The central red arrow points to a curious small 10mm triangular postmark that includes the numeral '47'. Also, note that bottom red arrow points to the the PIET RETIEF Registration cachet which was in such poor condition the name of the town had to be written in MS alongside it. Finally, the PIET RETIEF datestamp is a Double Circle with a solid bar (no cross) wrapping completely around the base.

Your advice on the small triangular postmark, please!

**Image Reduced and Rotated
See Previous**



Robert Hill

1922. Registered Letter (4d) + 6 x 1d reds cancelled PIET RETIEF '20 MAR 22' to GB.

The rate paid for this Registered Letter to GB is 10d - 4d for Registration and 6d for mail at 1d per ½ oz or part thereof. Given that the Registered Letter cost 4d itself, the 6 x 1d red stamps are to cover the cost of postage, suggesting that the contents were just under 3oz at a rate of 1d per ½ oz at a rate of 1d.

The central red arrow points to a curious small 10mm triangular postmark that includes the numeral '47'. Also, note that bottom red arrow points to the the PIET RETIEF Registration cachet which was in such poor condition the name of the town had to be written in MS alongside it. Finally, the PIET RETIEF datestamp is a Double Circle with a solid bar (no cross) wrapping completely around the base.

Your advice on the small triangular postmark, please!



1922. Letter Card. 1d red card cancelled TULBAGH '1 MAY 22' to SOMERSET WEST.

Indelible Pencil manuscript "To pay".

Large black 2d denoting amount to pay partially obscured by label, bottom tight.

Tax paid by 2 x 1d Red and Black Postage Due stamps cancelled SOMERSET WEST 'MY 22'".

Contrary to its instructions, this letter card possibly contained contents that were lost or stolen. Multiple 'Found open and officially closed in the Post Office' labels were added after payment of tax.

Labels datestamped SOMERSET WEST 'MY 22', same day as postage due.

This Tulbagh postmark is most probably a Cape Colony issue of 1900 - 1902.

The Double Circle Datestamp with Cross and Curved Bars

Double Circle datestamp with different lengths and thicknesses of curved bars to enclose a variety of crosses are widely found on King's Head stamps. With one exception, the Date (Day, Month, Time Code and Year) is on a single line. Those with the Date on 2 or 3 lines originated as Cape Colony datestamps. See Cala, Cape, below. This practical datestamp design was widely used in the Union of South Africa.



CALA 1914
(Cape - 3 line Date)



DORDRECHT 1914
(Single line Date)



MARAISBURG.TVL 1914



MUIZENBERG 1920

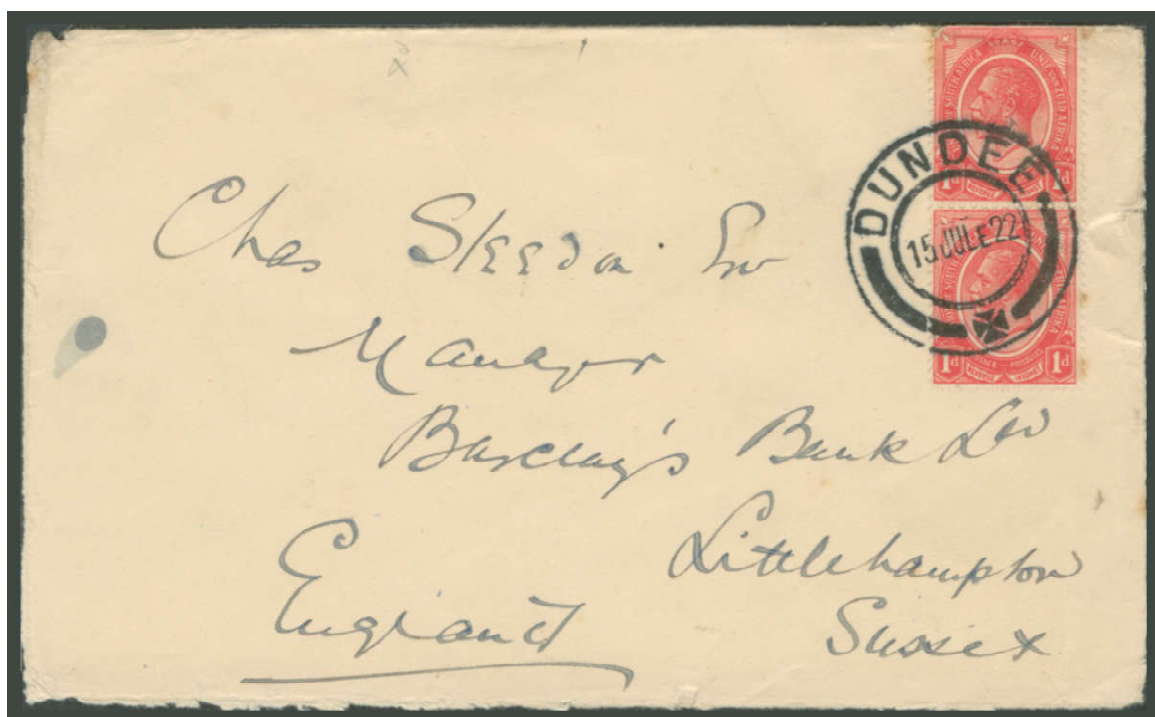


BARKLY WEST 1920

The stamps and pieces above
contributed by Robert Hill.



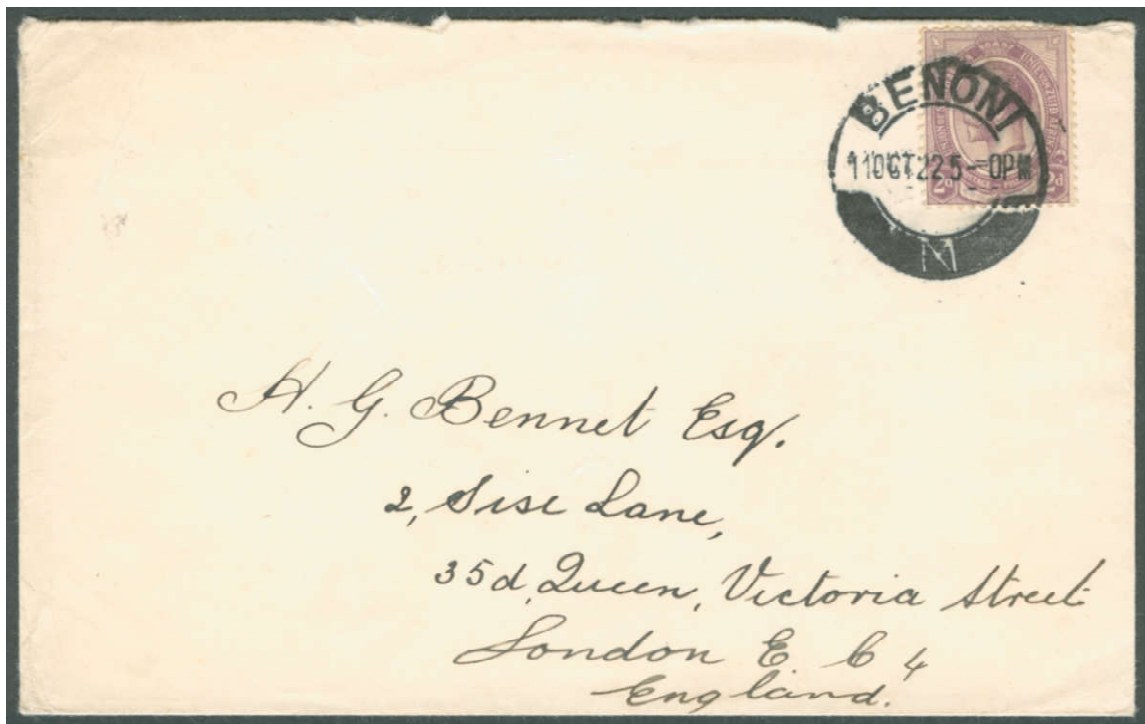
PARIS 1922



1922. Cover. Vertical pair 1d reds cancelled DUNDEE '15 JUL 22' to GB.

The rate paid for this letter to England is 2d.

A letter to England weighing under a ½ oz was 1d. This was presumably over ½ oz but less than 1 oz.



1922. Cover. 2d purple cancelled BENONI '11 OCT 22' to GB.

The rate paid for this letter to England is 2d.

A letter to England weighing under a ½ oz was 1d. This was presumably over ½ oz but less than 1 oz.



1924. Post Card. 1d red card uprated with ½d green.

Cancelled 1½d to BERLIN '19 MAR 24' to BERLIN, GERMANY.

The rate paid for this postcard to Germany is 1½d, the European post card rate.



1924. Registered letter cancelled SPRINGS TRANSVAAL '5 SEP 24' to MASERU SOUTH AFRICA '8 SEP 24'. The rate paid for this Registered Letter is 4d plus 2d for postage, presumably being over ½ oz. SA Type 2.

The Basutos had a long and proud tradition of defending themselves against interlopers, other black tribes, the Boers and the British. They had fought long and hard to maintain their independence and their land, especially in the area bordering the Orange Free State. They would have regarded this Union of South Africa SA Type 2 datestamp showing 'MASERU SOUTH AFRICA' with huge misgivings and trepidation.



1924. Postcard 2 x ½d green pairs cancelled PIETERSBURG '10 NOV 24' to PRETORIA. A note supplied with this covers states that "4 x ½d stamps pays the going postal rate at that time". Does that mean that the postal rate has changed from 1d to 2d or did this weigh more than ½ oz?

This postmark is similar to the earlier Port Elizabeth and Queenstown postmark about which more info is sought.

A POSTAL RATE CHANGE?

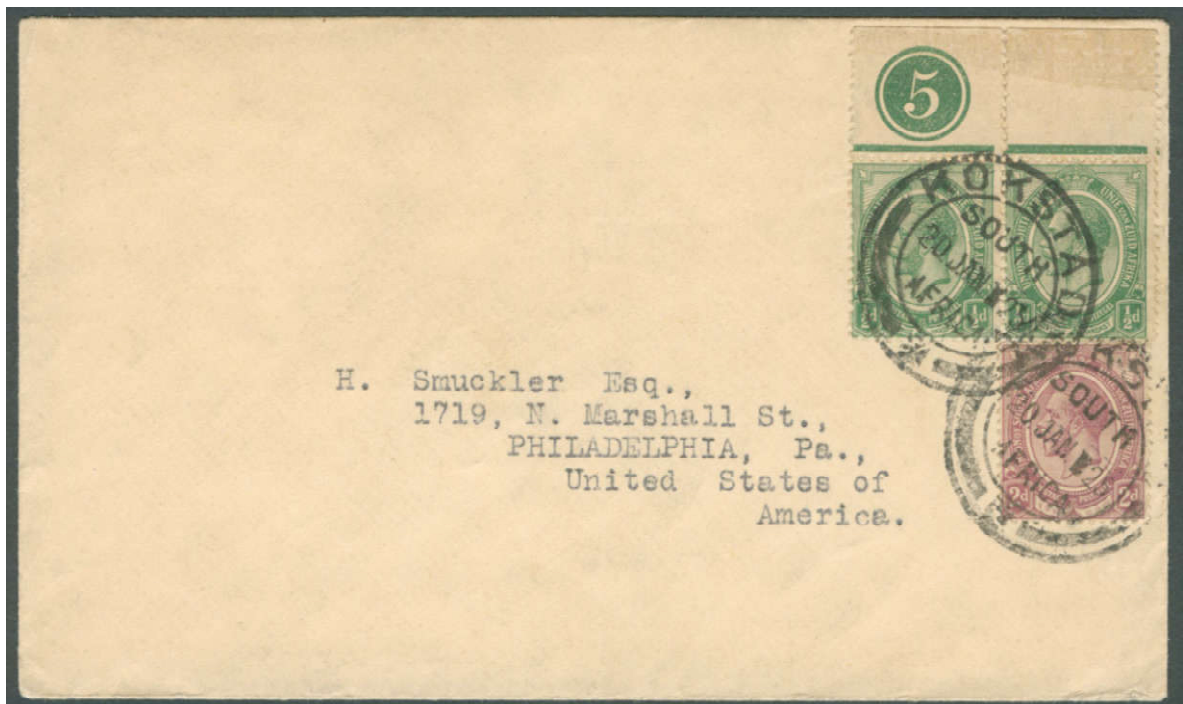


1925. Cover. 2 x 2d purple pair (4d) cancelled LANGEBAAN SOUTH AFRICA '14 JAN 25' to USA.

The rate paid for this letter to the USA is 4d. SA Type 1.

Has the postage rate to the USA changed and or has the sender paid too much above?

Given that the letter below paid 3d, has the sender above paid too much because he had no other stamps?



1925. Cover. 2 x ½d green pair +2d purple (3d) cancelled KOKSTAD SOUTH AFRICA '20 JAN 25' to USA.

The rate paid for this letter to the USA is 3d. SA Type 2.

This suggest that the rate to the USA has changed from the previous 2½d to 3d.



1925. Registered Letter. 6 x 1d red (6d) cancelled VICTORIA WEST '24 MAR 25' to HOUW HOEK.
Blue REGISTERED Victoria West cachet. NO HOUW HOEK receiving datestamp.

The rate paid for this Domestic Registered Letter is 6d.

The letter could not be delivered and was returned Registered from HOUW HOEK 'MR 30 25'.

Re-Registered 'Houw Hoek' with MS No. 123 in pencil and black ink 'R'.

Victoria West Registered cachet obliterated with blue pencil and re-addressed 'Victoria West' in MS.

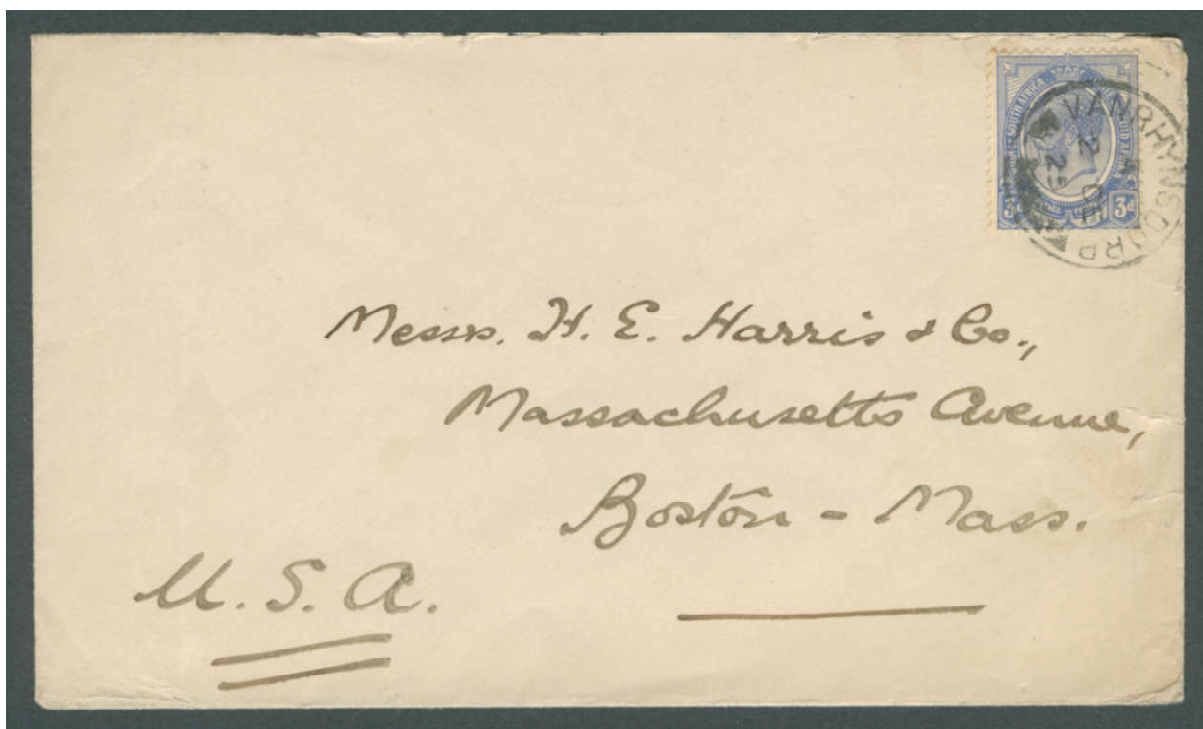
On its return it received very late use of 'the VICTORIA WEST CGH Squared Circle '1 APR 25' on reverse.



1925. Cover. 1d red + 2d purple (3d) cancelled HOWICK SOUTH AFRICA '14 MAY 25' to USA.

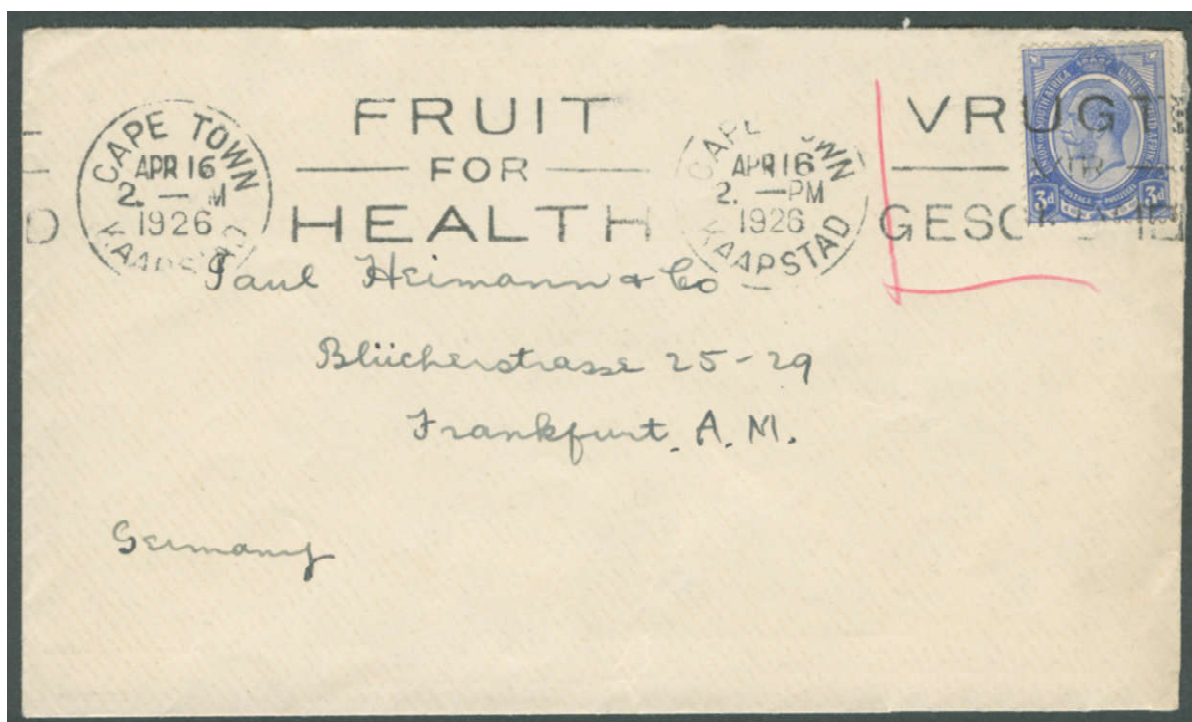
The rate paid for this letter to the USA is 3d. SA Type 2.

This seems to confirm that the postage rate to yhe USA has changed from 2½d to 3d.



1925. Cover. Single 3d blue cancelled VANRHYNSDORP '2 DE 25' to USA.

This confirms that the postage rate to the USA has changed from 2½d to 3d. The postmark is peculiar. At first glance it looks as though it is a long-serving CGH survivor. However, the solid bar at base without a cross suggests this is an early Union datestamp.



1926. Cover. Single 3d blue MC cancelled CAPE TOWN KAAPSTAD 'APR 16 26' to GERMANY. Bears slogan 'FRUIT FOR HEALTH - VRUGTE VIR GESOND'

The rate paid for this letter to the Germany is 3d. This suggests that the postage rate to Germany has changed from 2½d to 3d.

Late Use of King's Head Stamps: Post London Pictorials 1926 - 1927

On 1st January 1926, a new definitive issue of three iconic London Pictorials, a ½d black & green Springbok, a 1d black & carmine Ship and a 6d green & orange Orange Tree were issued. These were followed in 1926 by a 4d greyish-blue triangle. In 1927, seven new London Pictorial definitives were added to the original three stamps of 1925. The London Pictorials would replace the King's Heads.



1926. Cover. 1d red & black London Pictorial & 2d purple cancelled KIMBERLEY '8 NOV 26' to USA.
The rate paid for this letter to the USA is 3d.



1929. Airmail Cover. 1d red plus 4d bluish-grey triangle cancelled CAPE TOWN 9 '26 AUG 29'
There is no Port Elizabeth receiving datestamp.
Airmail post in SA had been available as a 4d service plus standard letter rate since 28th FEB 1925.



1932. Philatelic Airmail Cover. Pair 1½d chestnut, ½d green and ½d green & black Roto Printing Pretoria. Cancelled VICTORIA WEST '27 JAN 32' to KIMBERLEY.

The rate paid for this letter is 4d, the domestic airmail rate. The standard letter rate has been dropped.



1932. Post Card. Single 1½d chestnut cancelled CAPE TOWN KAAPSTAD 13 '20 MAY 32' to GERMANY.

The rate paid for this post card is 1½d, the European postcard rate.



1934. Philatelic Airmail Cover. Per First "Direct Mail, Imperial Airways S. Africa to Australia. Pair 2½d blue and 1/3d violet cancelled CAPE TOWN 'DEC 3 1924'
 The Airmail rate of 1/8d has been defaced with the Cape Town Four Bar MC.

The Blue pencilled Arrow - 'See back' was used in Darwin to refer the PO to the senders address in SA. This was typewritten, stating: "If not delivered within three days, Please return P.O.Box 2165, Cape Town." Embossing on the reverse flap states, "Philatelia, 75a Beach Road, Mouille Point, Cape Town, SA".



Odds and Ends



VRIJHEID 1925



1914. Piece. 2 x 1/2d green coil stamps
JOHANNESBURG 3 '1 MAY 14'.



UITENHAGE SA Type 2 1916



UITENHAGE
SA Type 3 1915



PRETORIA 2 SA Type 2 1914



STATE MINES 1923



CAPE TOWN F.S.
Foreign Service 1922



UMKOMAAS 1916



WILLOWVALE 1921



REGISTERED
PRETORIA 1914



BLOEMFONTEIN 2 1923



TELEGRAPHIC COUNTER NUMBERS
Counter Clerk Cancellers,
The Central Telegraph Office,
Johannesburg Post Office.



BRAMLEY
JOHANNESBURG 1923



BEDFORD 1923, BETHESDA 1915, CALEDON 1921, QUEENSTOWN 1923
Single Circle Datestamps.

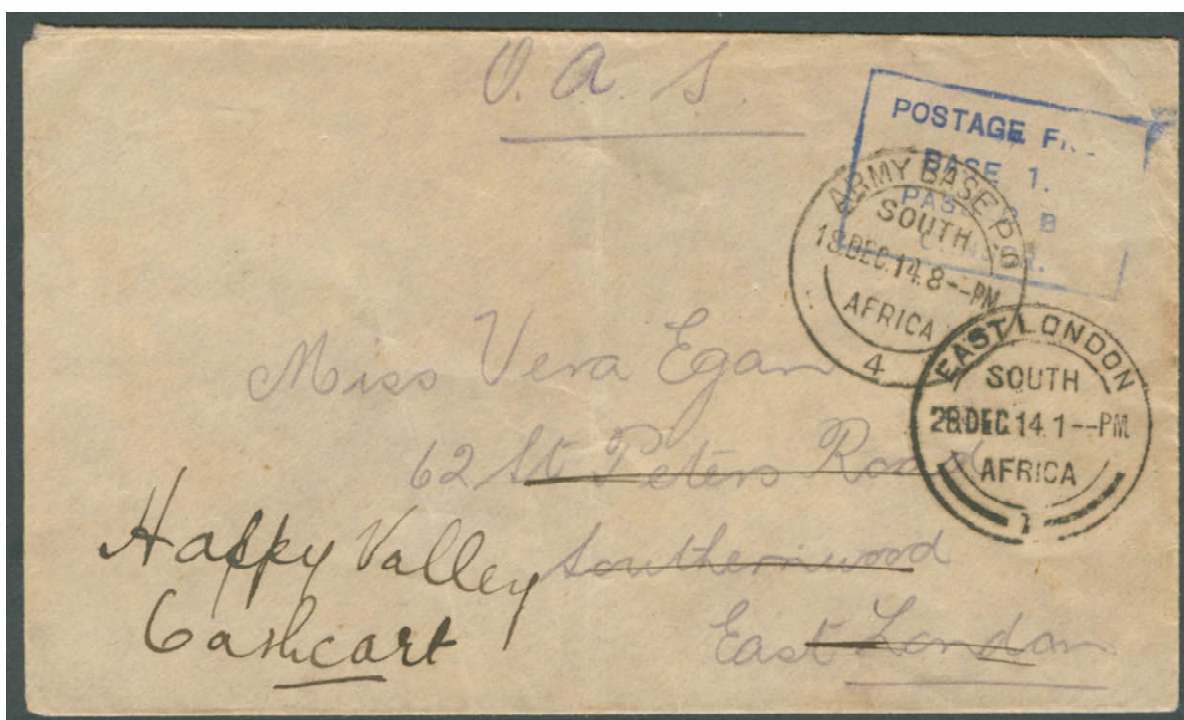


HOLLARD ST. 192?
P.M.BURG 1919
Money Order Offices.

King's Head Stamps used in South West Africa during WW1: 1914 - 1919

South Africa declared its support for Great Britain and the Empire on 14th September 1914. It immediately set about planning an invasion of neighbouring GSWA (German South West Africa). Kicking the Germans out of SWA was something that many South Africans had long wanted. Indeed, their Prime Minister, Louis Botha, had in private expressed a willingness to do so some years before war started.

In January 1915, the South African Union Defence Force under the command of the Prime Minister, General Louis Botha, invaded GSWA in a three-pronged attack. The Germans surrendered the territory unconditionally in July 1915. Prior to their surrender, standard South African stamps had been used in SWA. These were almost entirely the then current issue of 1913 King's Head stamps. In January 1923, the first overprinted King's Head stamps showing 'South West Africa. Zuid West Afrika.' were issued.



Robert Hill

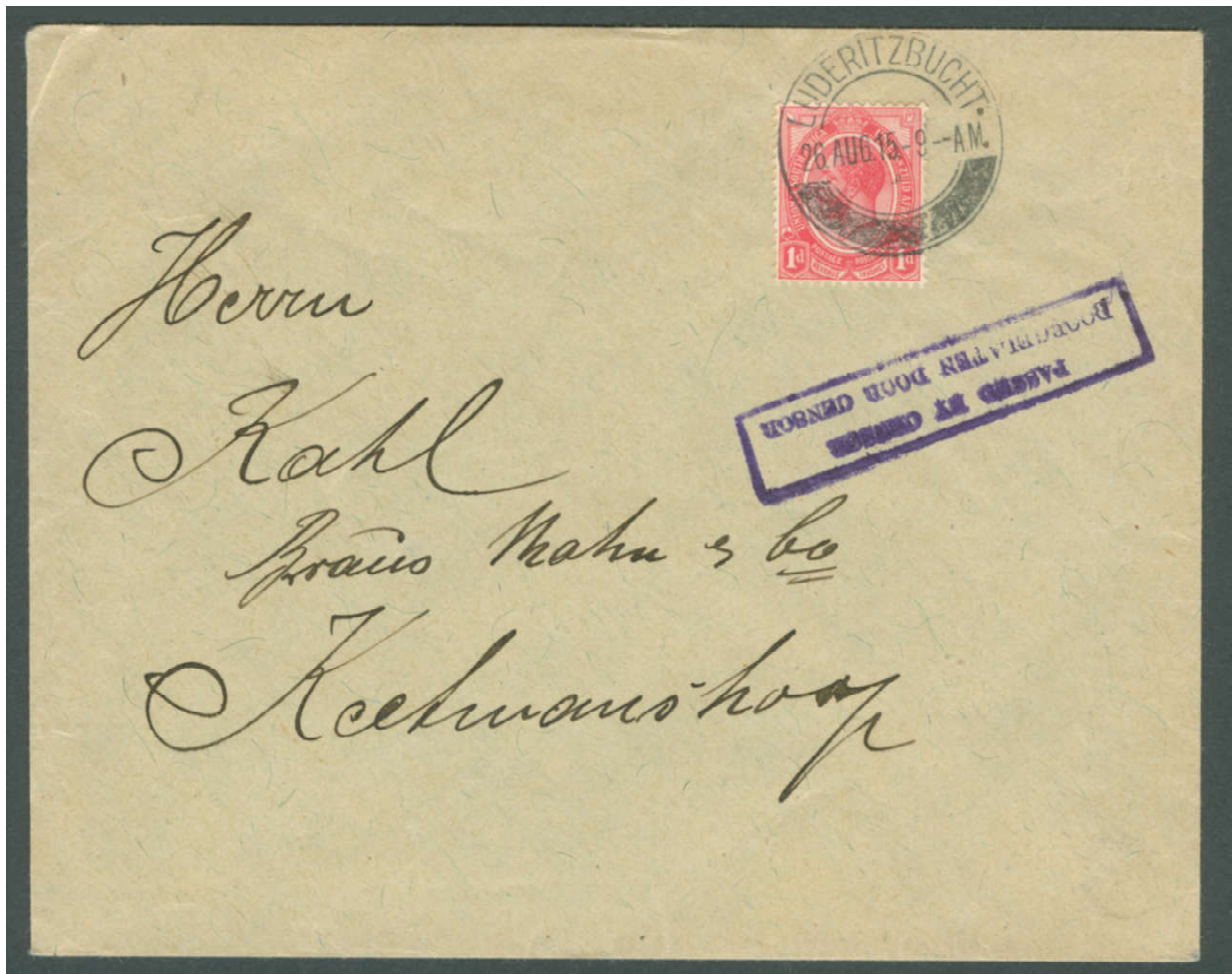
**1914. Cover. OAS. Blue Boxed 'POSTAGE FREE. BASE 1. PASSED BY CENSOR'.
Cancelled ARMY BASE PO 4 SOUTH AFRICA '18 DEC 14'. SA Type 2.
Received EAST LONDON SOUTH AFRICA 1 '28 DEC 14'. SA Type 2.**

The point about including the cover above which has no King's Head stamps attached having been sent FREE on OAS (On Active Service) is that the South African Army received the SA Type 2 datestamp for use in its bases in occupied South West Africa. This sent a powerful message back home about the vigour and vitality of the new Union of South Africa Defence Force.

Significantly, while many ex-GSWA datestamps were commandeered as the spoils of war and adapted for use alongside new SWA datestamps, thereby delighting SA postal historians, the SA Type 2 datestamp was not issued for use in SWA post offices, probably because such a statement of territorial acquisition of SWA by South Africa was sensitive and premature, the ownership of the territory having not yet been agreed.

An Omission

A feature of the earliest King's Head stamps used in SWA is their cancellation by original GSWA datestamps before they were altered by Union postal services. Unfortunately, we are unable to show examples of these items here. Readers wanting to see such are referred to Tony Howgrave-Graham's 'South West Corner' in 'The Springbok', the quarterly journal of the South African Collectors' Society. The issue you want is October 2020, "Use of Unaltered German Cancellers by Union Postal Services". As SACS do not have an email address, contact: Editor <editor@southafricanphilatelyclub.com>



1915. Cover cancelled LUDERITZBUCHT '26 AUG 15' to KEETMANSHOOP.

The domestic rate paid is for a local letter posted and delivered in SWA is 1d, the same as SA. The European-size cover has a long, thin violet rectangular bilingual 'PASSED BY CENSOR' cachet.



1916. Registered Piece cancelled LUDERITZBUCHT '27 JAN 16' to USA.

The rate paid is for this Registered letter from SWA to the USA is 9d.

The rate comprises 1d red + 2d purple + 6d black & violet.

Assuming the Registered Letter rate is the same as a letter from SA to the USA, it is 4d for Registration and 2½d thereafter for each ½ oz or part thereof. As this letter has been charged at 5d, it weighed over a ½ oz and less than one ounce.



1916. Cover cancelled OKAHANDJA S.W.AFRICA '7 APR 16' to SWITZERLAND.

The rate paid for the letter is 2½d, the standard SA rate for a letter under ½ oz to Europe.

The new military administration's postage rate is the same for SWA as SA.

The cover has a dark blue 'PASSED BY CENSOR CN' cachet. ('N' appears as an inverted 'U'). MS '21.4.16'.

This new datestamp describes the territory as 'S.W.AFRICA' ie. it is not South Africa. Putzel No. 2c.

The despatch date above is unclear and appears to show '7 APR 15' contradicted elsewhere.

The blue attenuated 'CENSOR' cachet clearly shows that it was censored in Cape Town on '22 APR 1916'.

The OBC 99 label on the reverse shows that it went via the Cape Town Censor to Switzerland.

Received in GENEVA, SWITZERLAND '14 V 16'.





1916. Cover cancelled OKAHANDJA S.W.AFRICA '7 FEB 16' to WINDHUK. No Censor mark.
The rate paid for the letter is 1d, the standard SA rate for a domestic letter.



1916. Cover cancelled KEETMANSHOOP S.W.AFRICA '3 APR 16' to WINDHUK. Small Boxed violet PBC.
The rate paid for the letter is 1d, the standard SA rate for a domestic letter.



1916. Cover cancelled AUS S.W.AFRICA (illegible) '4 OCT 16' to LUDERITZBUCHT.

Vertical 'PBC' and 'Prisoner of War Free of Charge AUS' cachets, both in violet.

The rate paid for the letter is 1d, the standard SA rate for a domestic letter.

Aus was the site of a large Prisoner of War camp, largely built by its German prisoners.



1917. Cover cancelled WALDAU '2 FEB 17' to WINDHOEK. Local Mail. PC B / 100.

The rate paid for the letter is ½d, the printed matter or book post rate for items up to 2 oz.

Putzel says of the WALDAU canceller, "This postmark is so rare that it is difficult to study it".

This postmark, Putzel's No. B2., shows a seriffed font. It therefore cannot be a corrupted B1.

This example is earlier than the two partial examples Putzel shows in his "The Postmarks of GSWA".

A feature of mail from SWA during this time are the many large, European-size letters favoured by Germans.



1916. Cover cancelled TSUMEB S.W.AFRICA '7 OCT 16' to WINDHUK.
The rate paid for the letter is 1d, the standard SA rate for a domestic letter.
The cover has been resealed with a bilingual 'OPENED BY CENSOR 100' label.

This cover was sold as a Registered Letter but the rate paid does not support this claim.

This cover is addressed to a 'Highborn' Internee. German officers received parole but the ranks were confined to POW camps. The highborn addressee is presumably an officer on parole in Windhuk. This is another example of the large European letter size covers used by the German authorities and colonists.



1917. Cover cancelled KLEIN WINDHUK '11 JAN 17' to SWITZERLAND. PC C9.
The rate paid for the letter is 2½d, the standard SA rate for a letter to Europe. Passed Censor C9.



1917. Post Card cancelled SEEIS '8 FEB 1917' to KEETMANSHOOP. PC B 100.
The rate paid for the letter is ½d, the standard SA rate for a domestic postcard. Passed Censor B 100.



1917. Registered Letter cancelled WINDHUK '8 OCT 17' to SWAKOPMUND. PC B 100.
The rate paid is 5d. This is 4d for a Registered Letter and a 1d for local postage. Passed Censor B 100.



1917. Post Card. Cancelled OTJIWARONGO '30 SEP 17' to SWAKOPMUND. PC B 105.
The cover has transited via KARIBIB '1 OCT 17'.
The rate paid for the letter is ½d, the standard SA rate for a domestic postcard. Passed Censor B 100.



1918. Cover. Cancelled NAKOB '2 FEB 18' to WINDHUK. PC B 100.

The rate paid is 1d, the standard SA letter rate. Passed Censor B 100.

Addressed to the Officer Commanding Interned Schutztruppe.

South Africa entered WW1 in part because of the invasion of the Union by German Schutztruppe at Nakob.



1919. Post Card. 1/2d lime-green KALKFELD S<W. AFRICA '27 6 19' to SWAKOPMUND.

Both these datestamps have been captured and adapted by SA Forces.

Transit via OMARURU, the only new SA occupational datestamp.



1920. Cover. Strip x 3 ½d green WINDHUK S.W.A.P. '11 JUN 20' to PRETORIA.
 In 1920 in South Africa the local letter rate was still 1d. So why has 1½d been paid here?
 The recipient of the letter is the renowned South African intellectual Eugene Marais.
 Putzel says of this postmark "First observed '9 6 20' it is scarce". (This is '11 6 20').



1921. Cover. Pair 1d red cancelled SWAKOPMUND '9 6 21' to KARIIBIB.
 If the rate has not changed, this cover weighed over ½ oz.



1922. European-size Cover. 3 x single 1d reds cancelled KEETMANSHOOP '11 DEC 22' to GERMANY.

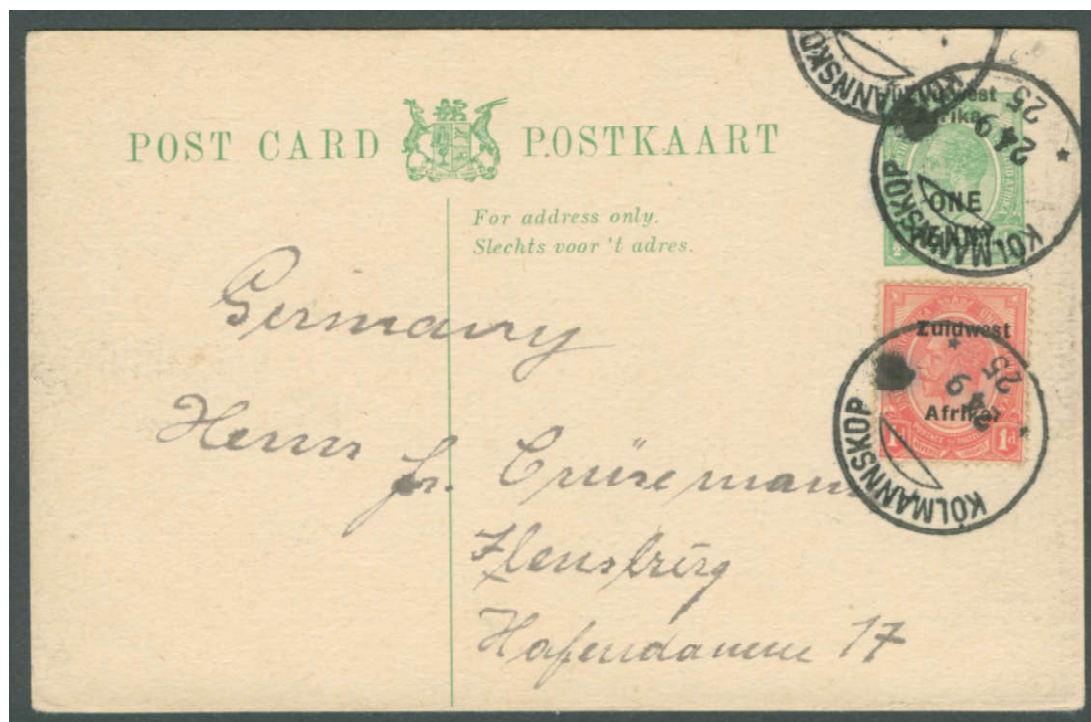
This cover makes little sense unless the previous 2½d European rate has changed to 3d. Alternatively, in the absence of a ½d stamp, the sender chose to use a 1d red, thereby paying ½d too much.

Overprinted King's Heads used in South West Africa: 1923...

In 1919, the League of Nations gave South Africa a mandate to rule the territory of South West Africa. In January 1923, a set of twelve King's Heads overprinted 'South West Africa Zuid-West Africa' were issued. There were at least three further similar issues with slight changes to the spelling of the overprint.



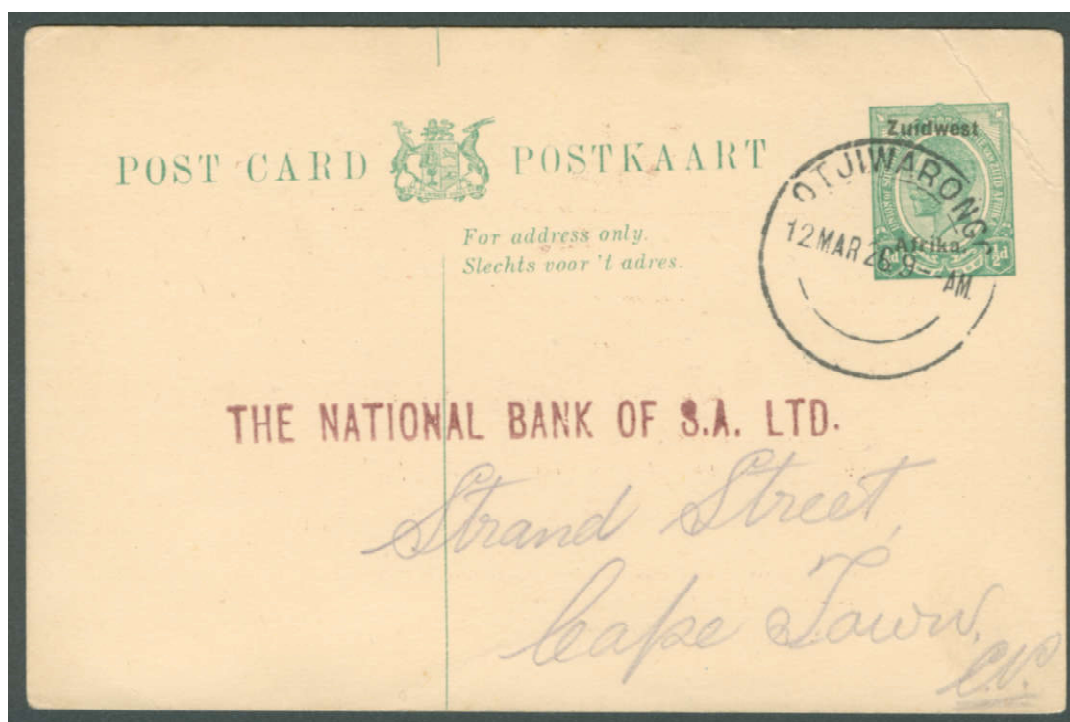
1925. Post Card. Cancelled TSUMEB S.W.AFRICA '28 OCT 25' to KOLMANSKOP.
 ½d green Domestic rate Post Card overprinted 'ONE PENNY' and 'South West Africa'
 The domestic rate for a post card has increased from ½d to a 1d.



1925. Overprinted 'ONE PENNY' Post Card cancelled KOLMANNSKOP '24 9 25' to GERMANY.
 Upated with 1d red for 2d mail to Germany via Luderitz (reverse).
 The European rate for a post card has increased from 1½d to a 2d.



1926. Front. Overprinted pair vertical 1d reds cancelled WINDHOEK SWA '15 JA 26' to ENGLAND. Presumably, the new letter rate to Great Britain is 2d.



1926. Post Card. Original overprinted 'Zuidwest Afrika' cancelled OTJIWARONGO '12 MAR 26'. Addressed to Standard Bank Cape Town from Otjiwarongo branch. Despite the rate for a post card having increased from ½d to a 1d., this has been sent at the old rate.



1926. Post Card. Original overprinted 'South West Africa' cancelled WINDHOEK '9 DEC 26'.
Despite the rate for a post card having increased from ½d to a 1d., this has been sent at the old rate.



1927. Post Card. Original overprinted 'Zuidwest Afrika' cancelled ELIZABETHBUCHT SWA '21 MR 1927'.
Addressed to Windhoek and cancelled in violet by skeleton relief canceller.
Only seen by Putzel twice, both times dated '21 MR'. Believed to be rare. Clearly philatelic!



1927. Stamps on piece. Postmarks illegible.

These are the last King's Heads to be over-printed for use in South West Africa. The abbreviation 'S.W.A.' is practical and trilingual, working equally well in English, Afrikaans ... and German!.

We would appreciate receiving your corrections.

**This Club Collective display will be continued with contributions from Club members.
Please provide examples of King' Head postal history from 1913 - 1927 or later.**

**Please submit your contributions to me by email as scanned 300 dpi JPG files.
Please submit your corrections by email.**

Email Editor <postmaster@southafrican philately club.com>



The End

This display is the copyright of the South African Philately Club and its contributors, Steve Hannath and Robert Hill. This material cannot be copied in full or in part without the express written agreement of the South African Philately Club and its contributors.

A grateful South African Philately Club thanks

Robert Hill

for sharing his King's Head material with us.

13/12/2020

If you have questions and want to contact the Club, please contact:

"Postmaster" <postmaster@southafricanphilatelyclub.com>

www.southafricanphilatelyclub.com