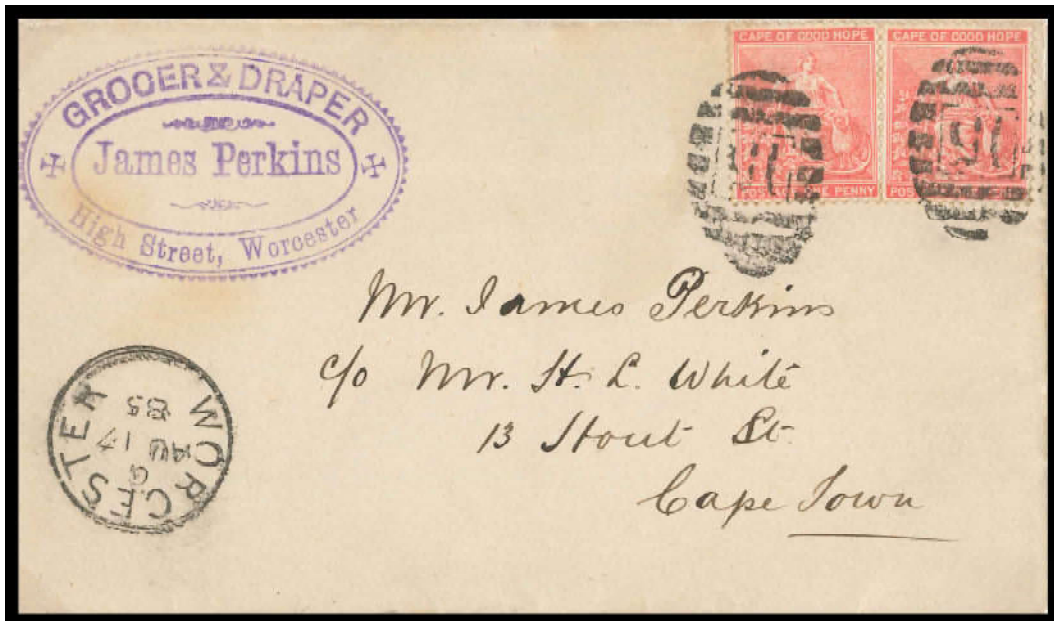


# WORCESTER NAAF (HUB)

Translation of the Text.

Gawie Hugo



Plaaslike pos gedateer 17 Aug 1885. Kanselleringsstempel "BONC" No 15 (Dikstreep Ovaal Numeriese Kansellering stempel van 1865 met 9 strepe), plus Sirkel Datumstempel van 1878 (CDS 10).

Local post dated 17 Aug 1885. Cancelling stamp "BONC" No 15 (Thick Bar Oval Numeral Cancellor stamp type from 1865 with 9 bars), plus Circular Datestamp from 1878 (CDS 10).

**This display is the copyright of the South African Philately Club and its Contributor. This material cannot be copied in full or in part without the express written agreement of the Club and its Contributor.**

[postmaster@southafricanphilatelyclub.com](mailto:postmaster@southafricanphilatelyclub.com)



# Worcester Display Translation.

This display was produced by Gawie Hugo of Worcester, Western Province, South Africa. The translation is by Steve Hannath, Cambridge, England, a poor student of Afrikaans in high school. Some changes have been made to the phrasing but hopefully not the meaning. The translation can be downloaded separately as a PDF file which you can print out and refer to as you read this. Alternatively, it has also been included as an addendum at the end of the display.

## Page 1.

The title, 'Worcester Naaf', refers to the Worcester as the 'Hub' of the surrounding area.

Using available material, the aim of this display is to give a concise understanding of the phases and development of the postal history of Worcester from the 1820's to date.

Originally a sub-drostdy (sub-magistracy) of Tulbagh, the town was declared a Drostdy (Magistracy) in 1822. In these early years post was under the jurisdiction of the Landdros (Magistrate) but was carried by 'posboere'\* and later field cornets. Arising from its Drostdy status, Worcester fulfilled the head post office functions for the area, like those postal agencies and sub-post-offices that had opened in the course of time.

\* Goldblatt says "... letter carriers were recruited among civilians, who were subject to military discipline." These 'civilians' would most probably have been drawn from the farming community ie. 'Boers'.

Post was originally transported to Worcester by postcoach over Tulbaghkloof and by the Bainskloof route after its opening on 12 September 1853. After the railway line was opened in 1876 post was transported by rail.

From 1992 the postal services in RSA were restructured and divided into 26 areas. Worcester remained the hub of the region with its borders greatly expanded beyond that of a head post office jurisdiction.

## PLAN

Pg. 2 to 15 covers the history of Worcester and the development of the postal system.

1. Foundation of Worcester	History of Worcester
2. Before adhesive stamp era	Covers from the period 1828 - 1831
3. Early postage era	Post items and postmarks from 1856 - 1886
4. The Arrival of the Railway	The station, Hex River Pass and TPO
5. Post from the Boer War	Post to and from Worcester during the Boer War
6. Post from the First World War	Post from Pastor Sprengel as internee
7. Stamps from the Union of SA.	Kings Heads and 1926 triangles in use

Pg. 16 to 23 lists most of the post offices and agencies under the Worcester head office and under the new division as the hub of this area.

8. Worcester as Head Office	Postal Agencies, sub offices and POs under the jurisdiction of the Worcester office.
9. Worcester the "Hub"	The new order after 1992, an enlarged service area and the rationalisation of duties.

Pg. 24 to 32 shows a variety of items different to daily use which also form a part of the post office's duties.

10. Special Post Items	Newspaper "wrapper" and sample post
11. Telegrams and postal forms	Telegraph history
12. Income protection	Tax stamps and modern forms of tariff protection
13. Special services	Kleinplasië special permanent datestamp and charity stamps and labels
14. Commemorative covers	Special covers and postmarks
15. Foreign post	Post from foreign clients
16. Printing errors	Errors in postmarks and spelling errors
17. Bibliography	

## 2

### 1. Foundation of Worcester

#### 1.1 Plan of the Town

The "Government Gazette" of 20 November 1819 makes the first mention of Worcester. On the 28th February 1820 the first sale by auction of erven (plots) was held. This is seen as the day that Worcester was founded.

Caption: A Photo of the farm building at Roodewal, the farm that was appropriated for the site of the town. It is also where the sale by auction of the first plots took place. The house served as a residence for the first Landdros (magistrate) and preacher. Today it is the centre of the showgrounds known as Kleinplasia.

#### The Drostdy

The postcard of the Drostdy, the seat of the justice system from 1822 for the Worcester Magisterial district. The first magistrate was Captain Charles Trappes, who had the building erected. Building began in 1823, was partly finished in 1825 and used until 1893.

Caption: The postcard is from the Photo Stahla series, Meiring & Quenet, Worcester #22980. The stamp is a 1/2d KE VII and cancelled Worcester (Double Circle Datestamp) DCD 2 of 1900.

## 3.

### 1.2 The Postal History

Early in the 19th c. a start was made to create a postal system to reach farmers (boere) that had systematically trekked deeper into the interior. The "Cape Town Gazette & African Advertiser" announced that the postboers Smit in Breederivier and Naude in Hexrivier were the handlers of post in the area.

Caption: A cover from N. E. Lambrechts, Veldkornet in George, (CC 10 postmark) to Worcester. The cover is marked "Official" and is from a Veldkornet, as a result the postal charge of 3d "to pay" is not clear. The date is 1827. From 1825 (the currency had changed over from Rijksdalers to Sterling.

### 1.3. Post Offices

The first post office was opened in Baringstraat in February 1822, probably the Beckhuis. A shopkeeper, George Parker, was appointed the first postmaster. The first postmark CC13 (Crowned Circle no. 13) was taken into service in 1822.

Caption. A very early photo of the Beckhuis on the corner of Kerk and Baringstraat. The double story part right in the photo probably housed the post office.

## 4.

A pretty example of the "Crowned Circle" town postmark of the 1822 period.

Caption: A photocopy of a cover dated 15 June 1822 with the PM 4 postmark of Worcester that was cut from wood. This was probably used as an interim stamp until the CC13 arrived.

The "Worcester Advertiser" of 21 December 1882 reported that 2 offices had been set up in the Town Hall to accommodate the Post and Telegraph office as a result of the previous accommodation being too small. The first post office building was built on the Market Square and was in use from 1893 to 1927, after which it was again replaced.

Caption: A very early postcard of the Worcester post and magistrates office on the corner of Hoog and Adderley Street. The reverse shows the CoGH1/2d KW VII stamp cancelled with the Worcester DCDS 11 postmark dated 5 Aug 1908, as well as "Breede River Station" railway post office datestamp.

## 5.

### 2. Before adhesive stamp era

Four covers between the Worcester Agent to the Secretary of the Orphan Chambers.

#### 2.1 Cover from 1828

Caption: Worcester stamp unclear but the "crowned circle" of Cape Town "General Post Office", the receiving post office, is relatively clear, however the date is incomplete. The red "7" hints at a postal rate of 7d, the standard tariff per single page content.

#### 2.2 Cover from 1829

Caption: Cover from Worcester to Cape Town marked "OHM service". Cape Town G P O stamp (DLS3) dated 7 Feb 1829 and Worcester post office stamp (CC 13). The red script is the postage to pay, 2s and 4d, ie. 4x 7d for the 4 pages content.

## 6.

#### 2.3 Cover from 1830

Covers from Master of the Orphan Chambers Cape Town to Worcester.

Caption: Cape Town GPO Dated 18 July 1830. Left the "boxed" Post Paid (Goldblatt PP2) stamp, taken into use in 1827. Postage again 7d. No receiving post office stamp.

#### 2.4 Cover from 1831

Caption: Worcester post office stamp (CC 13) and GPO Cape Town (DLS3) dated 5 Aug 1831. Postage of 1s and 2d is marked "Paid" in manuscript. Therefore 2 pages content at 7d each.

## 7.

### 3. Early postage era

#### 3.1 Cover from 1856

Caption: Cover directed to the master of the Supreme Court, Cape Town. 1d stamp in worn condition. Stamp probably SACC 3. The cancelling stamp is obviously the small triangular type, Goldblatt STO 1b with 32mm base, height (baseline to apex) 28mm and 18 transverse lines, from base to apex, showing also the 2 broken lines directly under "C". In use from 1 September 1853 in the Colony. Reverse Worcester 7 July 1856 and Cape Town 8 July 1856 postmarks, both the DTO (Dated Town Oval handstamps) marks in use from 1 September 1853.

#### 3.2 Cover from 1874

Caption: Despatched post office Cape Town with DNB 4 (Duplex Numeral Cancellor) stamp and Worcester receiving post office with DA 4 (Double Arc of 1857) stamp. Postage 4d, the domestic rate per 1.2 oz from 1 March 1846 to 1870.

## 8.

#### 3.3. Local cover from 1878

How would the Worcester addressed postal item be sent to Tulbagh?

Caption: Two cancelling stamps: Worcester dated 14 February 1878 of the Double Arc type "DA 4 of 1857, also Tulbagh with DTO3" (Dated Town Oval) of the same date. Postage rate now just 1d.

#### 3.4 Worcester despatched cover of 1885

Caption: Local cover dated 17 Aug 1885. Cancelling stamp "BONC" No 15 (Thick line Oval Numeric Cancellor) stamp type of 1865 with 9 lines plus Circle Dated stamp of 1878 (CDS 10).

## 9.

### 4. The Arrival of the Railway

The railway line to Kimberley opened in 1876. In 1884 it was announced that the railway stations Breede River, Goudini Road, Worcester, Hex River and Hex River East would serve as post offices.

Caption: The postcard shows Worcester Station in about 1876. The postcard is from Bain's Spes Bona series.

Postmarked Worcester 23 Sept. 1913, the stamp is a 1/2d KE VII from Transvaal, an example of Inter-Provincial use.

### The Hex River Pass.

Caption: This postcard is by T. D. Ravenscroft, No B194. Despatched from Port Elizabeth to Blaney Junction, via King Williamstown 1905. Cape of Good Hope 1/2d KE VII stamp.

## 10.

### T.P.O. (Travelling Post Office)

This postal service was introduced on the main routes in 1883 to improve the service. Special train wagons were made for this purpose. TPO Up was for post from the interior to Cape Town and TPO Down that for the North.

Caption: TPO Up: Stamp (Goldblatt TPO 3) type dated 12 October 1883 from Du Toitspan to Worcester with CDS 10 dated 13 October 1883.

Caption: TPO Down: Stamp (Goldblatt TPO 8) type dated 4 July 1886 and Worcester receiver on 5 July 1886, the CDS 10 type.

## 11.

### 5. Post from the Boer War

#### 5.1 Cover: Worcester to Paarl

Caption: Despatch cancelling stamp Worcester partially covered, receiving stamp on reverse Paarl dated 12 February 1902. Resealed with martial law censor label and cancelled with triangular Paarl blue censor mark, initialed and dated 17 February 1902. Also a second triangular Past Press Censor stamp without any identification.

#### 5.2 Cover: Ceylon to Worcester

Caption: Despatch postmark, DIYATALAWA, Ceylon dated 16 April 1902, stamps 2x (SG256) and 4c (SG258). Cape Town 16 August 1902 plus Censor / Prisoner of War stamp.

## 12.

#### 5.3 Cover: Worcester to Gordons Bay

Sender: The Western Wine Brandy & Spirit Co. Ltd.

Caption: Worcester Cancellor 5 Nov 1901 with Stellenbosch SC 6 (Squared Circle) datestamp 22 Nov and again 26 Nov 1901. Large censor "cachet" approved, press with date 22 Nov 1901. Reverse Sir Lowrys Pass 27 Nov and Gordons Bay 27 Nov 1901 (CDS 17) as final destination.

#### 5.3 Cover: Worcester to Ceylon

Caption: Postcard dated 7 April 1902. The postcard is from the Queen Victoria series No. P5pa. Despatched Worcester cancelling stamp DCDS 1 of 1901. Showing blank triangular stamp and censor cachet "EJB" (Baumann) Was addressed Diyatalawa Camp, but readdressed to Ragama Camp, Ceylon.

## 13.

### 6. Post from the First World War

Both the covers are addressed to Pastor Eugen Sprengel. He was interned during the First World War and was originally held in Pietermaritzburg and later in SWA.

#### 6.1 Cover to Pietermaritzburg

Caption: Despatch cancelling stamp Worcester dated 30 June 1917 with "Passed by Censor" "cachet". No postage was payable. He was in Camp 4, Barrack E. The note bottom left is presumably "Money Order" £5.

#### 6.2 Registered Letter to SWA

Caption: 4d Registered Letter with KG V stamp, cancelled Worcester with Keetmanshoop on reverse dated 24 Mei 1918. Addressed to: Rev. E. Sprengel No 60, Interneringskamp, Kanus, SWA Protectorate, written free-hand "Prisoner of War". Red Censor label No 99, cancelled with 3 "Passed Censor" "18/99 stamps.

## 14.

### 7. Stamps from the Union of SA.

#### 7.1 1913 1/2d Stamps

A nicely used horizontal pair, KG V from a stamp booklet, with partial "tete-beche" border. Postmarked Worcester dated 23 Feb 1923.

#### 7.2 Registered Letter

Caption: Stamps horizontal pair KG V 2 1/2d with Worcester cancelling stamp 30 Sept. 1915.

#### 7.3 First Day of Issue 1 May 1935

Caption: Stamps horizontal pair KG V 2 1/2d with Worcester cancelling stamp 30 Sept. 1915.

Caption: Set of 4 single stamps, Silver Jubilee KG V with Worcester canceller 1 May 1935.

## 15.

#### 7.4 Registered Letter 1926

Caption: A Registered Letter sent on 11 Aug 1926 and returned undelivered to Worcester on 19 Aug 1926. The post office "Roodehoogte" was in error considering Roodehoogte is near Villiersdorp and the farm "Dasbosch" is near Louwshoek, near Rawsonville. Stamps are the 1926 issue, SACC 32. The cancelling stamp is the temporary or "relief" type.

## 16.

### 8. Worcester as Head Office

In the course of time a number of post offices, sub-offices and post agencies were opened, all with Worcester as head office. All these postal handling points can be divided into 2 groups, namely; A. those which after a short period of time were transferred to other offices and B. those that functioned under Worcester.

A.1 Ceres 1852; De Keur, Koue Bokkeveld 1856; Saron 1853 and Vogel Valley 1856, all outside the Breede River valley.

A.2 As the construction of the railway line proceeded northward, postal agencies and railway offices were opened ie. Triangle Station / Rail 1882 (later Matroosberg); Konstabel Station / Constabel Rail 1876; Jan de Boer Rail 1872; Montagu Road 1877 and Osplaats RO. STA 1907. These were all transferred.

A.3 This group looks like it should be more in the Karoo area namely Zoute Kloof 1858; Zaaiplaats 1870; Patatsrivier

1853. The Worcester Advertiser of 27 September 1866 asks for tenders for the transport of post from Zoutekloof to the postal agencies of Zaaipplaats, Klein Roggeveld and Barends Kraal, and also to Elandsfontein.

The B group offices or agencies remained subordinate (to Worcester) or were later closed.

B.1 Bainskloof 1847 to 1853, Breede River End 1849 - 1855 and later Darling Bridge 1852 -1876. As the construction of the pass progressed the post agencies were moved. The pass was opened on 12 September 1853.

Caption. Postcard of Bains Kloof by Schaefer & Traill, photo T. D. Ravenscroft. Postage stamp 1d KE VII end cancelling stamp Worcester DCDS 11 of 22 July 1904.

## **B.2 BREERIVIER**

The "Cape Town Gazette & African Advertiser" of 17 February 1810 mentions Breed River and announces one Smit as the postboer for the area. The postal functions continued uninterrupted as the office moved to the station (see below) and back, becoming Breerivier from 1946 to date.

Captions. Breede River Station, Breerivier Stasie, Breerivier

## **17.**

### **B.3 BOTHA**

Also a railway station. It began as the Bosjeman's Vlei postal agency 1 Dec. 1898 to 1 Nov. 1902 when it became Botha's Halt, a sub-post office until 26 Mei 1952 when it became known as Botha.

Caption: Both stamped and dated 30 October 1903 with railway postmarks of the RO2 (skeleton relief) type with BOTHAS HALT the despatcher and GOUDINI ROAD the receiver.

### **B.4 GOUDINI-WEG / ROAD / STATION**

A postal agency from 1876 to 1906 when it transferred to the station until 1910, thereafter a postal agency again until 1948 when it became a post office to date.

### **B.5 HEXRIVER / RAIL / STATION**

In 1859 veldkornet posts were announced for "Hex River Onder" (Under) and "Hex River Achter" (Behind). In 1884 the railway listed the stations Hexriver and Hex River East. From 1903 it was listed as a station post office, but was moved away from, then back to the station. From 6 March 1950 it was listed as a post office.

### **B.6 HEX RIVER EAST / DE DOORNS**

The "Cape Town Gazette & African Advertiser" of 17 February 1810 mentions the postboer Naude as responsible for post in Hex River. In 1859 it was announced that Hex River Achter was a field cornet (Veldkornet) post. After 1878 Hex River East was listed as a postal agency and later a sub-office. From 1878 it became known as De Doorns.

Caption: Cover showing Hex River East datestamp 18 May without year. Following the postmark on the reverse, the year is 1887. The postmark is the Circle Datestamp of 1879 (CDS 12). The cancelling postmark is the Thick Line (9 Line) oval numeric canceller # 349.

## **18.**

Caption: De Doorns: Was first Hex River East until 1898, thereafter the name was changed to De Doorns to date. Postmark dated 2 Jul 1919. Block of 4 KG V stamps from stamp booklet.

### **B.7 GOUDINI ? RAWSONVILLE**

Goudini was listed as a field cornet post from 1859 to 1867. Goudini is the district and Rawsonville the town. It was a postal agency from 1877 and a post office from 1 April 1897. On 24 Sept 1884 tenders were requested for the transport of post from Rawsonville to the residence of the field cornet.

Caption: Photo of the first post office in Brand Street, Rawsonville.

Caption: Postmark dated 19 February 1948, an example of the Temporary (Relief Cancellor)

## 19.

### **B.8 WORCESTER DISTRICT**

The following postal agencies were also listed.

? Voorste Bosjesveld / Hammanshof 1882 / Hammans Doornrivier 1902 - 1971.

Moordkuil 1936 to 1979; Overhexrivier 1858 - ?; Slanghoek 1896 to 1947

Voorsorg postal agency from 1900 to 1926 and thereafter Voorzorg to date.

Stettyn.

Postal agency opened 1 Nov 1896. and finally closed 1 Aug 1955.

Caption: Stettyn postmark dated 21 Nov 1951.

### **B.9 STATION POST OFFICES**

With the expansion of the railway system more new stations and sidings were inserted into the main line with new postal operators.

Twefontein Siding 1899 to 1907, changed to De Wet Station until 1947, thereafter De Wet post office to date.

Caption: Postcard of the Twefontein Bridge over the Hex River at De Wet. Postcard from the "Camera Series". De Wet postmark 3 June 1975 and Registered post label.

Caption: Nuy Siding ("sylyn") 1893 to 1980, thereafter just Nuy.

## 20.

### **Orchard Siding.**

Opened as sub-post office with Telegraph facilities on 1 Jan 1904 to 1 May 1920, thereafter Orchard Rail. From 1923 to date just Orchard.

Caption: Orchard Siding dated 27 Nov 1911 (postmark RO 10) and Orchard 28 Feb 1941.

### **B.10 OFFICES IN WORCESTER**

#### **Russel Street**

Post Office opened 1946 and closed 3 August 1970.

Caption: Postmark non-First Day of Issue of commemorative stamps, ZAR 100 Years, 6 Oktober 1969.

#### **Heatlievale**

Opened 27 March 1950 to date.

Caption: Postal Stationery Registered Letter with cancelling postmark 2 July 1987 and cachet in place of Numbered Registered label.

#### **Zweletemba**

Was originally opened in 1958. Closed many times and re-opened, finally closed as a postal agency in 2007.

## 21.

#### **Parkers Dam**

Opened 5 June 1978.

#### **Worcester Waterfront**

The newest post office in the district, opened on 16 February 2007 in the Mountain Mill Shopping Centre.

#### **Worcester West**

Postal agency opened 1 February 1996.

Caption: Postal piece presumably incorrectly addressed and therefore re-addressed and forwarded.



With the introduction of the HUB system for the handling of post in the 1990s, many of these everyday postmarks are lost. Some of the post offices are closed or reduced to postal agencies.

## 22.

### 9. WORCESTER HUB

During 1994 the postal system was amended nationally and divided into 26 postal regions where postal distribution was done via a centralised hub and spoke system. As one of these hubs, the Worcester post office served as the "head office" responsible for an enlarged geographic area. The borders of the Worcester hub are Porterville, Ceres, Touws River, Barrydaye, Swellendam, Villiersdorp and the Brede River area.

#### Hub Postmarks

Caption: Proof of Delivery for a Registered item with Worcester Naaf (Hub) postmark and GBA (Registered Letter Section) HOK (?) dated 4 September 1998.

#### Postmark Worcester Naaf (Hub)

CAPTION: The postmark dated 15 March 1999 illustrates this (HUB) status.

#### Revenue Protection

Caption: The cancelling postmark refers to "WORCESTER HUB". Nevertheless, the date is inserted incomplete.

A Klusendorff machine was used by the hub to automatically cancel and print WORCESTER 6850. The following covers show addresses all sent with Worcester cancellations and stress the area of service.

## 23.

Postal Piece from Bonnievale.

Postal Piece from Tulbagh.

Postal Piece from Villiersdorp (Vyeboom).

Postal Piece from Barrydale.

## 24.

### 10. SPECIAL POSTAL ITEMS

Caption: Commercial Sample Packing. A printed label applied to on a small card holder, addressed to Worcester. Postage was only 1/2d, the same as the domestic rate for newspapers.

Caption: "Cape Times" newspaper wrapper (Omslag) addressed to England, with Worcester Squared Circle postmark dated 12 April 1900. Postage to England 1 1/2dd. Why was it posted from Worcester, was it not re-addressed?

## 25.

### 11. Telegrams

Caption: Telegram from Geyer, Diep River, to J. Perkins. Postmark type TO2 dated 16 Oct 1886.

Caption: Telegram from Mr Van As, Prince Albert Road, to Malan & Gie on 26 June 1918.

## 26.

Caption: 12 October 1909. Advice on the cost of mailing a telegram, signed by T. Duggan, the Postmaster.

Caption: 1 June 2009, 100 years later. Telegram deliveries advice, still also a function of the post office.

## 27.

### 12. REVENUE PROTECTION

This postcard was posted in Worcester and postmarked with the Circle Datestamp of 1900 (DCDS 1) dated 23 December 1905. The receiving post office, Hopefield, used the same type of datestamp, dated 25 December 1905. The sender did not apply a stamp. According to "Goldblatt" the purple postmark (SP 26) showing the 1d fine, was usually personally designed and made by the concerned post office from cork or a rubber stamp. The other postmark PD5 was in use by larger post offices for taxing purposes from 1904.

Tax stamps (Postage Dues) of the U (Union) of SA 1932 - 1942 series, cancelled Worcester 10 May 1943.

Tax stamps (Postage Dues) fell into disuse but nevertheless attempts to ensure that the full postage on postal items was received were made. The example cover was supplied by the SA post office and includes standard postage. It is not known if any "fine" was paid in this instance.

## 28.

### 13. SPECIAL SERVICES

#### 13.1 Special permanent datestamp.

Kleinplasia Open Air Museum:

Special permanent datestamp used from 1 April 1992.

Caption: The stamp label was distributed at the 100 year commemoration of the Worcester Show. The Roodewal farm buildings is at the heart of what today is known as Kleinplasia Open Air Museum and Showground.

#### 13.2 Cinderella Labels

The issue of stamps for the collection of money was subject to approval and conditions.

Captions: The stamp booklets "Cinderella labels" was issued in 1941 to collect funds for the Blind's Braille printing press. All stamps were 1d, but the booklets number of pages varied. The most expensive booklet (Brown, the following page) has 10 pages, ie. 60d or 5s.

## 29.

Caption: A Second fund-raising attempt in 1956. Stamps were 1d each.

#### 12.3 Standard post stamp booklets

Caption: The stamp booklet of 2000 shows the emblem and address of the Institute for the Blind. It was free advertising and a part of the Post Office's "CORPORATE" initiative.

#### 12.4 "Hallo" stamps of 2005

Caption: Cover of the Institute for the Blind with Braille stamps cancelled on the First Day of Issue. Standard post stamp valued R1.77.

## 30.

### 14. COMMEMORATIVE COVERS

#### 1936 Voorterker Commemorative Cover

Caption: 2,122 Covers were stamped in Worcester on 13 August 1938

1981 Special Commemorative Cover and Postmark with the 100 Years celebrations of the Institute for the Deaf and Blind. The cover is signed by Mr Marais Viljoen, Minister of Education; Marie Mouton, the designer of the stamps; Dr. J. van der Poel, head of the Institute for the Blind; and Dr. Johan Hamilton, head of the Institute for the Deaf.

## 31.

### 15. FOREIGN POST.

#### Two pieces of mail to a Worcester merchant.

Caption: A cover from Lovari & Olivieri, Buenos Aires, Argentina, dated June 1939.

Caption: A cover from W. F. Fisher & Co. Mwinilunga, Northern Rhodesia, dated 25 July 1935.

## 32.

### 16. PRINTING ERRORS

#### 1. Faulty Date

Caption: For 3 consecutive days the date was incorrectly set.

#### 2. Worcester

Caption: A Registration Label incorrectly printed.

### 17. BIBLIOGRAPHY.

Worcester N G Kerk Memorial Book 1821 - 1971 (J A Heese).  
Postmarks of the Cape of Good Hope (Robert Goldblatt)  
The Encyclopedia of S A Post Office & Postal Agencies (Ralph F Putzel).  
Worcester 150 Years (Worcester Town Council).  
De Postwaardestukken van Zuid Afrika.

With acknowledgements to Oom (uncle) Theo Beukes who collected and preserved a lot of this material.



# The End

**This display is the copyright of the South African Philately Club and its contributor, Gawie Hugo. This material cannot be copied in full or in part without the express written agreement of the South African Philately Club and its contributor.**

**06/02/2023**

**If you have questions and want to contact the Club, please contact:**

**"Postmaster" <postmaster@southafricanphilatelyclub.com>**

**[www.southafricanphilatelyclub.com](http://www.southafricanphilatelyclub.com)**