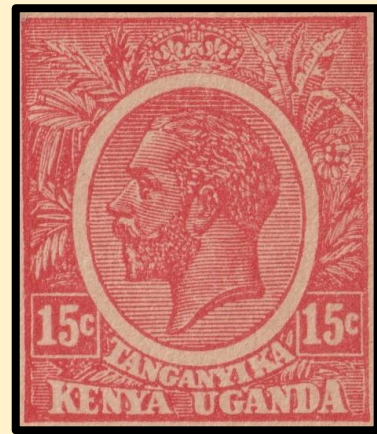
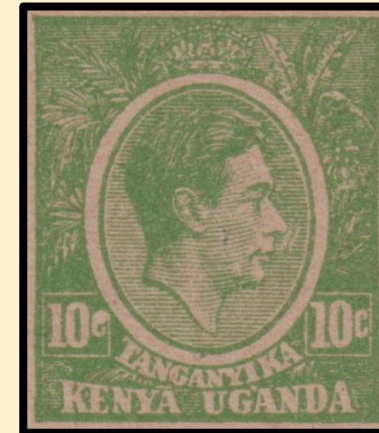
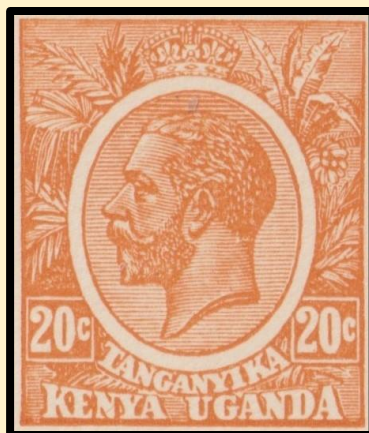
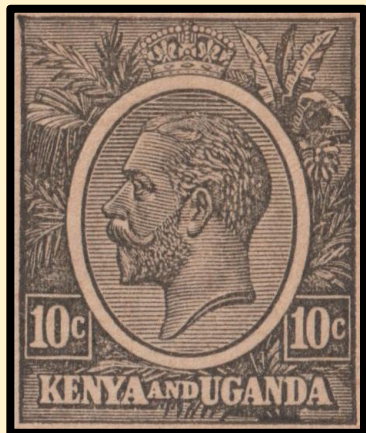


COLONY AND PROTECTORATE OF KENYA
ON HER MAJESTY'S SERVICE



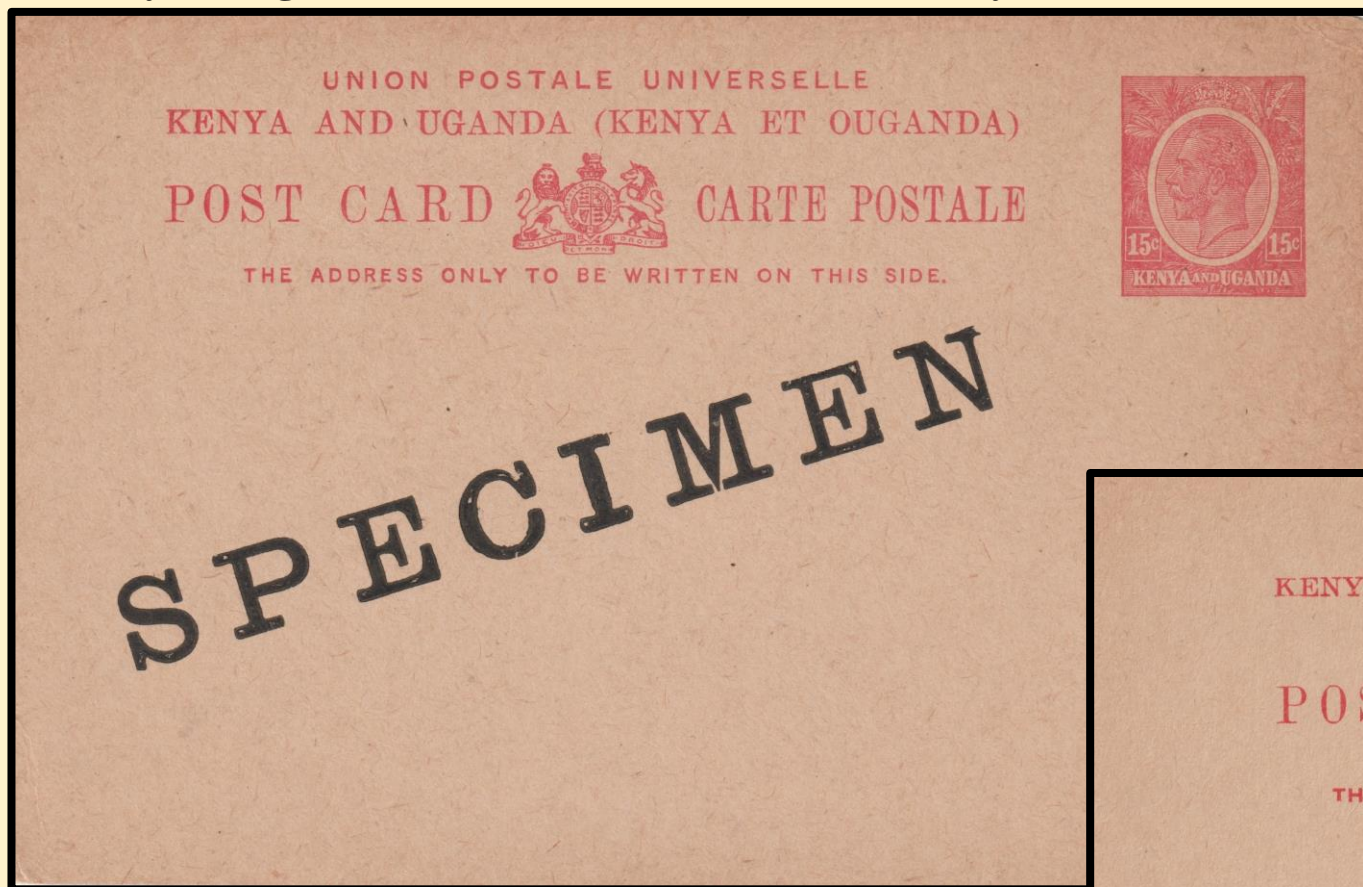
Kenya, Uganda, & Kenya, Uganda & Tanganyika Postal Stationery – Part 1.



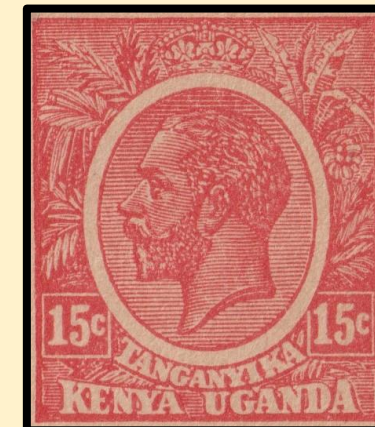
**Postal Stationery is normally thought of as the
Prepaid (& Formula) items issued by the Post Office
for the public's use.**

**In this presentation I have extended that
to include the Postal Stationery issued and used by
government and military forces
in the three countries during the 'K.U.T.' period.**

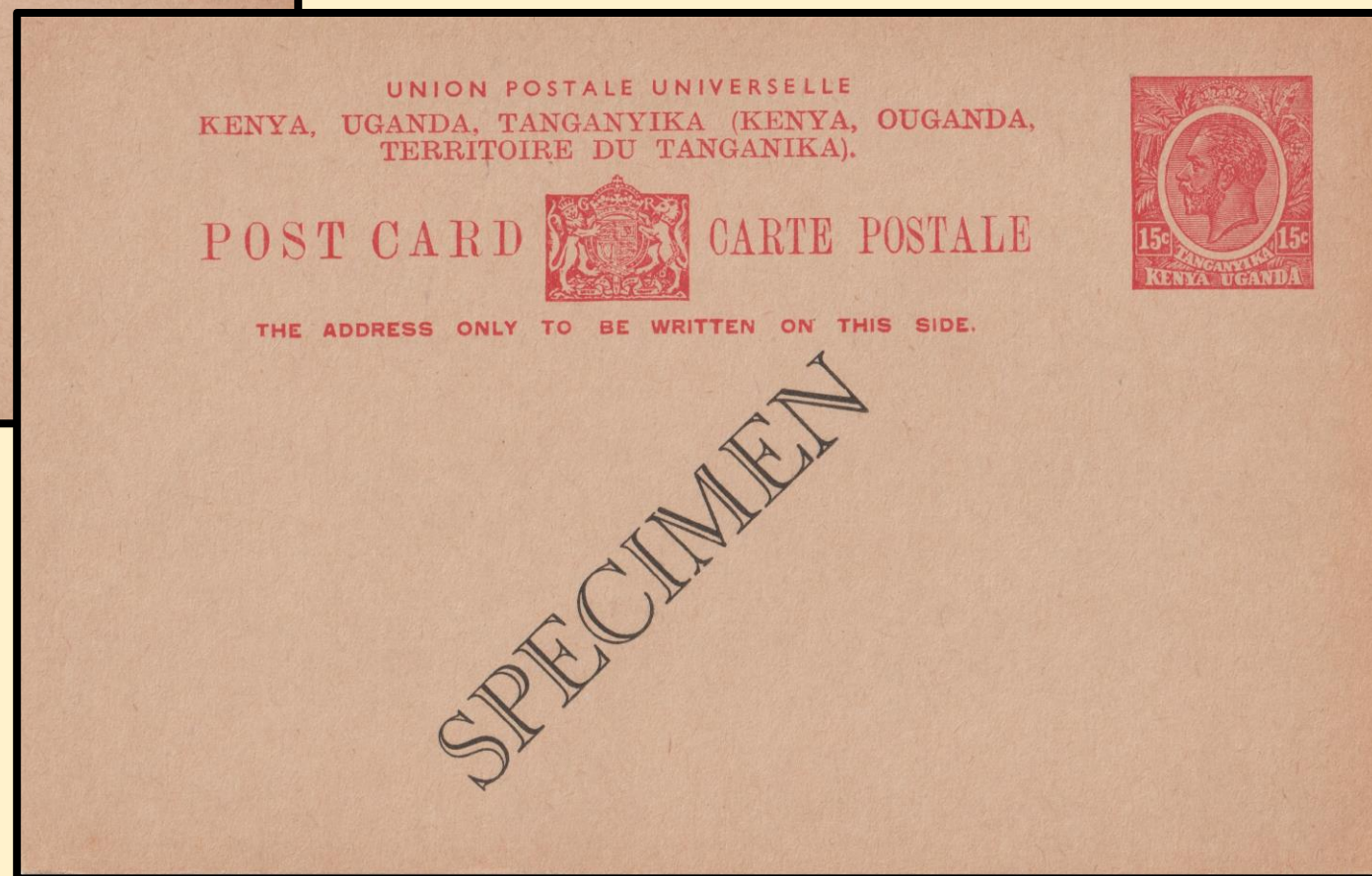
Kenya & Uganda (1923) + K.U.T. Postal Stationery (1935) - 15c Post Cards.



1923.



1935.

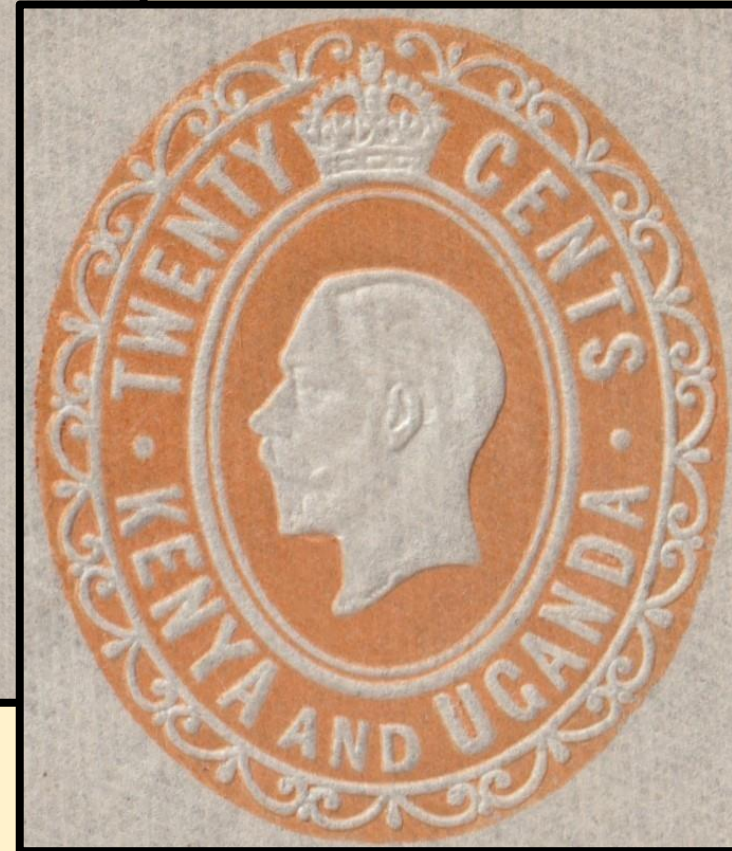


‘Specimen’ examples
with Indiciums enlarged to show design

Note two types of ‘SPECIMEN’ overprints used.

Kenya & Uganda - Postal Stationery Envelope - 1924.

SPECIMEN

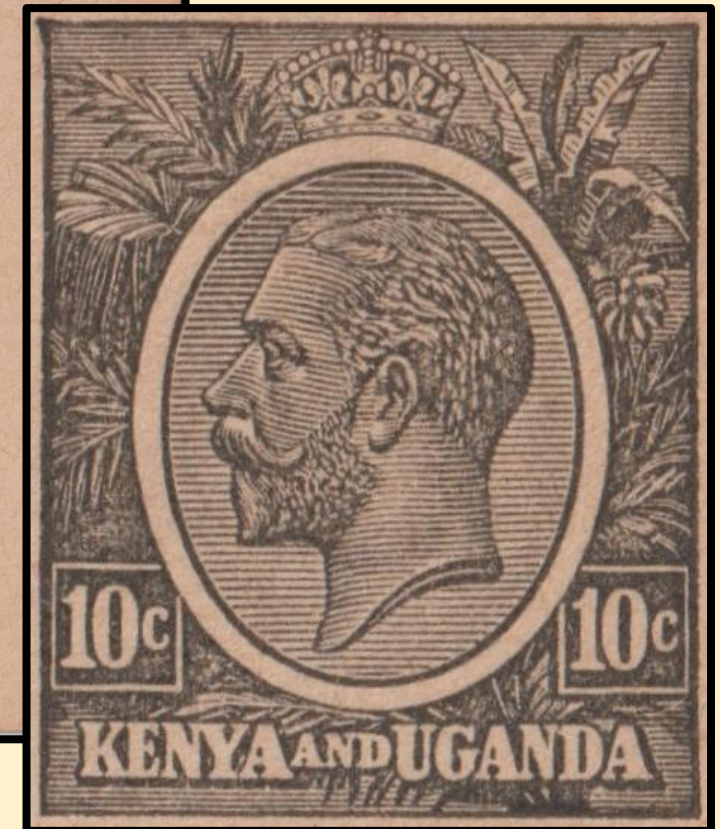


20c 'SPECIMEN' example with enlarged Indicum to show design.

Kenya & Uganda Postal Stationery - 10c Post Card - 1930.



Issued to comply with a
rate reduction in the
local rate.



‘Specimen’ example with the Indicium enlarged to show detail.

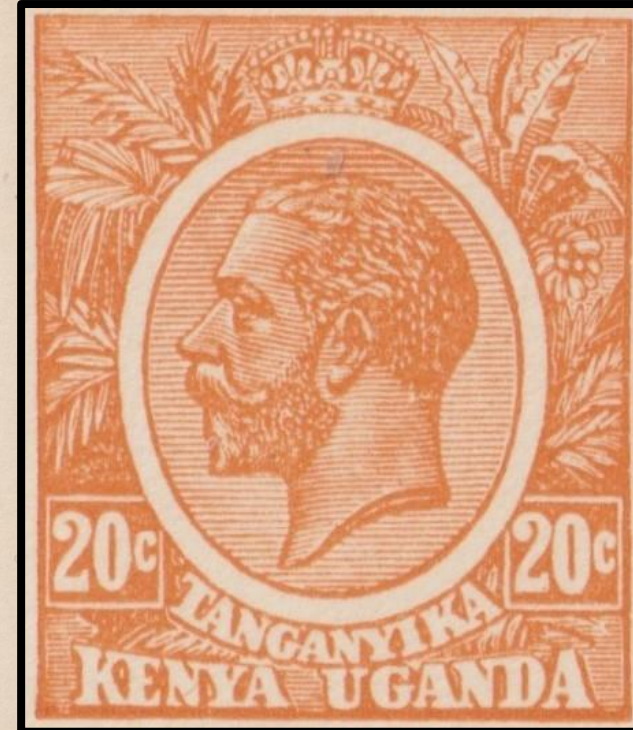
Note, An example shown on the East African Presentation on the EASC website is described as buff but seems yellowish compared to this example, but it may be just the scanning.

Kenya, Tanganyika & Uganda - Postal Stationery Letter Card - 1935.



LETTER CARD
KENYA, UGANDA, TANGANYIKA

SPECIMEN



IF USED FOR TRANSMISSION ABROAD THE ADDITIONAL POSTAGE REQUIRED
IS SUPPLIED BY MEANS OF ADHESIVE STAMPS

TO OPEN THE LETTER CARD. TEAR OFF THE EDGE AT THE PERFORATION

20c 'SPECIMEN' example with enlarged Indicium to show design
and instructions regarding 'extra postage' if used for overseas, on reverse.



REGISTERED LETTER.

THIS LETTER MUST BE GIVEN TO AN OFFICER OF THE POST OFFICE
TO BE REGISTERED, AND A RECEIPT OBTAINED FOR IT.
THE ADDRESS MUST BE WRITTEN ON THIS SIDE.

THE STAMPS
TO PAY
ADDITIONAL
POSTAGE, WHEN
REQUIRED,
MUST BE
PLACED HERE.

SPECIMEN



FEE PAID.

Printer's Imprint is under
the flap.

**'THOS. DE LA RUE &
CO. LTD'.**

Kenya, Uganda & Tanganyika – 20c Postal Stationery Envelope – Issued during 1935.



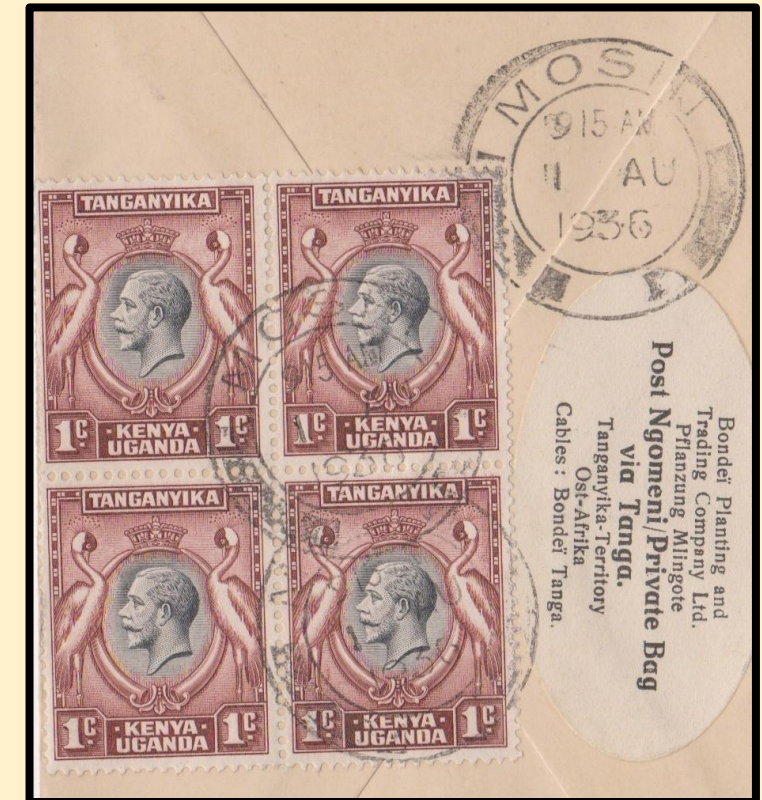
Nairobi 10/3/36.

Machine Cancellation
reads.

**‘ADDRESS
CORRESPONDENCE
FOR PRIVATE BOX
RENTERS TO THE
BOX NUMBER’.**

20c Envelope uprated with 30c Definitive Stamp to pay the Air Mail Rate from Nairobi to Folkestone, England.

1/74c to pay the double 75c per ½ ounce Air Mail Rate plus 30c Registration Fee (Cover was not registered).



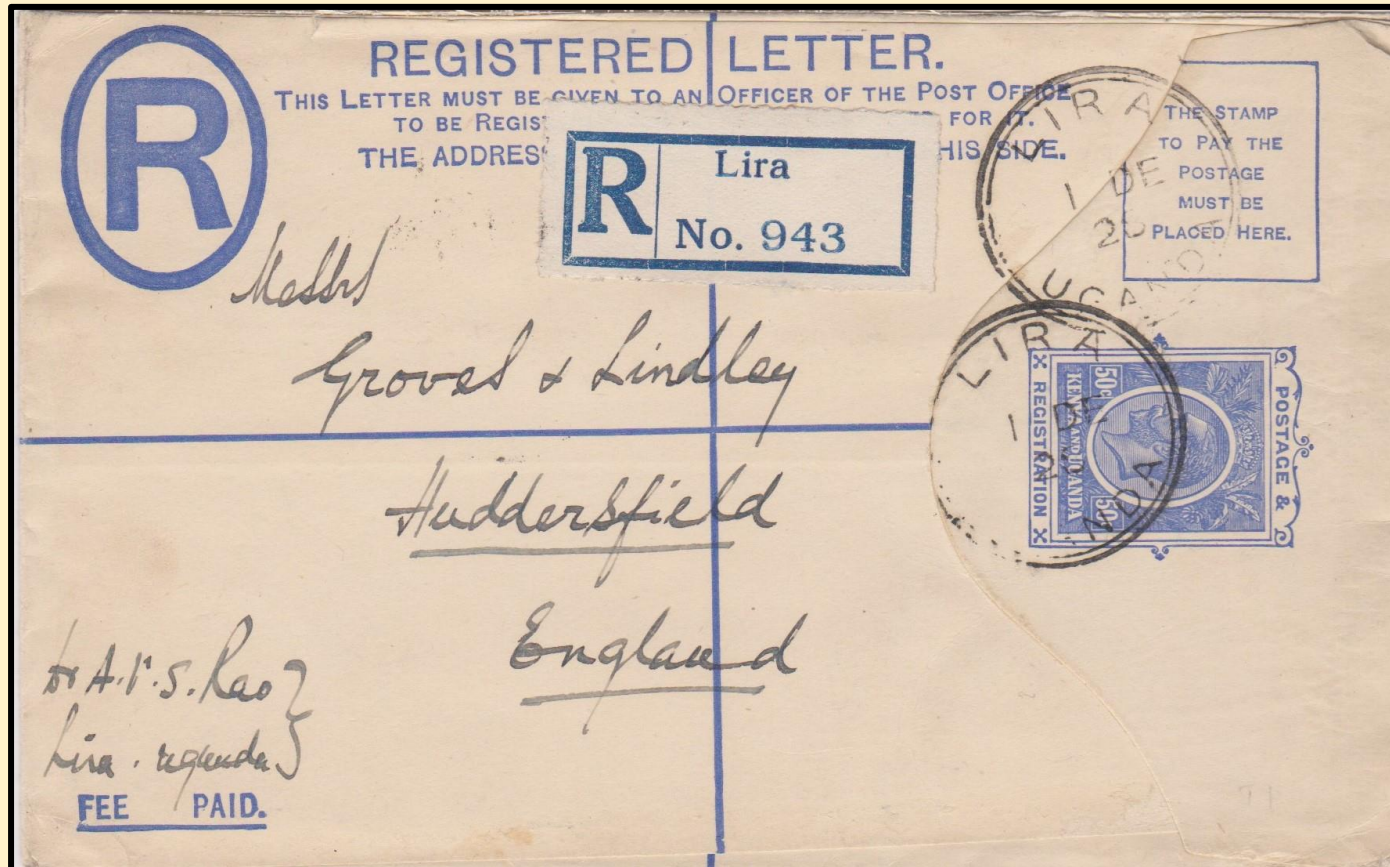
20c local Postal Stationary Envelope uprated to 1/74c. Tanga, 31/7/36 to Germany with Moshi transit to catch Flying Boat. Off loaded at Brindisi to finish journey by train as this was the quickest route.

‘Comedy of errors?’ The rate paid would cover double the foreign 75c per ½ ounce rate. The 20c on the Postal Stationary Envelope has been ignored and the 4c is irrelevant, the stamps have been used purely as seals (or philatelically for used copies).



Scans from reverse of cover.

50c Registered Letter From the Kenya & Uganda period used in Uganda 1928.



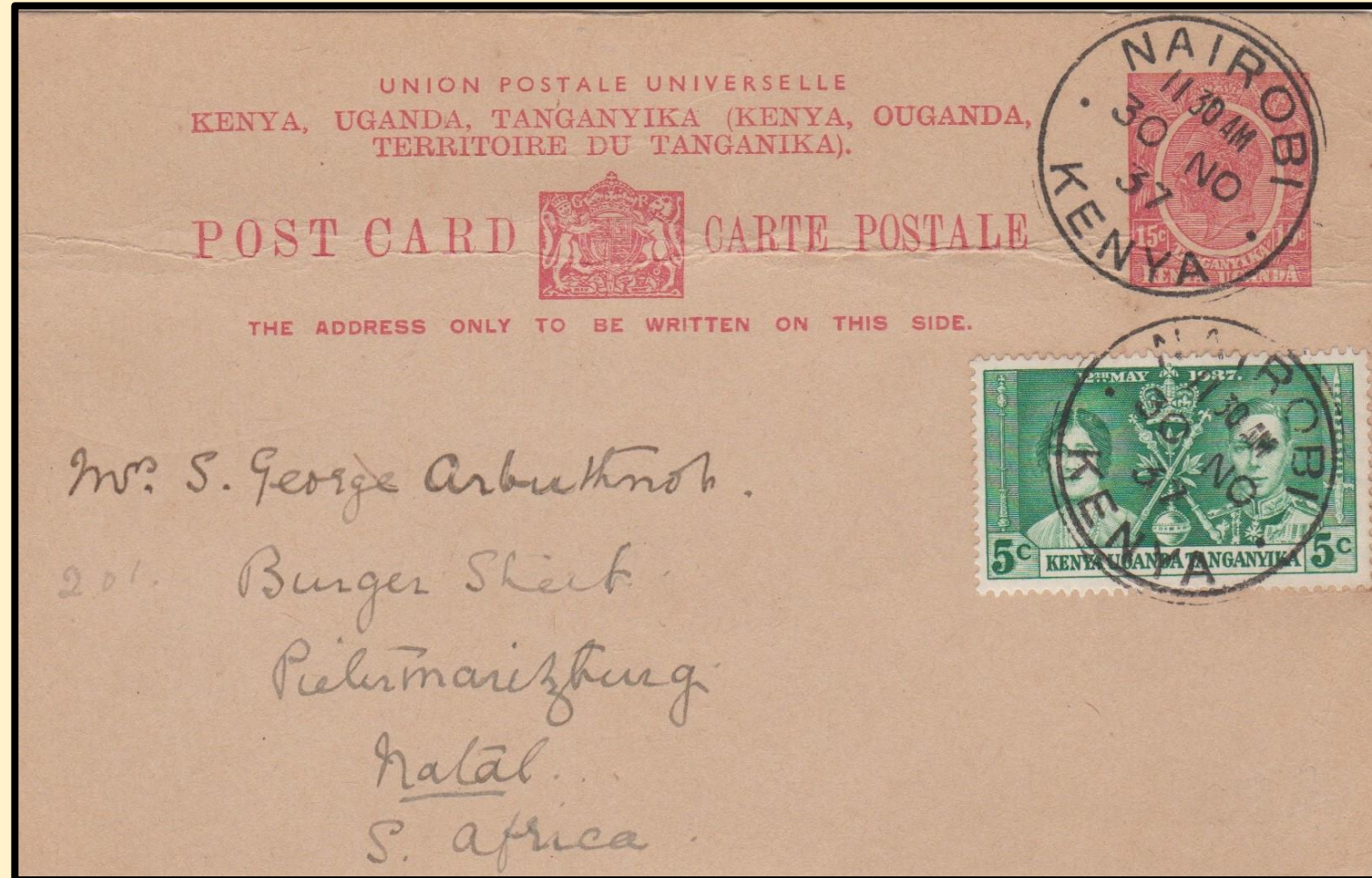
Lira 1/12/28.



Mombasa, Transit 8/12/28.

50c Air Letter, 30c. Registration Fee & 20c per ounce Empire Rate to Huddersfield, England.

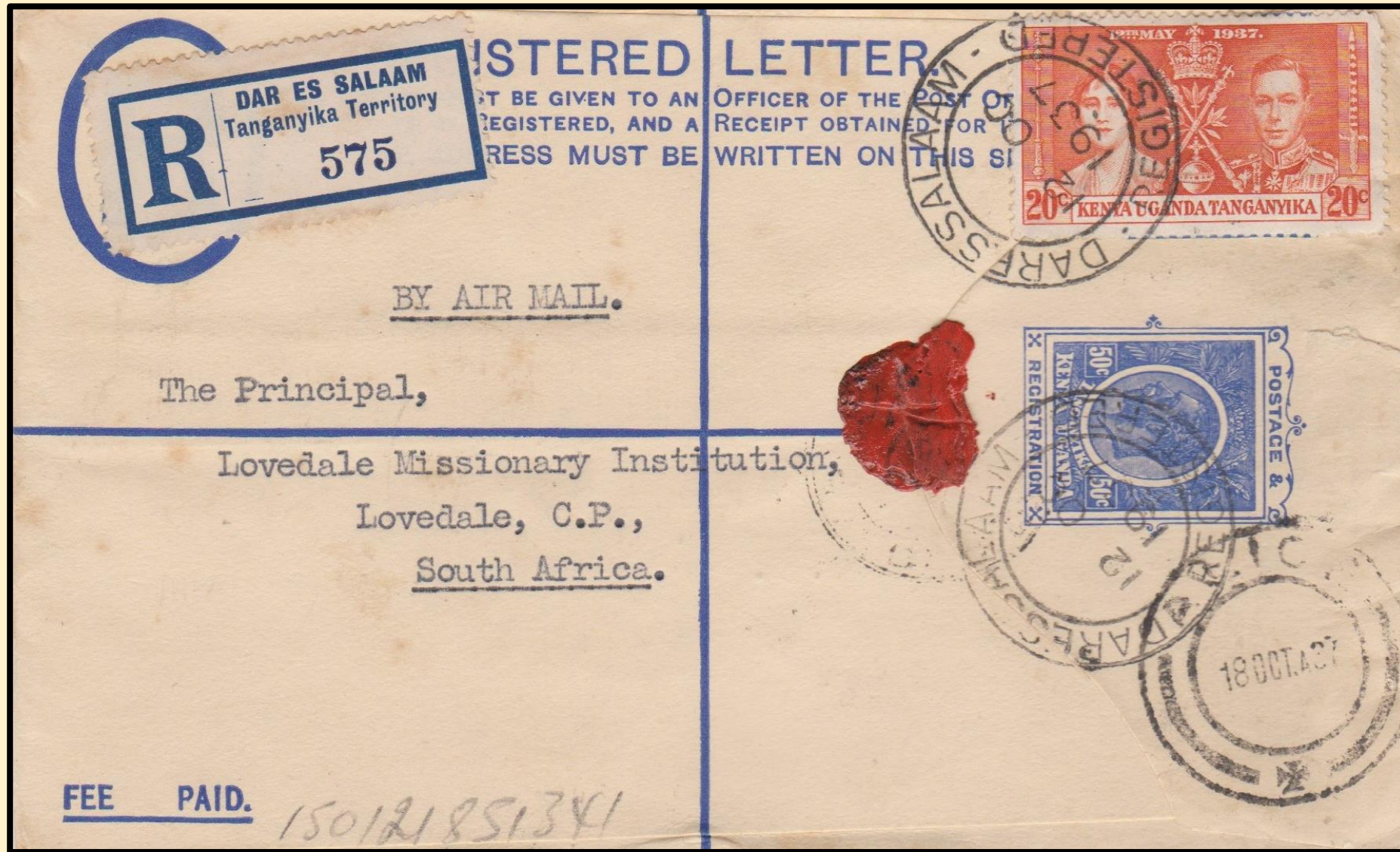
Late use of Kenya & Uganda 15c Postal Stationary Card with King George VI 5c Coronation stamp.



Nairobi.
30/11/37.

15c Kenya & Uganda Post Card uprated to 20c to pay the post card rate, surface to South Africa.

Late use of Kenya & Uganda 50c Registered Letter, uprated to 70c with 20c K.G. VI Coronation Stamp.



Dar-es-Salaam.
12/10/37.



Lovedale.
18/10/37.

50c Kenya & Uganda Registered Letter.

Uprated to 70c to pay the, 30c Registration Fee plus 40c to pay the double 20c surface rate to South Africa.

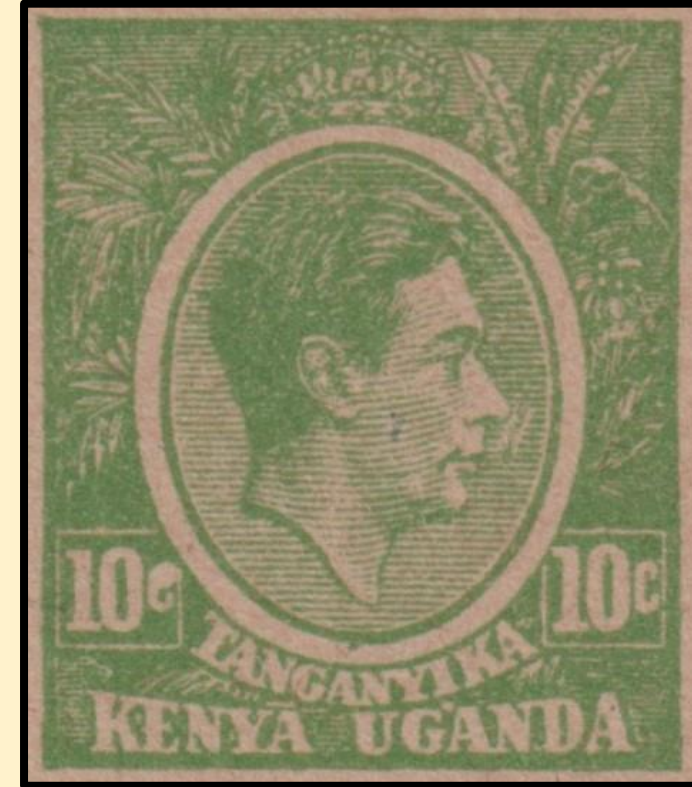
Kenya, Uganda & Tanganyika Postal Stationery 10c Green Post Card - 1950.

KENYA, UGANDA AND TANGANYIKA.

POST CARD



THE ADDRESS ONLY TO BE WRITTEN ON THIS SIDE.

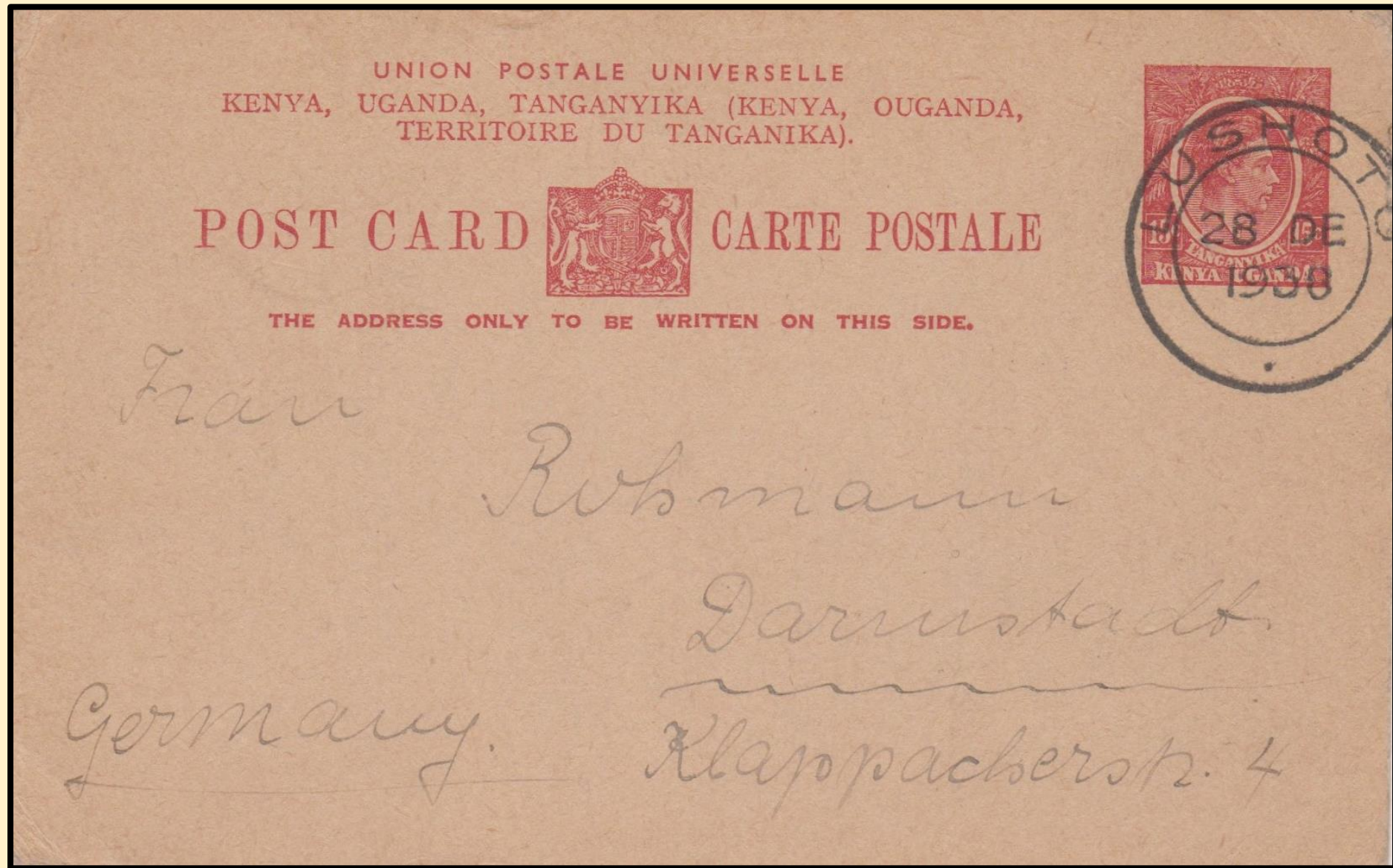


Enlarged indicium.

10c Green example with enlarged Indicium to show design.

15c Red Postal Stationary Postcard - 1938.

For Foreign use.



Lushoto,
Tanganyika.
28/12/38.

1938 15c Red – Lushoto to Germany.

10c Brown Postal Stationary Postcard - 1938.

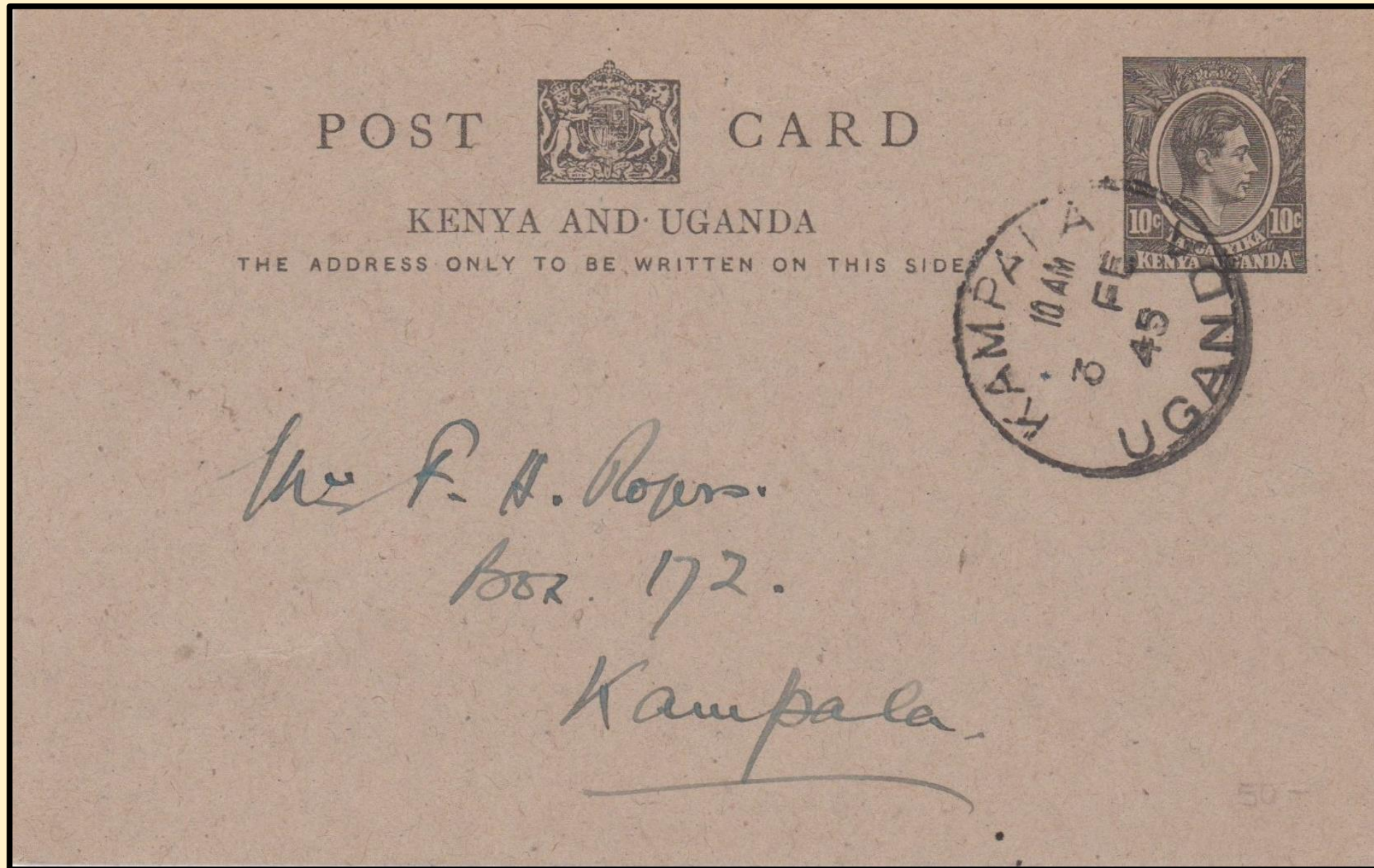


10c post card
for local use.

Naivasha,
Kenya.
7/7/38.

1938 10c Brown Post Card uprated to 15c, used from Naivasha to Huddersfield, England.

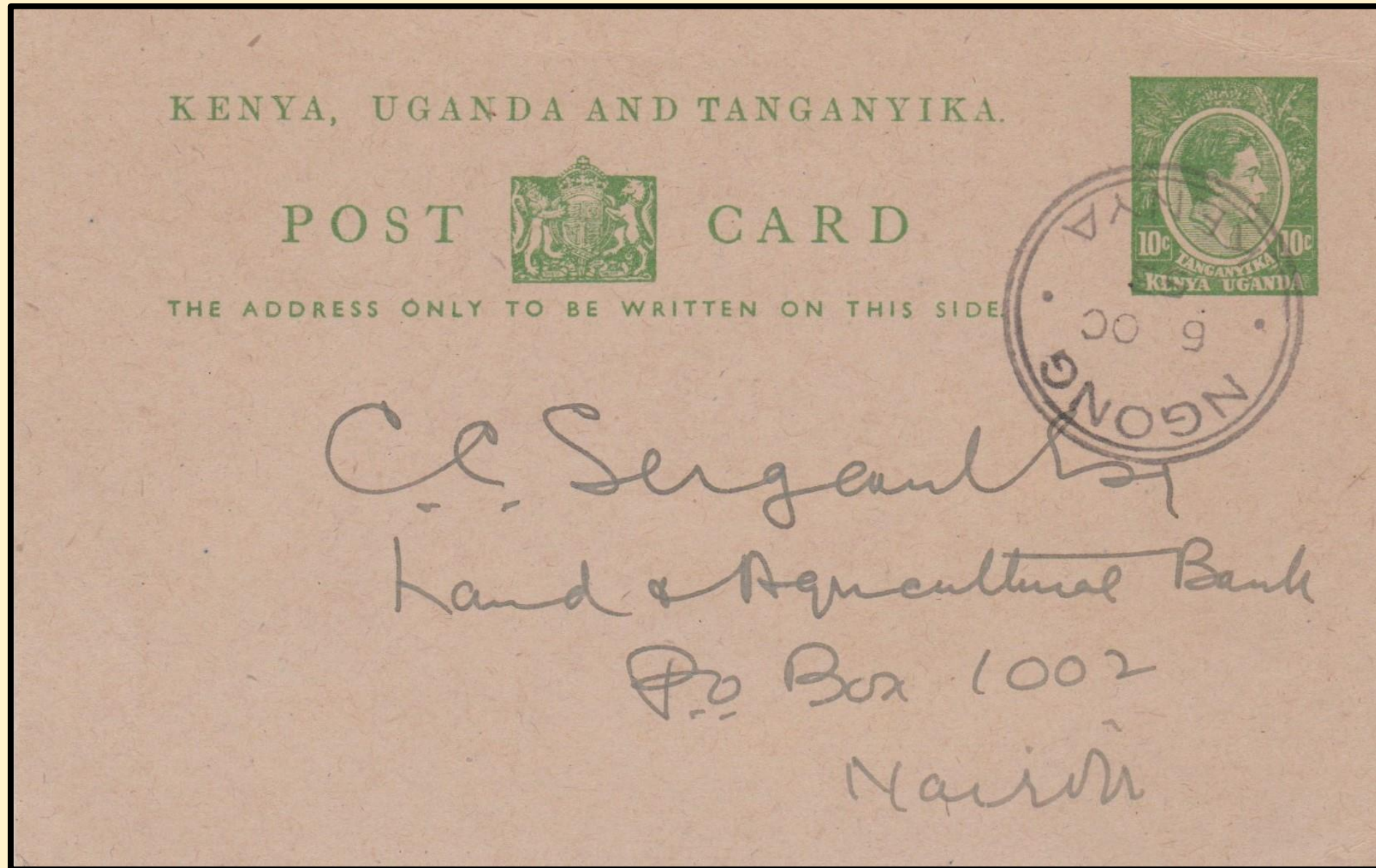
10c. Grey Postal Stationery Postcard – 1942.



Kampala,
Uganda.
3/2/45.

1942 10c Grey – Kampala, used locally in Kampala.

10c Green Postal Stationery Postcard - 1950.



Ngong,
Kenya.
6/10/53.

1950 10c Green used from Ngong to Nairobi, Kenya.

15c Postal Stationery Envelope – 1938.

15c Envelope,
Issued for local use.



Nairobi,
Kenya.
24/1/41

1938. 15c uprated to 20c. to pay the British Empire Surface Rate from Nairobi to Johannesburg, South Africa, censored on arrival.

20c Postal Stationery Envelope - 1938.

20c Envelope for
Foreign use.

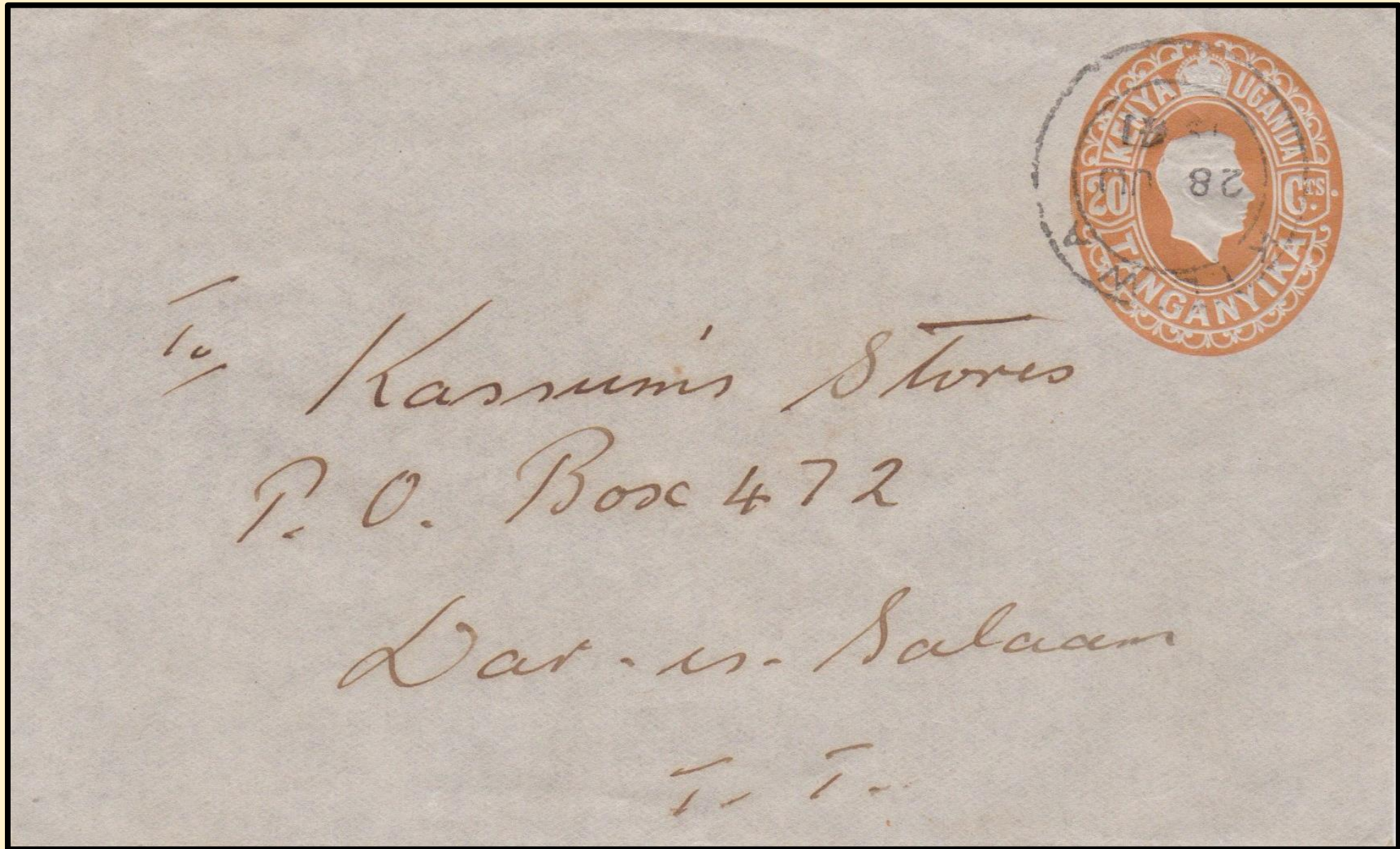


Kiambu,
Kenya.
2/6/53.

20c Late usage uprated to 40c on 'Coronation' souvenir cover used locally in Kiambu.

20c Postal Stationery Envelope – 1938.

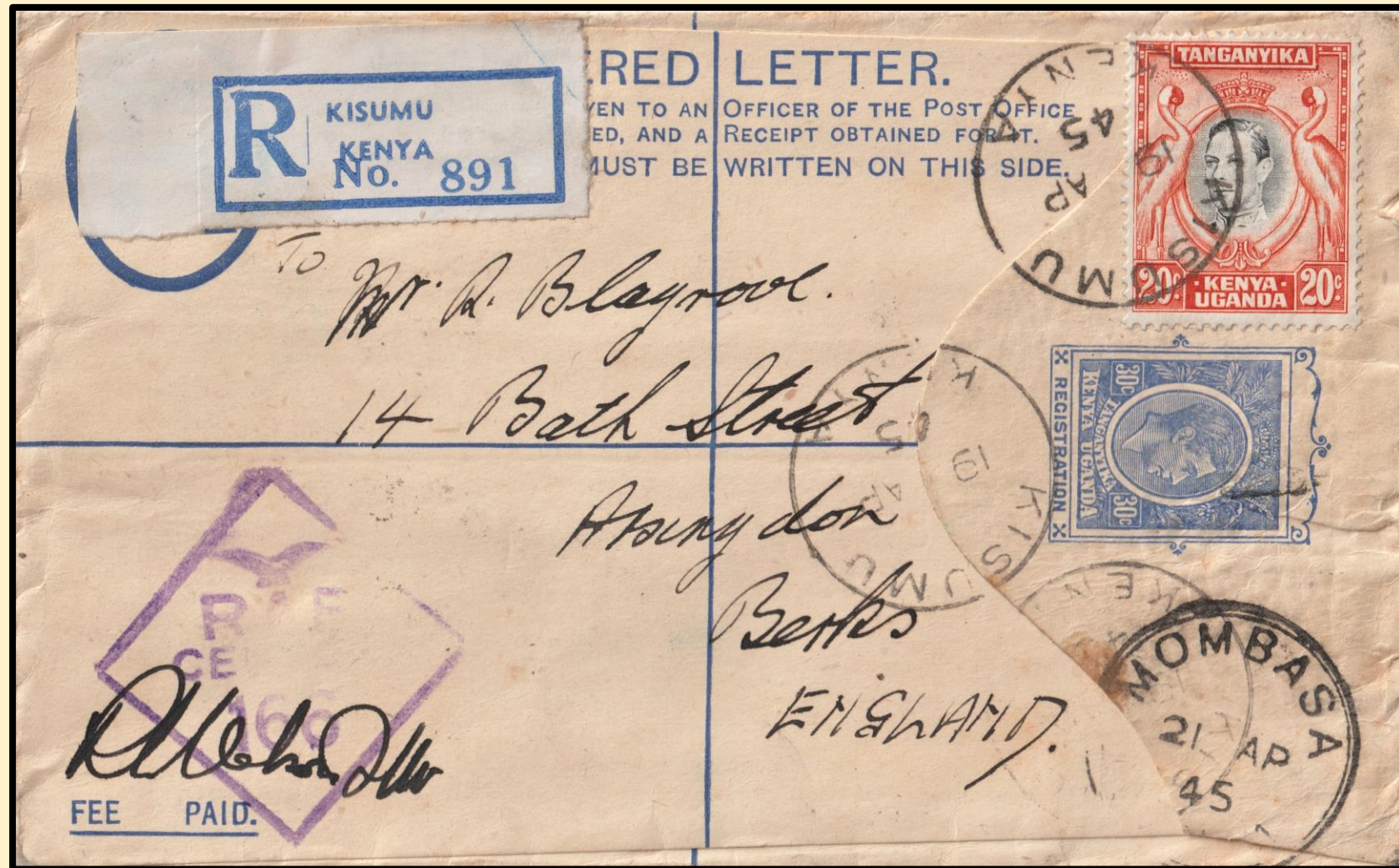
20c Envelope.
Issued for the
British
Empire
Surface Rate.



Kilwa,
Tanganyika.
28/6/44.

1938 20c Envelope, commercial, internal usage, Kilwa to Dar-es-Salaam.

Postal Stationery – 30c Registered letters Size ‘G’ (Indicium horizontal) – 1948.



20c on 30c, Censored, Registered Letter from R.A.F. Kisumu (On eastern shore of Lake Victoria) addressed to Abingdon, England. The 20c paid the Empire Surface Rate.
30c Registration Fee paid for by the envelope.



Kisumu – 19/4/45.



Mombasa – 21/4/45.
Transit.

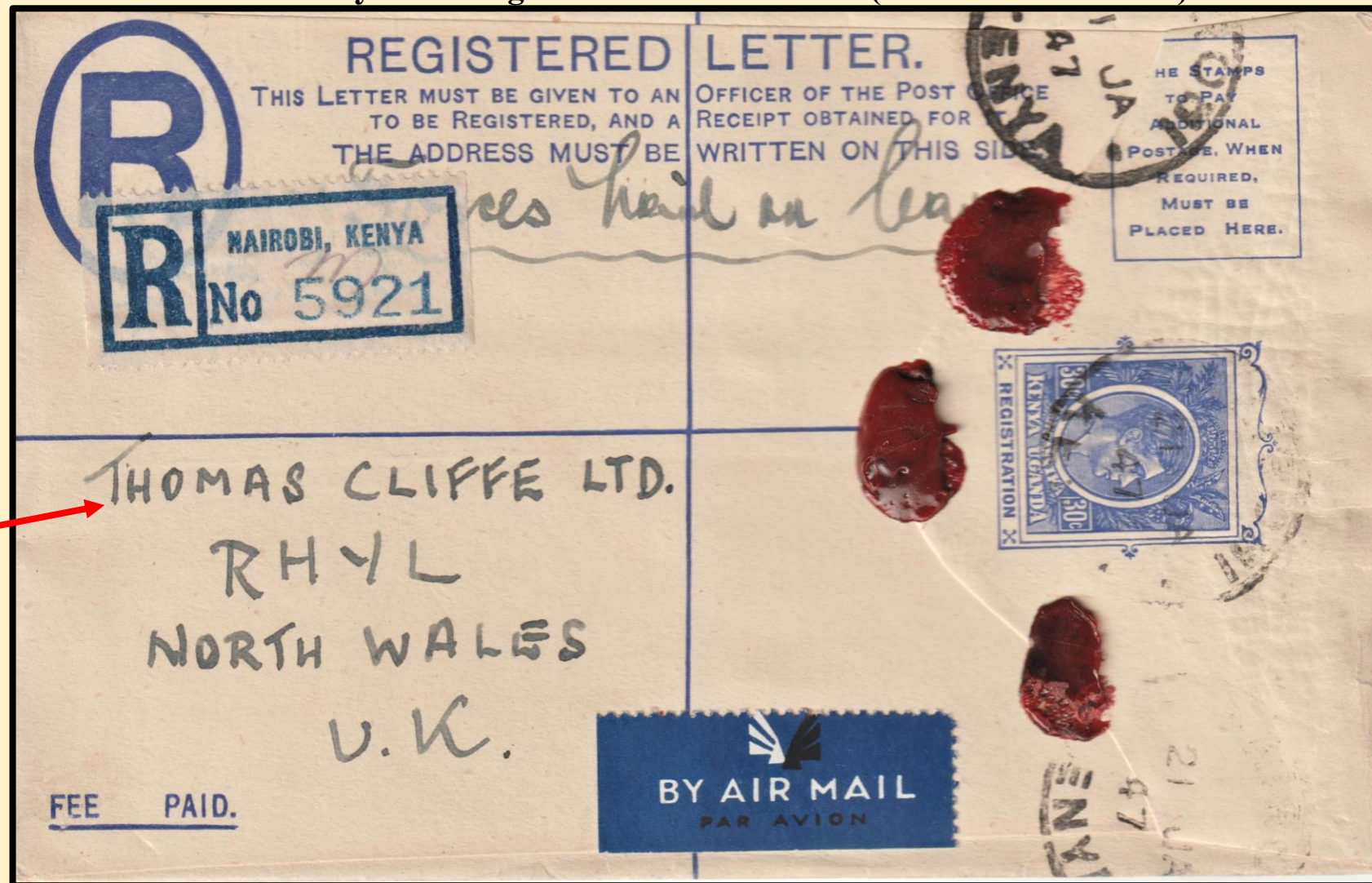


Kisumu Registration Label.



R.A.F. Censor's cachet No. 166.

Postal Stationery – 30c Registered letters Size ‘G’ (Indicium horizontal) – 1948.



Nairobi.
21/1/47.

30c Registered Letter (Size G) sent free of postage Nairobi to North Wales, but with no unit cachet to qualify it for free postage. Clearly marked ‘Forces Mail on leave’ it would appear that this was accepted by the post office otherwise, it should have been sent at the 1/3d per ½ ounce air mail rate.

East Africa, especially Nairobi and Mombasa was a common leave destination for British forces serving in Aden.

Postal Stationery – 30c Registered letters Size ‘G’ (Indicium horizontal) – 1948.



Turi 5/8/48.

30c, Registered Letter with horizontal indicium with 1/- added to pay the Air Mail Rate.

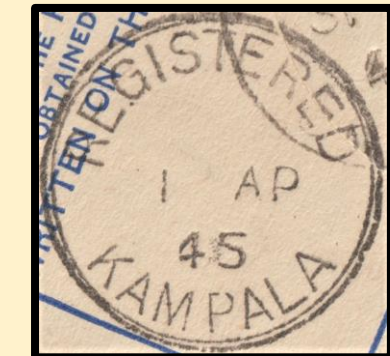
(It would appear there was a reduction in the Air Mail Rate during the 1947-48 period, but details are known to me).

Addressed to England and cancelled at Turi 5/8/48. Rubber hand stamp on formula R(egistration) Etiquette, Note low number - 4.

Postal Stationery – 30c Registered letters Size ‘G’ (Horizontal Indicium) - 1948.



Entebbe – 31/3/45.



Transit, Kampala – 1/4/45.

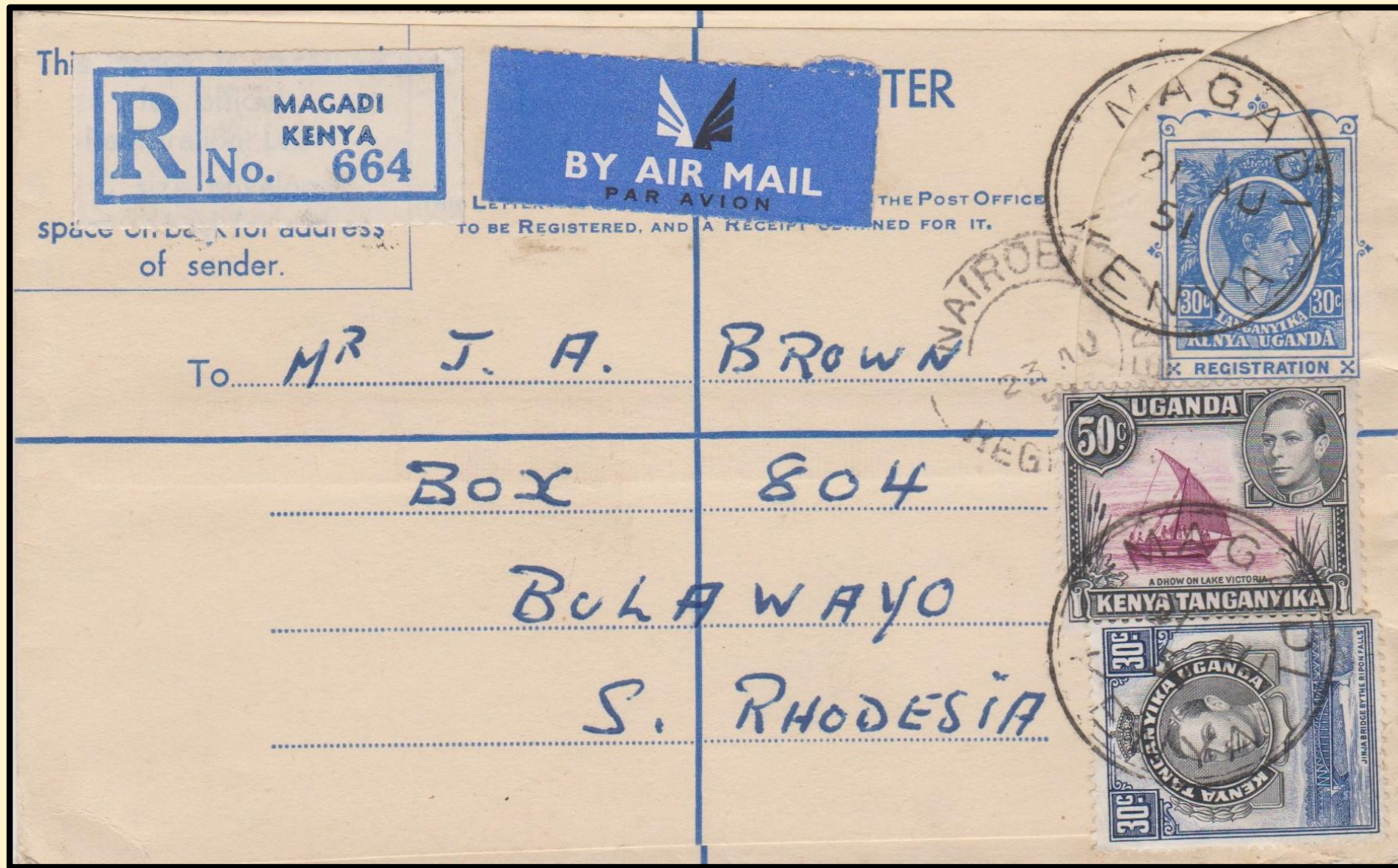


Kampala censor.
'N / Released / 9'.

1/30c per ½ ounce Air Mail, on a 30c Registered Letter, Censored and used commercially from Entebbe, Uganda to Pretoria, South Africa.

Van Schaik's was a supplier of books & art materials to Universities and the public.
Note, The recorded date of issue '1948' by the East African Study circle is clearly wrong!

Postal Stationery – 30c Registered letters Size ‘G’ (Vertical Indicium) Year not known .



Magadi – 21/8/51.



Nairobi - Transit - 23/8/51.



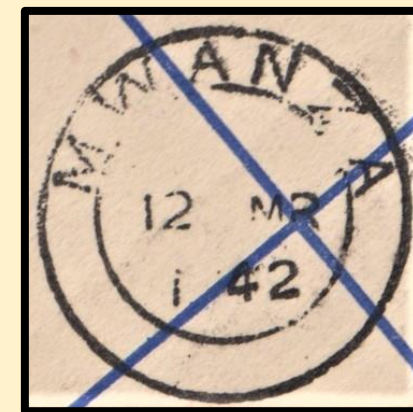
Receiving, Bulawayo - 25/8/51.

30c Registered Letter with ‘Vertical’ Registration Indicium (Year?),

(Does not appear to be recorded by the East African Study Circle)

with 80c per ½ ounce Air Mail Rate, from Magadi 21/8/51, addressed to Bulawayo, Southern Rhodesia.

Postal Stationery – 30c Registered letter Size ‘H’ (Horizontal Indiciu) Year not known .



Mwanza, Tanganyika.
12/3/42.



R6
Censor's
Cachet in
Daresalaam.

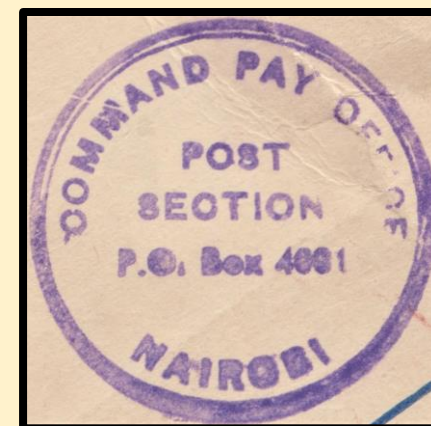
Dar-es-Salaam,
Tanganyika.
14/3/42.

3/90c on 30c Censored (R/6) Registered Letter, Size ‘H’, used commercially from Mwanza 12/3/42, addressed to Pretoria, South Africa. The 3/90 paid the triple rate at 1/30c per ½ ounce Air Mail, The 30c printed Indiciu on Registered Letter paid the Registration Fee. Note, The Dar-es-Salaam transit strike indicates that the cover was probably flown from there by flying boat on the Horseshoe Route.

Postal Stationery – 30c Registered letters Size ‘H’ (Horizontal Indicium) - 1948.



Nairobi – 16/12/50.



Cachet,
‘COMMAND PAY OFFICE –
POST SECTION - NAIROBI’.

30c Registered Letter (size H) with 1/20c postage being 20c forces Concession Rate at 20c per ounce or part thereof i.e., between 5-6 ounces. Note crumpled envelope on left signifying heavy weight.
The light green cachet was from H.M. Customs & Excise.

Postal Stationery – 30c Registered letter Size ‘H’ (Horizontal Indicium) Year not known .



3/90c to pay the Triple Rate at 1/30c per ½ ounce Air Mail on a Censored, Registered Military Cover from Kilindini, Mombasa, Kenya to Newcastle-on-Tyne, England.

Note. The ‘M.M.’ on the Registration Etiquette is thought to be ‘Maritime Mail’ and may be unrecorded.



Dumb Cancellation – Kilindini
5/11/44.



Royal Navy P. B. Censor.



British Maritime Mail,
Receiving strike.

Postal Stationery – 30c Registered letter Size ‘H’ (Horizontal Indicium) Year not known .



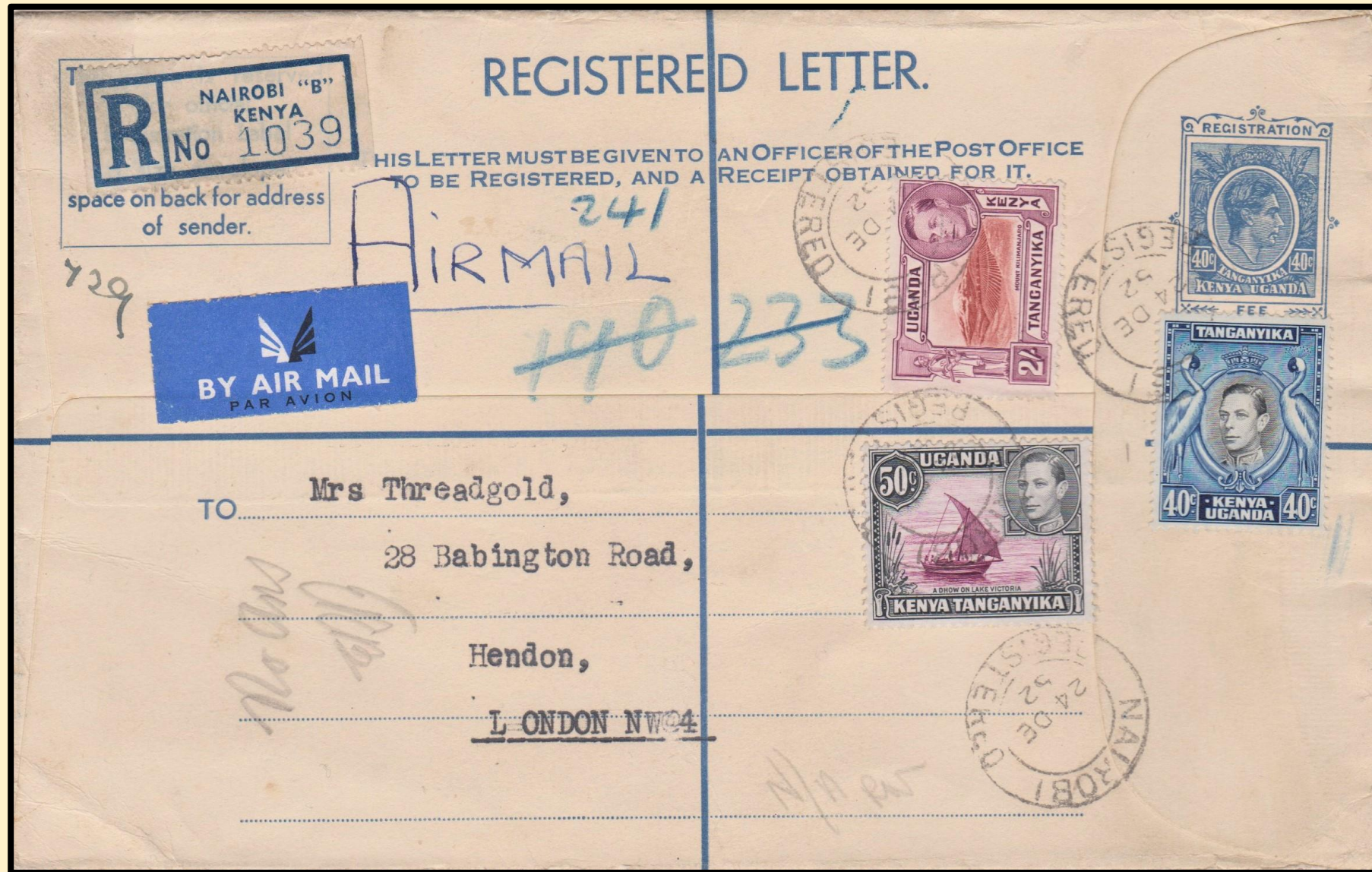
Shinyanga – Tanganyika – 16/7/51.



Reverse of cover showing 90c paid and Dar-es-Salaam receiving strike 19/7/51.

30c Registered Letter, Size ‘H’ uprated by 90c to pay 30c Inland Letter Rate and 60c Insurance with ‘Insured Label’ attached.
 . Posted in Shinyanga 16/7/51, addressed to Dar-es-Salaam
(Note, formula ‘R’ Etiquette with ‘Shinyanga’ handstamp, the use of a Formula Registration Label, indicates a small post office).

Postal Stationary – 40c Registered Letter (Size ‘H’) – 1952.



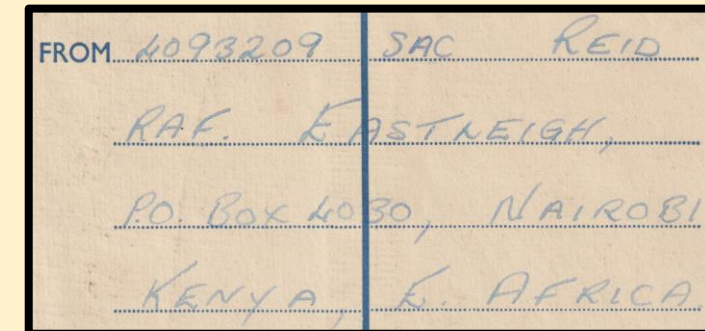
Nairobi,
Registered.
24/12/52.

40c Registered letter with 2/90c, making a total of 3/30c, Air Mail from Nairobi to London, England.
The Registration Fee had been increased to 60c, leaving 2/70 to pay the double Air Mal Rate at 1/30c per ½ ounce, leaving 10c overpaid.

Postal Stationary – 40c Registered Letter (Size ‘H’) – 1952.



Nairobi - Registered - 9/8/54.



Sender & Address.

An SAC Reid at R.A.F. Eastleigh.

80c on a 40c Registered Letter from Nairobi to Aberdeen, Scotland. (Contained 1 pair nylon stockings). On the face of it a strange Postal Rate as the Registration fee had been increased to 60c and the Empire surface rate was 20c per 1 ounce stage, but this cover is AIR MAIL. The answer is in the sender's address – R.A.F. Eastleigh. The cover was posted on the camp at the Forces Concession Rate of 20c per ounce Air Mail and forwarded to Nairobi G.P.O. for Registration. Rate was 60c Registration and a Triple Rate at the Forces Concession Rate at 20c per oz.

Registered 40c King George VI Registered Letter (Size 'K') – c1952 ?

This space is reserved
for official
Registration Label
K size envelope
space on back for address
of sender



REGISTERED LETTER.

THIS LETTER MUST BE GIVEN TO AN OFFICER OF THE POST OFFICE
TO BE REGISTERED, AND A RECEIPT OBTAINED FOR IT.



Ol Kalou- Kenya.
13/12/54.

TO *Mie Schauman en penilliers*

P/O Box 21

Lydenburg

Transvaal

(South Africa)



Nairobi - 14/12/54.
Registered.
Transit Strike.



40c Registered Letter uprated by 2/20c to make 2/60c to pay the Registration Fee of 60c plus 5 x 80c per ½ ounce Air Mail Rate to Lydenburg, South Africa.

Posted at Ol Kalou 13/12/54 and addressed to South Africa. The cover originally held Legal Documents.

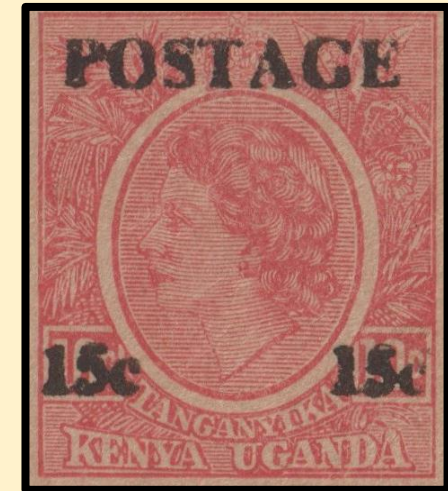
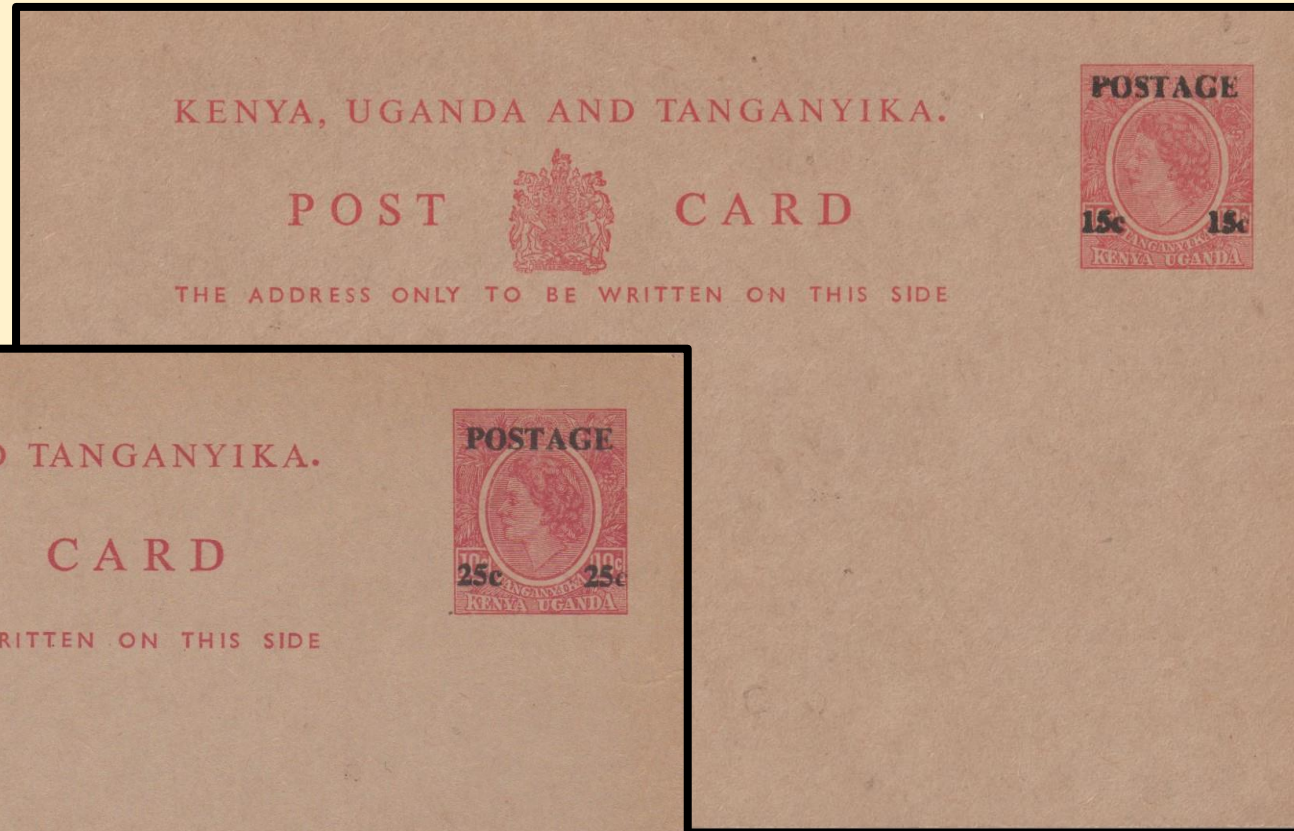
Halfway There.



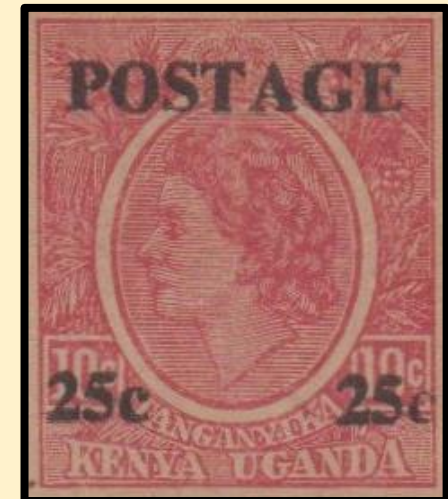
Prince Philip and Princess Elizabeth went to Kenya on Holiday, they owned a house in Sagana Village near Nyeri which had been given to them by the people of Kenya as a wedding present, while there they visited 'Tree Tops' at the Outspan Hotel in Nyeri to view game. That night 6/2/52 King George VI died, and Princess Elizabeth became Queen Elizabeth II.

Postal Stationery – 10c & 25c surcharge on 10c Postcard – 1958.

The original 10c Post Card was issued in 1956.



Enlarged Indicium with the 15c surcharge.



Enlarged Indicium with the 25c surcharge.

There are two types of 15c. Stamps.

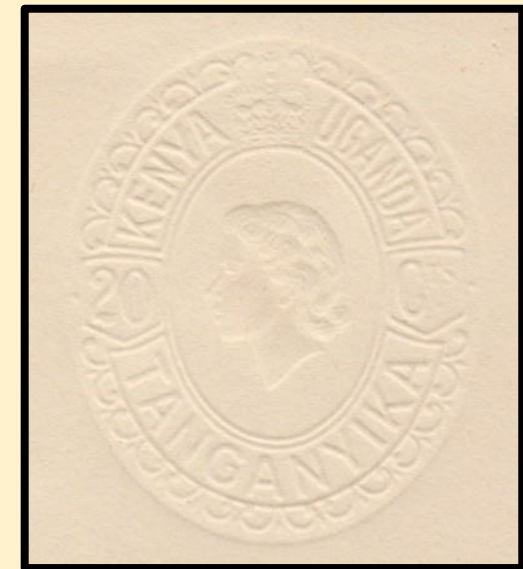
10mm & 12mm between 15c & 15c.

The original value of the postcard for local use was 10c, this was overprinted to meet the new 15c for Inland Post Card Rate and 25c for the new Foreign Post Card Rate.

20c Postal Stationery Envelope – 1954.



Enlarged Indicium.



Enlarged Indicium
from second '**Albino**' Envelope

Postal Stationery came in 20c (local) & 30c. (overseas and later for local Inland Letter Rate). There were 2 sizes, with the 30c being with both blue and cream paper. Shown as an inset (envelope complete) is a blown-up view of an Albino where the cover missed the ink pad.

20c Postal Stationery Envelope – 1954.



Nairobi,
19/6/59

1/10c to uprate to 1/30c to pay the per ½ ounce Air Mail Rate to England, on a light buff postal stationery 20c envelope.
Cancelled with the Machine Cancellation – ‘**Have You Taken Out Your Radio Licence Yet?**’. (Television only introduced early 1960’s).

20c Postal Stationery Envelope – 1954.

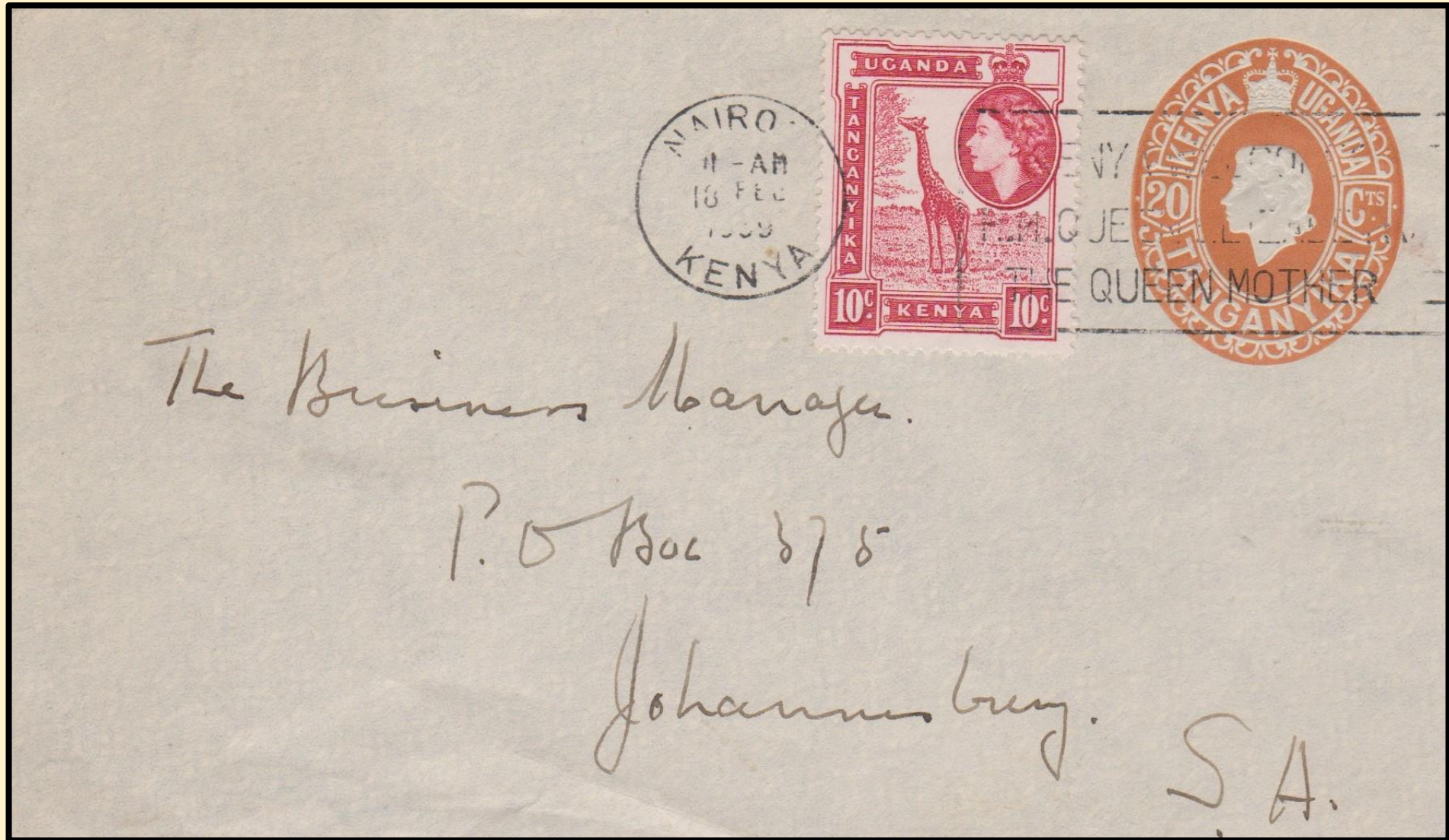


The second size on grey paper.



As sold by the post office when the
Inland Letter Rate was increased
from 20c to 30c. 1080/61?

20c Postal Stationery Envelope – 1954.



Nairobi.
18/2/59.

10c to uprate 20c Postal Stationery Envelope, to pay the 30c surface rate from Nairobi to Johannesburg, South Africa.
Cancelled with machine cancellation - **'KENYA WELCOMES THE QUEEN MOTHER'**.

30c Postal Stationery Envelope – 1961.

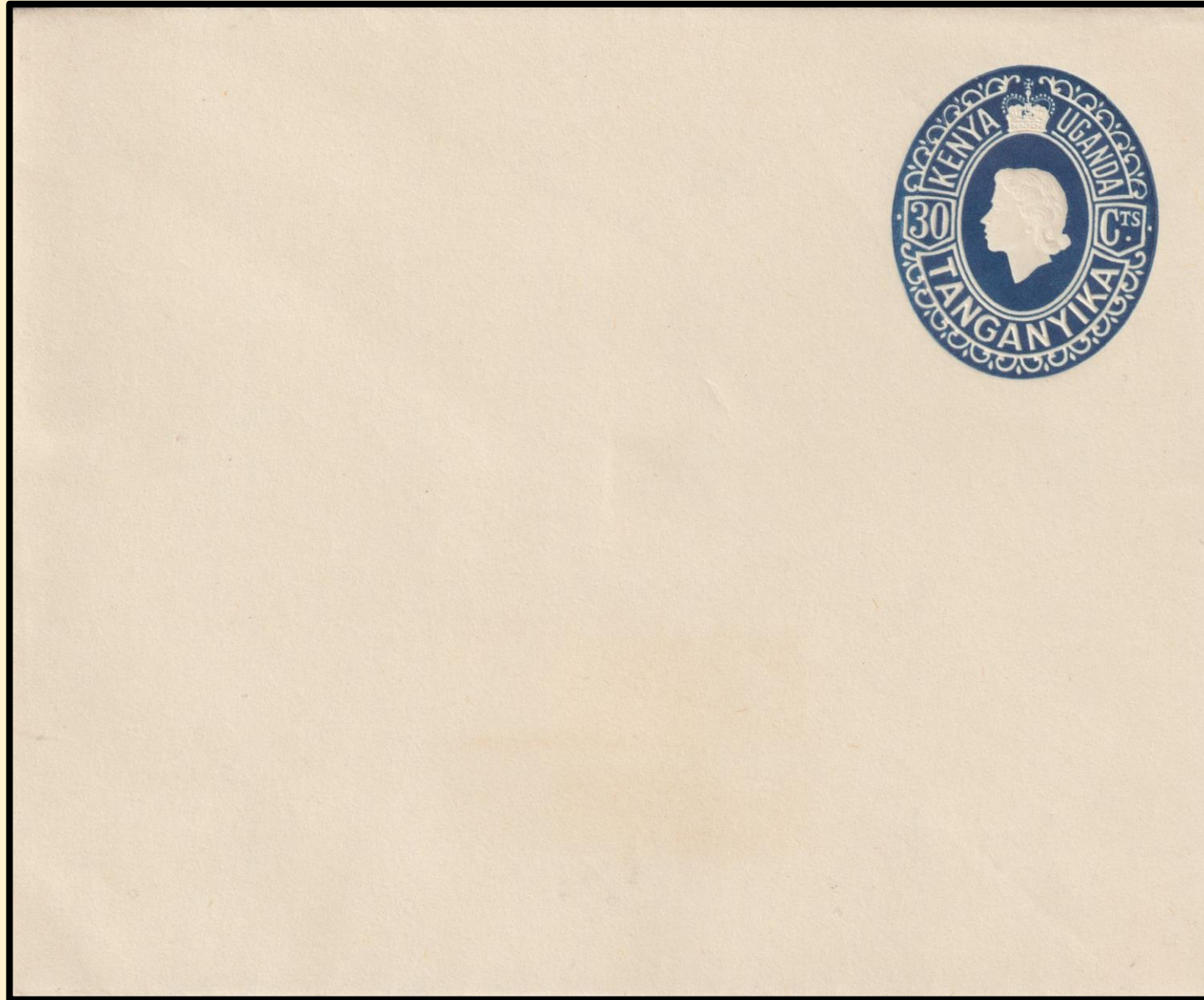


Enlarged Indicium.

Postal Stationery came in 20c (local) & 30c. (overseas and later for local Inland Letter Rate).

Sizes were varied with the 30c being with both grey-blue and cream paper.

30c Postal Stationery Envelope – 1961.



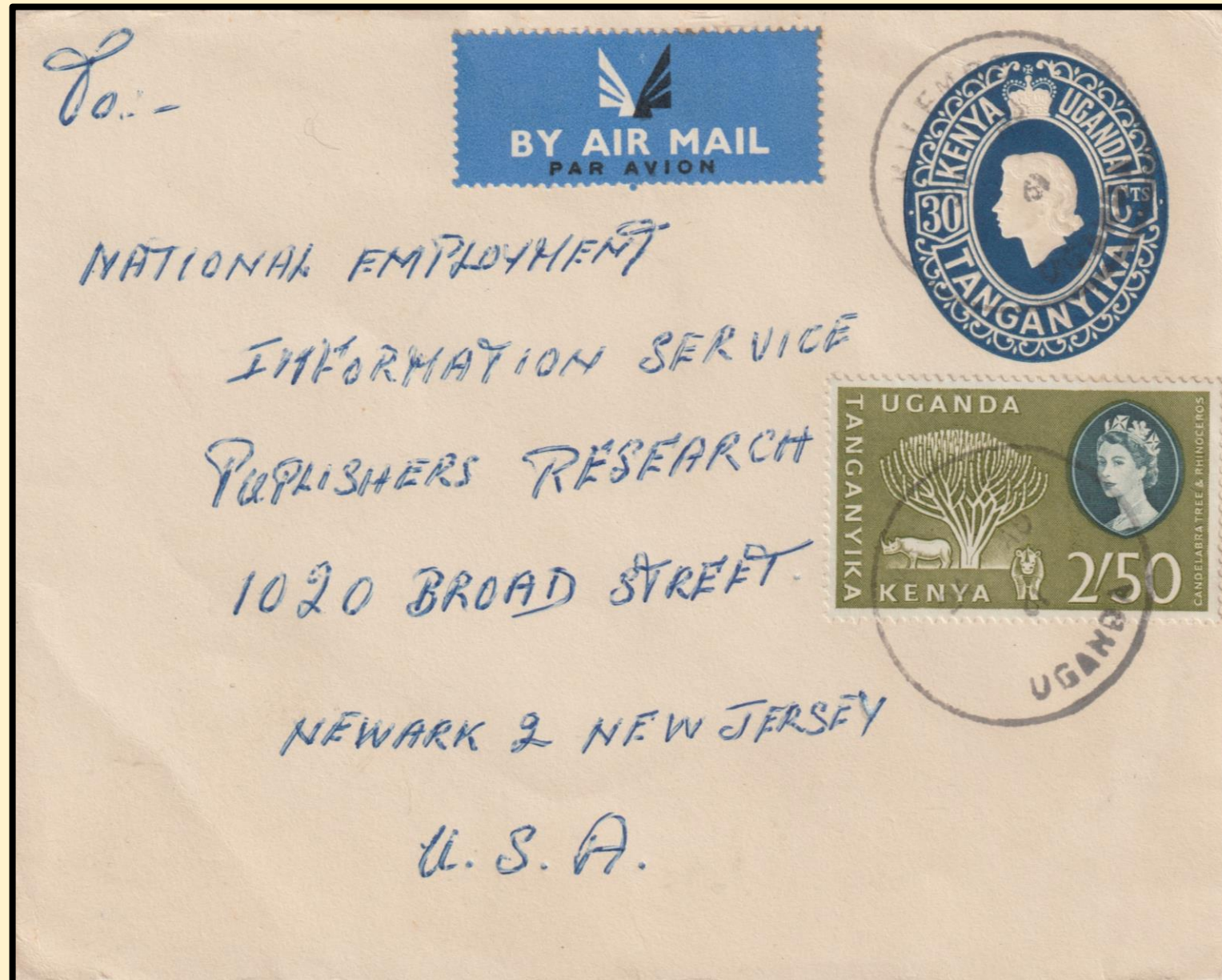
The second size printed on 'off white' paper.



‘On Piece’ - Nanyuki – 18/12/62.

This example is printed in a much darker blue indicating that there may have been at least two or more printings/issues.

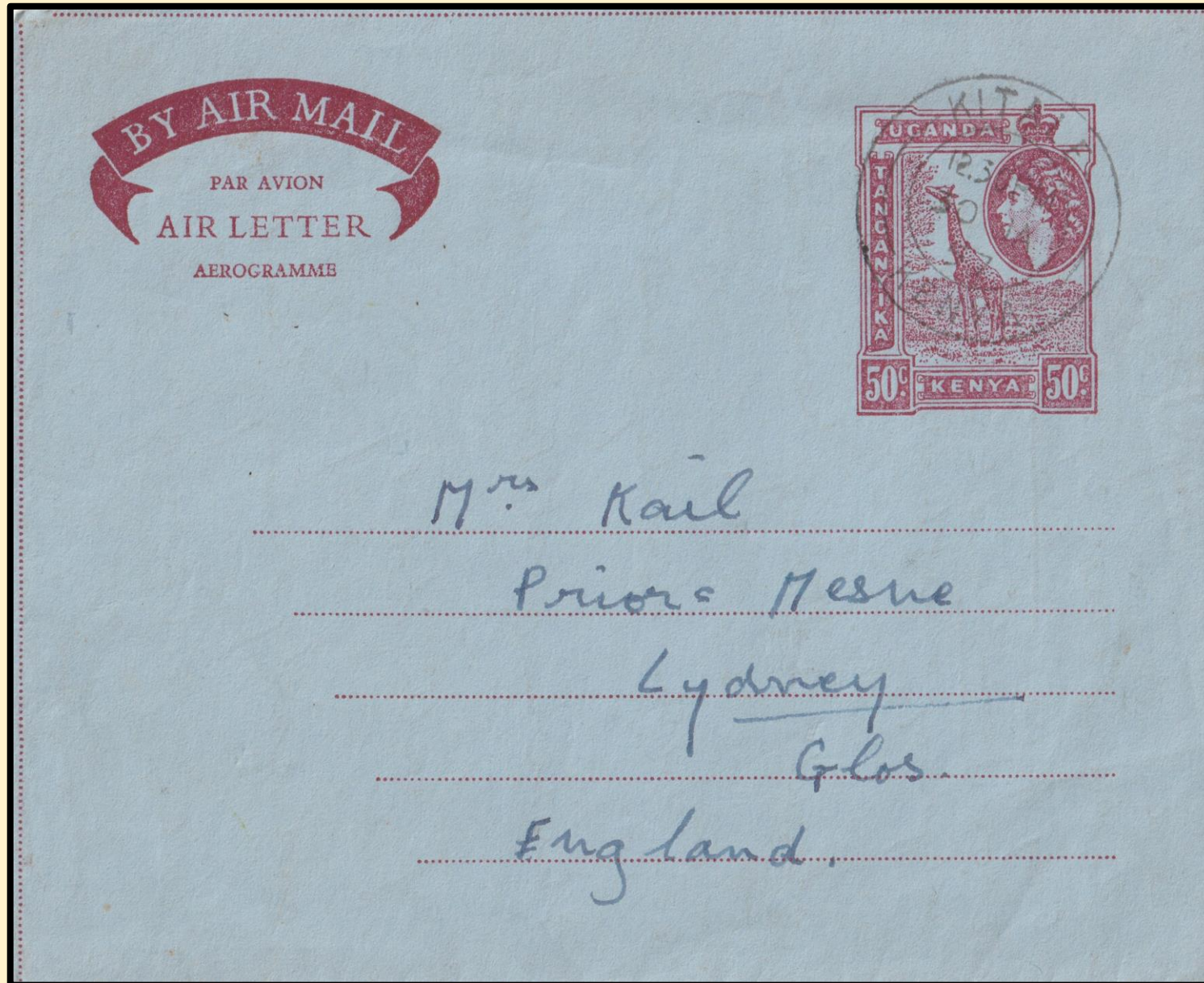
30c Postal Stationery Envelope – 1961.



Kilembe.
Uganda.
24/8/61.

30c Postal Stationery Envelope with additional 2/50c to pay the Air Mail Rate from Kilembe, Uganda to Newark. United States of America.
The 30c on the cover has been ignored as the 2/50c is the correct Air Mail Rate. .

Postal Stationery – 50c Air Letter – 1954.



Enlarged indicium with cancellation,
Kitale, Kenya – 30/1/57.

50c air Letter from Kitale to Lydney, England.

The End.

British rule in East Africa came to an end on 12/12/63 when Kenya the last of the three countries became independent.

