

**SUMMER POSTAL AUCTION**  
**CLOSING DATE**  
**MIDDAY - MONDAY - 24 AUGUST 2020**

John Philpott's obituary appears in this issue. He had a huge collection and was keen to offer the more specialist bits through the SACS. Some very fine material of his (and other vendors) appears in Nick Arrow's auction which has had to be postponed but will be run at the first opportunity of holding a public auction. To fill the gap and give you all something to admire and join in with during lockdown this auction features 131 lots from John's collection all suitable for sale postally. They are all estimated on a "priced to sell" basis so let's see if we can get 100% sales!

Please note that I am running this auction as a "one off" and not Nick Arrow. The lots are liberally illustrated and I have scans of all so any queries, or requests, should be directed through me. So, come on, let's do John proud!

**bids and queries accepted by email (ajbmhg@btinternet.com)**  
**or snail mail :** Tony Howgrave-Graham, The Cottage, Barford Lane,  
Downton, Salisbury, Wilts. SP5 3QA

**King's Heads**

	E/V
1. ½d. plate 1, top control single, mounted in margin only, scarce .....	£25-30
2. plate No. singles:- top - ½d pl.5, 1d pls.4&6, 3d blk & red, 3d blue & 1/3 and bottom - ½d pls.5&6, 1d pls.6&7, 2d pls.1&2 and 4d. fine mm & um. (13) .....	£40-50
3. ½d plate 5:- top B4 & bottom left corner B4 with control No.s : B4 with central gutter & ornament from btm left corner btm left pane : also a scarce top right corner control B4 with <b>reversed perforations</b> . All fine mm or um (ex marginal crease on one) .....	£25-30
4. 1d Plt.1or2 : top left corner B4 with no control No. - mounted margin only, faint crease affecting bottom right stamp but a rare item .....	£80-90
5. 1½d, plate 2, all 4 corner pairs, mm, nice .....	£20-25
6. 2½d bottom left corner control strip of 3, stamps um .....	£6-8
7. 2½d bottom left & right corner control B4's, fine lmm .....	£16-20
8. 4d inverted watermark, top control single, stamp um .....	£6-10
9. 1/- bottom right corner control B4, mm (marginal thin) .....	£18-20
10. 2/6 top control single, stamp um (marginal repair) .....	£20-25
11. 5/- light blue, bottom control single, stamp um .....	£50-60
12. 2½d & 4d horizontal interpanneau pairs, scarce, lmm .....	£22-26
13. 6d B4 with gutter margin at left showing missing jubilee line, top pair mm, bottom um - a nice Item .....	£50-55
14. 5/- deep blue a fine um marginal pair (cat £240) .....	£70-80
15. £1 pale olive green & red, fine lmm, cat £850 .....	£180-220
16. ½d, 2½d, 6d & 1/- overprinted SPECIMEN, fine lmm .....	£22-25
17. ½d & 1½d coil strips of 4, um, 1½d with join .....	£17-20
18. 1925 AIR - a set of forgeries in B4's, unmounted mint .....	£50-60

**1926-30 London Pictorials**

19. 1926 London ½d - top left ¼ sheet of 60, fine mint (includes varieties and 3 extra perf holes in left margin) .....	£27-30
20. 1 May 1926 6d superb rt marginal B4 cancelled 1st day at Sea Point .....	£30-35
21. 2d perf 14 with <b>inverted watermark</b> , fine mm, cat £850 .....	£220-280
22. 2d perf 14 inscriptional pairs from left & right panes, fine mm .....	£20-24
23. 2d Gp.II (perf down), bottom left marginal B4 from the right pane and an inscriptional B4 (also rt pane), fine um .....	£45-55
24. 2d with <b>split 2 variety</b> :- p.14x13½ up and down, mm (the first is scarce, cat "400" in the handbook, latter cat £150 in SG) .....	£80-100
25. 2d with <b>split 2 variety</b> , perf up (scarce), used (also a repaired perf down pair) .....	£70-80
26. Gp II ( perf 14x13½ down) top & bottom marginal pairs of the 2d & 3d and a top right corner pair of 1/- good lot, cat £360 unmounted mint .....	£100-120
27. 3d Gp.II(down) fine (ex very slight even toning) bottom right corner B4 from the left pane. Cat £160 .....	£22-26

28. 3d Gp.II, fine inscriptional B4, unmounted mint.....	£45-50
29. 3d perf 14 (Gp.I), inscriptional pair, unmounted mint.....	£10-12
30. 4d Gp.I, perf 14, inscriptional pair, unmounted mint .....	£18-20
31. 4d Gp.III, perf 14x13½ (up), inscriptional B4 (top pair only mounted).....	£32-35
32. 1/- Gp.I, perf 14, inscriptional pair, unmounted mint.....	£12-15
33. 1/- Gp.III (perf up) inscriptional pair, mm.....	£22-25
34. 2/6 perf.14, bottom left corner pair, stamps um (faint crease edge of lt stamp).....	£35-40
35. 5/- perf 14, bottom right corner pair, stamps um, gum creasing, (thin marg edge).....	£60-70
36. 2d perf 14 pair, Gp.II pair & B4 (different plates), fine cds used .....	£20-25
37. Used inscriptional pairs for 2d & 3d (both Gp.II, perf down) and inscriptional B4s of Gp.II and Gp.III 1/- (margin of former shortened) - v high cat .....	£80-100
38. 10/- perf.14, fu .....	£35-50
39. 10/- perf.14x13½ (down), used, faint horizontal crease .....	£35-50

### **Pretoria typographed**

40. ½d superb bottom right corner B12 (2x6), Plate 1 control, um.....	£15-18
41. ½d 1948 reprint : fine mm reconstructed miniature sheet (all 4 corners, top & bottom centre B4s, arrow B4's & a B4 for the middle!).....	£18-25
42. 1948 ½d reprint bottom half sheet of 120, fine mint, nicely presented .....	£30-35
43. 1d <b>offsets</b> :- B4 with partial offsets of the complete design and vertical pair with fine offsets of a vignette and a half, um.....	£35-40
44. 1d (Plt.3) left arrow B6 and right arrow strip of 3 doubly perforated, fine mm .....	£20-25
45. 1d (Plt.3) top right corner B6 and right arrow B4 both doubly perfd. Mm .....	£32-36
46. 1d (plt.3) fine right marginal B6 with double perfs. Um .....	£28-32
47. 1d (Plt.3) fine right marginal B6 <b>triple perforations</b> , lmm, scarce .....	£50-60

### **1935 Silver Jubilee**

48. superb marginal B6's of all values, all showing stage 1 <b>cleft skulls</b> and tagged ears, scratch on 1d also present, m margins only, scarce so fine .....	£70-80
49. 1d marginal B6 with stage 3 <b>cleft skull</b> , stage 5 scratches and tagged ear. top pair only mounted (but this is cleft skull pair), inconsequential marginal thin .....	£10-15
50. Set all showing <b>spot above head &amp; behind neck</b> (row 12/5) SG65b-68b lmm.....	£45-50
51. 1d left arrow B18 (6x3), right arrow B10 (includes SG66b) and bottom corner B14 with serial numbers, fresh um but a few discrete fox spots on gum .....	£25-30
52. 3d fine um bottom arrow B4.....	£18-22

### **1933-54 Hyphenated rotogravure**

53. 1936 ½d, Issue 4A, wmk up, SG54aw: a very fine mint bottom left corner block of 10, one stamp only mounted, cat £68+.....	£16-18
54. - ditto - fine lmm/um B12, cat £102 .....	£16-18
55. 1939 ½d Issue 8, top left corner B4 with V17 on row 2/1, mm, and a serial No B6 with mp V4, stamps um (B4 with rounded corner).....	£7-9
56. 1941 ½d Issue 12 top right corner B18 (3x6) in grey & blue shade, dated 18.11.47 in pencil in margin, stamps um .....	£8-10
57. ½d Issue 12 top arrow B4 and serial No. B4 (the latter with sepia centres) fine lmm/um .....	£8-10
58. ½d Aug 1947 Issue 14, top, middle and bottom double rows (so all corners & arrows) fine mint with stamps um. (72) very desirable .....	£35-45
59. - ditto - top right corner B8, serial No B4, half arrow B4 with variety, fine lmm or um beautifully Presented.....	£12-15
60. 1947 ½ds <b>unscreened crosshatch</b> (Issues 15-16):- a B4, marginal pair and another pair, lmm or um(2 pairs) scarce issues.....	£20-25
61. 1948 ½d Issue 17 (the narrow sheet issue with frames only screened) : top and bottom rows and double middle row (so all corners & arrows), fine lm or um .....	£28-32
62. - ditto - fine um B30 (rows 2 to 7/1 to 6), SG114,114b, with the <b>bushtick variety</b> on row 3/1 (rather than usual 3/4), also good V13 on 6/1. cat £90+ .....	£26-30
63. 1948 ½d, Issue 18, all 4 arrow B4's, fine lmm .....	£24-28

64. 1949 ½d Issue 21, the **charcoal** printing (non-varnished ink used for centres) : the bottom 3 rows with both Cyl Nos and arrow (2 stamps top row mm, rest um)..... £32-36
65. 1934 1d Issue 10, top arrow B4, fine lmm..... £8-12
66. 1935 1d, Issue 11, **imperforate pair**, SG56a, cat £180, um ..... £60-80
67. 1935-48 1d's:- Issue 11 pair with V15 & serial No B4, Issue 17 (sunset) serial NoB4 and a B6 in pale shade ex booklet, fine mm or um (16)..... £12-15
68. 1936 1d Issue 12: left & bottom arrow B4's, fine mm..... £25-30
69. 1938 1d Issue 13, right arrow B4, lmm (minor perf faults btm left corner) ..... £14-16
70. 1939 1d Issue 14, bottom arrow B4, lmm..... £10-12
71. 1936 1½d, wmk up, SG57, top corner B's of 4 & 6, B4 with V3 (bulge in frame), pair with broken chimney, 2xbtm left corner B4's. fine lmm or um, cat £147 ..... £25-30
72. 1940 1½d dull gold, SG57, top arrow B14 (7x2) with variety, stamps um but some tone spots on gum. cat £45+..... £10-12
73. - ditto - all 4 arrow B4's, fine lmm (cat "120" in handbook) ..... £25-30
74. Medium format 1½d, Issue 4, **waffle plate**, lmm..... £10-12
75. 1948-9 medium 1½d, Issue 9 pair with V6 (frame break r.3/16) and Issue 10 pair with V13 ("cruciform", r.7/1) both um ..... £6-8
76. Nov.'38 2d blue & violet, top left corner pair, stamps um cat £75 ..... £18-20
77. Nov.'38 2d blue & violet, bottom arrow B4, fine mm cat £150++ (thin in bottom left of margin)..... £40-50
78. - ditto - 2 pairs, shades (one with a major rash!), mm, cat £150..... £18-20
79. - ditto - pair with good V5 "tree on roof", mm ..... £15-18
80. 1941 2d grey & purple - a fine lot on an album page - 9 pairs + a B4, fine mm or um, varieties include "ladder" on row 1/4. cat £715+ ..... £80-90
81. 1938 2d blue & violet pair, 1941 2d grey & purple left & right arrow B4's and bottom arrow in a strip of 3, generally fine mm. cat £400+..... £50-70
82. 1940 3d, development of the "searchlight" flaw (V3) - fine marginal B8 with black serial Nos & stage 1 flaw, the same with red serial Nos and stage 3 flaw, also a vertical pair with stage 2. fine lmm cat £120++..... £32-36
83. 1940 3d : top left & right arrow B4's, bottom arrow pair, top left & both bottom corner B4's (also top rt corner vertical pair not counted in basic cat of £165) arrows and positional pieces worth a considerable premium mm/um..... £35-40
84. 1937 6d type I, fine um B4 with V4 ("**molehill**") - cat £320 ..... £60-70
85. - ditto - fine m(margin only) strip of 3 with V1 (extended top to tree) on row1/10 and 1/12 - actually scarcer than the above! ..... £30-40
86. - ditto - pair with V1 on row 1/10 and top corner pair with the same on 1/12. both fine mm ..... £25-35
87. 6d Type I, 5 pairs including part bottom arrow pair, mm Cat £350 ..... £35-45
88. - ditto - **the ladder flaw** in a fu pair - much scarcer than mint..... £70-80
89. 1939 1/- Issue 3 - fine lmm bottom arrow B4 with marked perf shift between stamps and margin. Cat £110++ ..... £40-45
90. 1939 1/- Issue 3 : 7 mint pairs and a B4 with V2 (bottom arrow pair and an aniline shade um, the rest lmm. cat £605+ ..... £90-100
91. 1939 1/- Issue 3 - a B6, B4 & pair with good V3, fine used cat £108+..... £20-25
92. 1939 1/- Issue 3:- 2xB4's and a pair in marked shades, fine used. cat £90..... £12-14
93. 1939 1/- Issue 3:- B4 and a pair (aniline) and Issue 4 (3 pairs) : fu, cat £108..... £12-14
94. 1948 1/- Issue 4:- 5 pairs and a B4, one pair um rest fine lmm. cat £385 ..... £45-50
95. 1933 5/- black & pale green, **watermark inverted**, fine mm cat £120 ..... £15-20
96. 1933 5/- black & deep green, **wmk inverted**, a scarce shade such, mm..... £20-26
97. 1933 5/- black & green, fu B4 with V1 (stop after "5", r.1/4), p/marked 1948 ..... £12-16
98. 1933 5/- black & blue-green, fu pair with V5 (broken skei) and V6..... £10-12
99. 1933 5/- Five B4's, shades, fu nice lot Cat £210+ ..... £25-30
100. 1954 5/- grey & yellow green with V1 (extended limb "A"), fu, cat £100++ ..... £30-35
101. 1939-44 10/- 2 pairs & a B4, shades, fu (the 1st electric blue & sepia) ..... £7-10
102. - ditto - Five fu B4's, shades ..... £14-18

## **Booklets / booklet material**

103. 1921 1½d pane, wmk inverted, almost straight edge at bottom, vmm..... £12-15
104. 1921 3/- booklet complete (SAHB B4, SG B3), cat £500 : has "*Inverted Watermark 27.2.22*" in ms on front cover - the "1½d" rate on the inside & back covers is over-printed "2". Ideal item for display for someone who has the front cover..... £120-150
105. 1922 3/6 booklet (SAHB B5, SG B4) fine with 2x2d panes (wmk inv) remaining Cat £1400 Complete..... £80-100
106. 1927 Pretoria 1d booklet pane, part selvedge only, poorly cut with straight edge at bottom, largish portion of stamps above showing and small portion of stamps at right with enough showing they were **tête-bêche**. 1 stamp mounted. rare. .... £70-90
107. 1935 2/6 advert booklet complete (SAHB B10, SG B9) Cat £350 - a scuff on the cover, slight even toning & some fox spots on gum of 1st 1d pane ..... £40-50
108. late 1940 2/6 booklet complete (SAHB B18, SG SB15a), fine, cat £180 ..... £45-50
109. early 1941 2/6 booklet complete (SAHB B19, SGSB17) (with 1½d panes) fine ..... £50-60

## **OFFICIALS**

110. 1928 set 3 2d (17.5mm spacing), SGO5, left & right inscriptional B4's, um..... £20-25
111. 1930 set 5 ½d - bottom right corner control B4 (plate 3), mm (SGO7) ..... £20-25
112. 1930 set 5 1d : B4 with control "B" & V8 (broken "L" r.16/11) and a marginal B4 with ovpt misplaced (across perfs), both fine mm. (SGO7) ..... £35-40
113. 1931 set 6 ½d ; right arrow B4 (Issue 1), stamps um ..... £20-25
114. 1931 2/6, SGO11, with V3 (dropped official), mm..... £25-30
115. 1931 2/6, SGO11, a good used pair, scarce. cat £190 ..... £35-45
116. 1934 2d, **watermark inverted**, SGO14w, an attractive used B6 (3 pairs), some creasing top pair and other small faults. Cat £570..... £60-70
117. 1939 2d indigo & violet, SGO23, fine lm and fu matched pairs (row 18/5&6) with stamp V39 "white leaf" on both. Cat £200+..... £35-45
118. A superb registered official envelope (size E10) sent by air from Pretoria to the Union Consul General in Tananarive, Madagascar, Franked a fine B4 2/6 (SGO18a) and strip of 4x 1/- (SGO25) + another 2/6 & 3x6d singles ..... £160-180
119. 1934 2/6 bottom right corner pair, fine mm SGO18a..... £8-12
120. 1947 2/6 blue & brown (SAHB set 21) mm [pair with stamp V2 (line across wagon row 3/1). - one perf stained at left..... £6-10
121. - ditto - fine lmm pair with V5 raised OFFICIAL on row 10/1 ..... £14-18
122. - ditto - fine lmm pair with V5 raised OFFICIAL on row 10/5..... £14-18
123. 1936 ½d set 12, marginal strip of 4 with "dropped official" on last stamps um SGO20 cat £150(++).  
..... £28-35
124. 1939 1/-, SGO25, two fine mm pairs with good stamp Vs 3&4, cat £160+ ..... £28-35
125. 1940 10/-, SGO29, a fu B4 with single cds, cat £1000 ..... £150-180
126. 1948 5/-, SGO26, fine lmm pair with stamp V1 on row 1/4. .... £12-15
127. - ditto - a fine um marginal B4 ..... £30-35
128. 1944(?) 1½d with **diaereses** on 2d "E"s, SGO33a, an unusually fine used strip of 3 a pair cat £475 - nice Item..... £80-100
129. 1947 2d (SGO36a) with **diaereses** on both stamps, mm with a thin next to the hinge mark on left stamp Cat £700..... £60-70
130. 1949-50 ½d, SAHB O118, both cylinder B6's, lmm..... £12-15
131. 1948 10/-, SGO51, fine um marginal pair ..... £20-25

**Please note:- NO BUYERS' PREMIUM : equal bids will go to first received**

**Bids under 85% of lower estimate will not be entered**

**I will try & cope with maximum individual spend limits if required**

*(Editor's note: The ordering of the lots is somewhat mixed in order to minimise the space taken. However, I have provided a heading listing the lots on each double page spread to help the reader. Apologies if it takes more than a few moments to find any particular lot.)*



*Kings Heads—Lots 1 - 18*



Lot 1



Lot 8



Lot 6



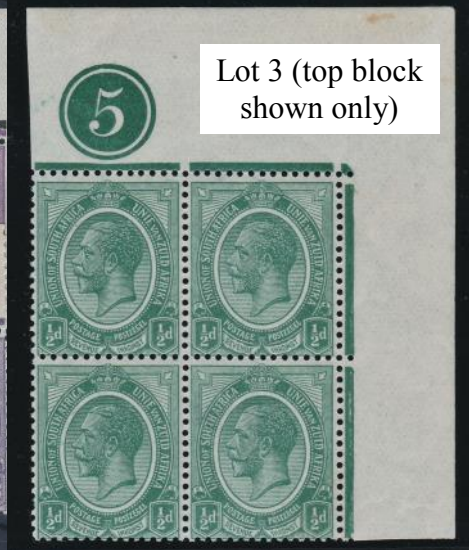
Lot 10



Lot 13



Lot 2



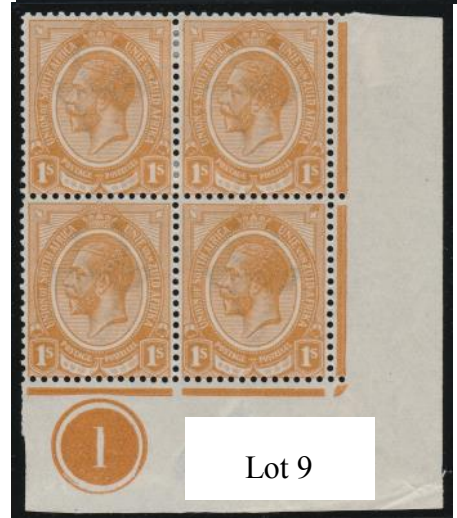
Lot 3 (top block shown only)



Lot 4



Lot 5



Lot 9



Lot 12

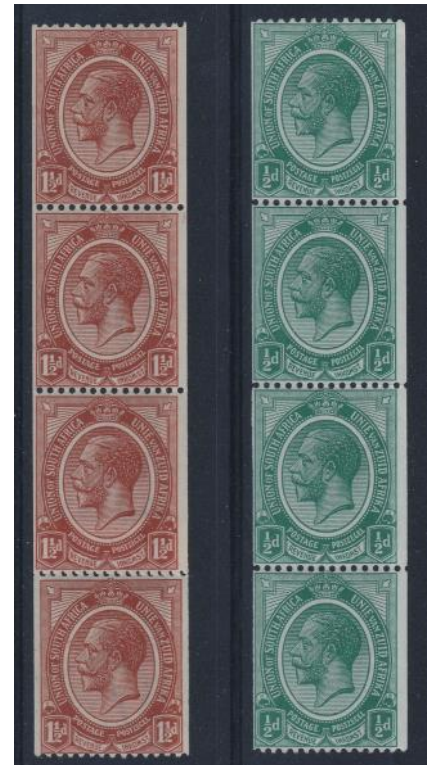




Lot 16



Lot 7



Lot 17



Lot 18



Lot 11



Lot 14



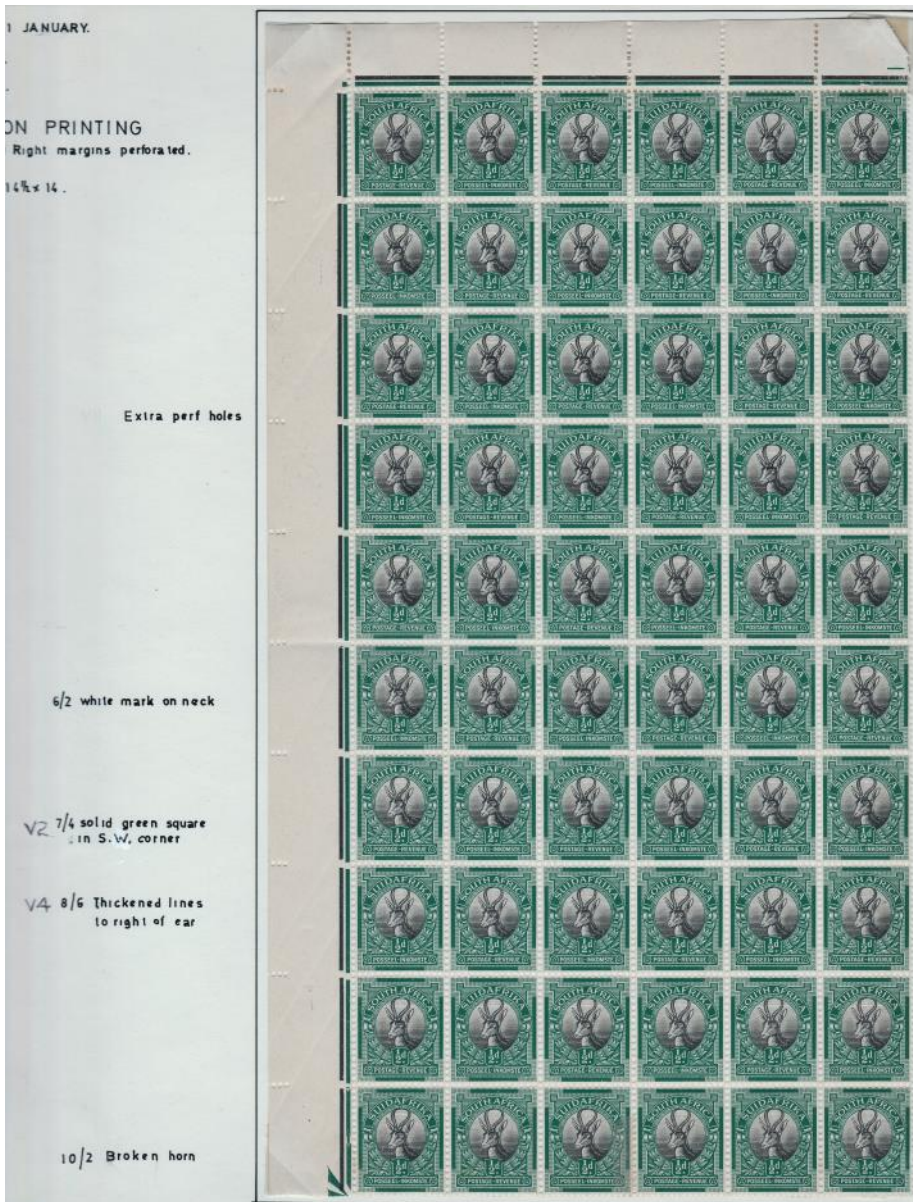
Lot 15



1926-30 London Pictorials Lots 19 - 36

Lot 19 (reduced to 60%)

Lot 21



Lot 25



Lot 29



Lot 30



Lot 26



Lot 20







Lot 27



Lot 22



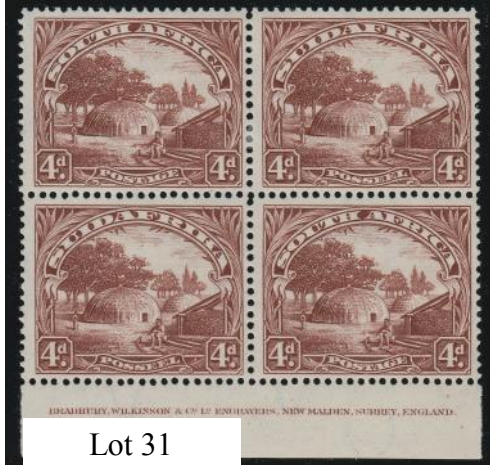
Lot 24



Lot 28



Lot 23



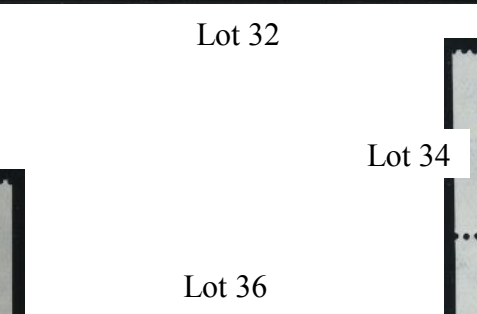
Lot 31



Lot 32



Lot 33



Lot 34



Lot 36



Lot 35





1926-30 London Pictorials (continued) Lots 37 - 39

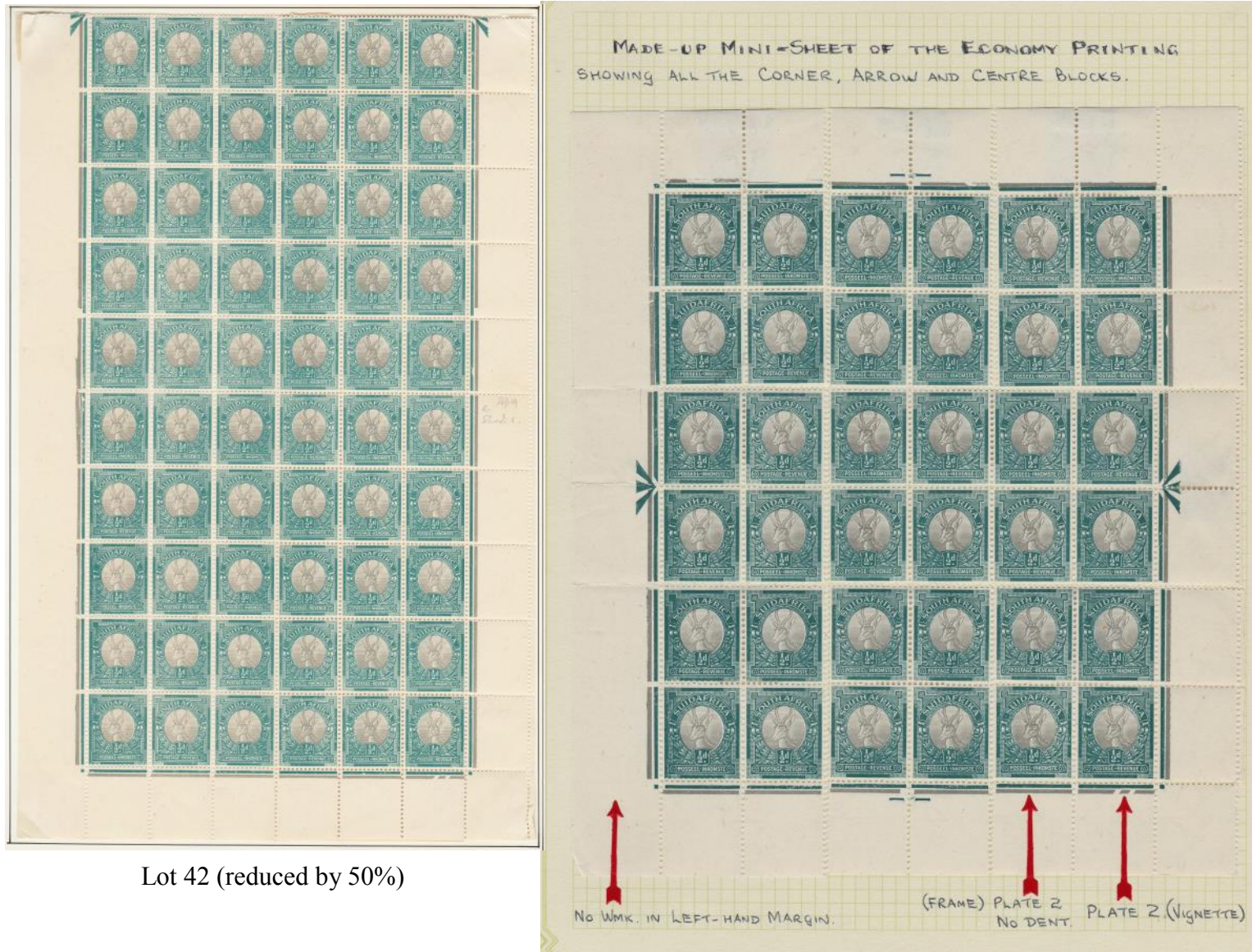


Lot 38

Lot 39

Lot 37

Pretoria typographed Lots 40 - 47



Lot 42 (reduced by 50%)

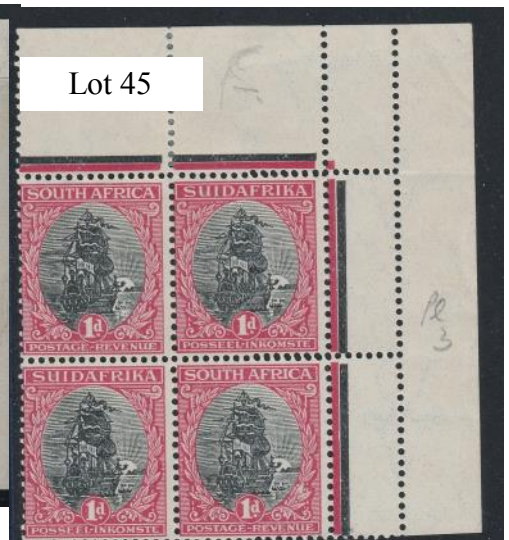
Lot 41 (reduced to 65%)





Lot 40 (reduced to 80%)

40



Lot 45



Lot 44



Lot 46



Lot 47



Lot 43

*Silver Jubilee Lot 50*



Lot 50—6d value only shown)



*Silver Jubilees (continued) Lots 48, 49 and 51, 52*

Lot 48  
(6d value  
only  
shown)



Lot 49

Lot 51 (reduced to 80%) - 1 of 3 pieces



Lot 52



Lot 57  
(reduced to  
85%)

*1933 - 54 Hyphenated Rotogravure  
Lots 53 - 58*



Lot 54



Lot 55



*black head*

2 4 7 7

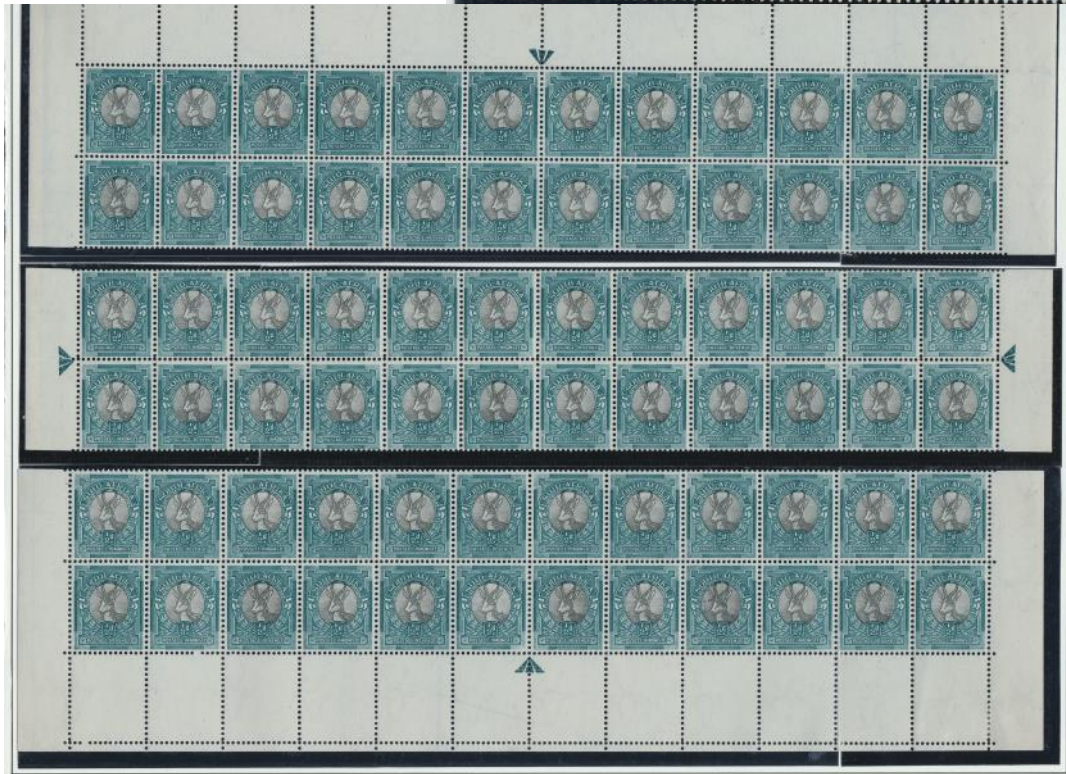


Lot 53 (reduced to 80%)

Lot 56  
(reduced to 95%)



18-11-47

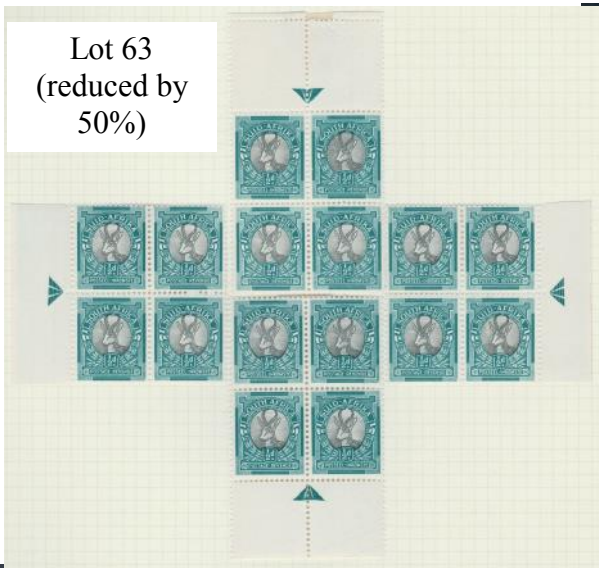


Lot 58  
(reduced to 50%)



1933 - 54 Hyphenated Rotogravure Lots 59 - 64

Lot 63  
(reduced by  
50%)



Lot 62 (detail from 'rows'  
2 and 5 of block shown)

Lot 60



Lot 62 (reduced by 50%)

Lot 61 (reduced to 80%)





Lot 59



deep blue-green and olive-grey



14/11 vert blackline through nose.



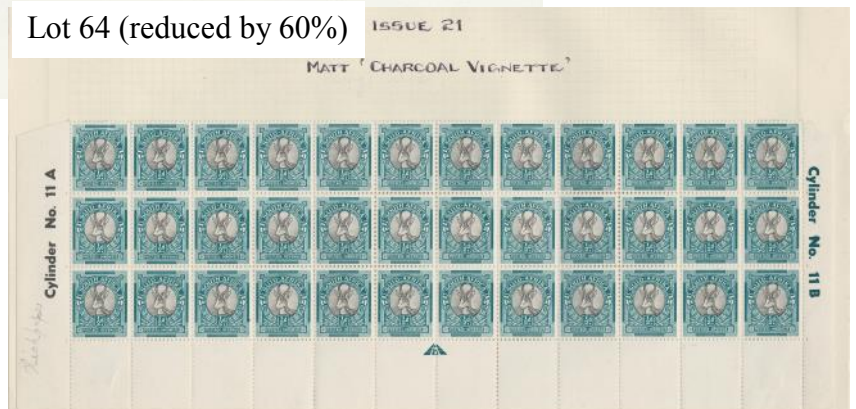
deep grey-green and silver-grey

QUADRUPLE NEGATIVE FLAW.



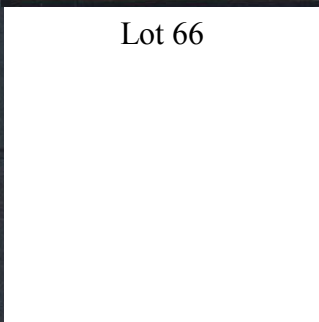
on every odd-numbered Afrikaans stamp of Issue 14. (see 15/11 and 9/11.)

Lot 64 (reduced by 60%)





1933 - 54 Hyphenated Rotogravure Lots 65 - 76



Lot 67 (reduced to 85%)



Lot 69

Lot 72 (reduced to 60%)

Lot 73 (reduced to 48%)



Lot 70





UPRIGHT WATERMARK

ISSUE 1

Lot 71

vw

200



V3 BULGE IN R. FRAME 13/2

V2 BROKEN CHIMNEY 11/6



V6 FLAG ON CHIMNEY 20/2



Lot 74

Lot 76



Lot 75





1933 - 54 Hyphenated  
Rotogravure Lots 77 - 83



Lot 79



Lot 77



Lot 78

Lot 80

541  
Grey + Dark Purple 12.41 Black sheet no.

ladder NR 1/4

10/5 10/6

Idem, varieties

vertical line between F and R of AFRIKA

vertical line through S of South (row 20 nr 6)





Lot 81  
(reduced by 50%)

2. May 1941 Grey & Lido.



Bottom row



93.

Vertical line

Lot 82

STATE 1. A blue surridge  
between rows 4 & 5 1/6.



Black serial No 1940.

(Other sheets also show G.L. Yano dot below L. upper frame Row 3/5 & dot in left margin Row 6/5)

STATE 2.  
Surridge extends  
upwards from 5/6  
to form V shaped  
lines 1, 2 & 3/6.



Row 1/6

Row 2/6

STATE 3.  
as 2 but with  
extensive additional  
retouching.



Red Serial No 1947 - extensive  
retouching of frame plate, especially  
upper part of sheet & especially in  
name plate, name plate surridge & lower line.



Lot 83 (reduced by 50%)



1933 - 54 Hyphenated Rotogravure Lots 84 - 100



Lot 85



Lot 86



Lot 84



Lot 88



Lot 87



Lot 89



Lot 90  
(reduced to 60%)



Lot 91 reduced to 80%



Lot 95



Lot 96



Lot 92



Lot 93



Lot 99



Lot 94 (reduced to 90%)



Lot 97

Lot 98



Lot 100





1933- 54 Hyphenated  
Rotogravure Lots 101 - 102



Lot 101

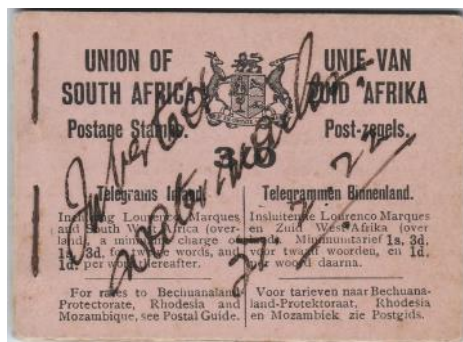


Lot 102

Booklets/Booklet Material Lots 103 - 109



Lot 103 (reduced to 90%)



Lot 104 (reduced to 90%)

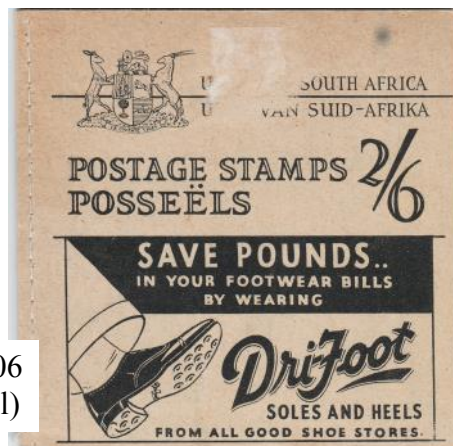


Lot 105 (reduced to 90%)

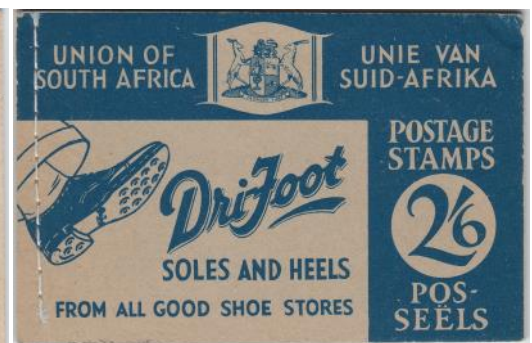


Lot 106 (reduced to 90%)

Lot 106  
(detail)



Lot 107 (reduced to 80%)



Lot 108 (reduced to 90%)





Lot 109 (reduced to 90%)

Officials 110 - 117, 119, 120



Lot 110



Lot 111



Lot 112



Lot 113



Lot 114



Lot 115



Lot 119



Lot 117



Lot 120



Lot 116



Officials 118, 121 - 130



Lot 118 (reduced to 55%)



Lot 121



Lot 122



Lot 123



Lot 124



Lot 125



Lot 127



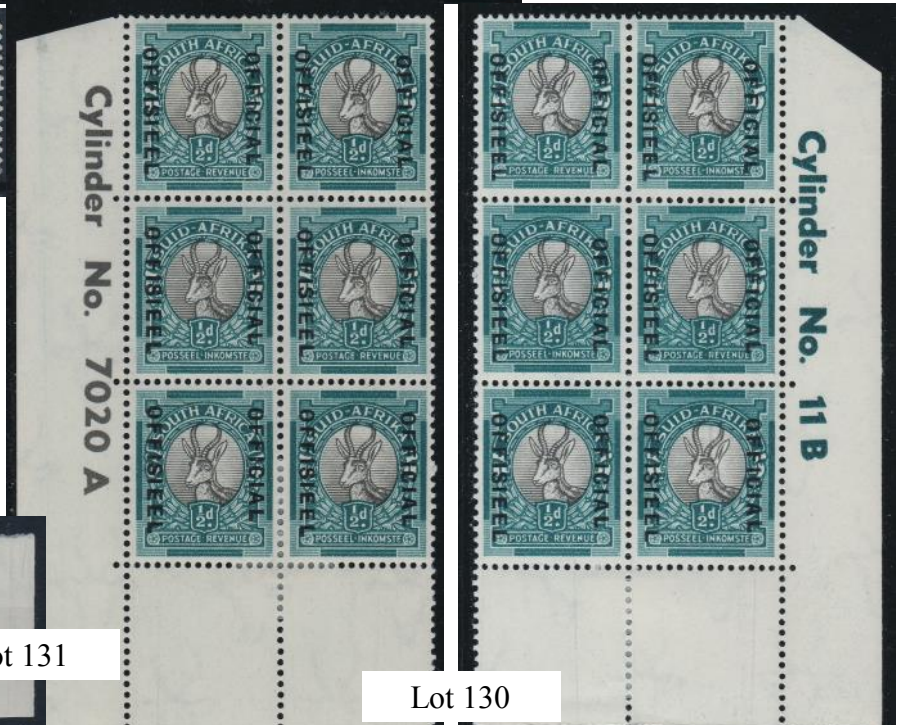
Lot 128



Lot 129



Lot 131



Lot 130