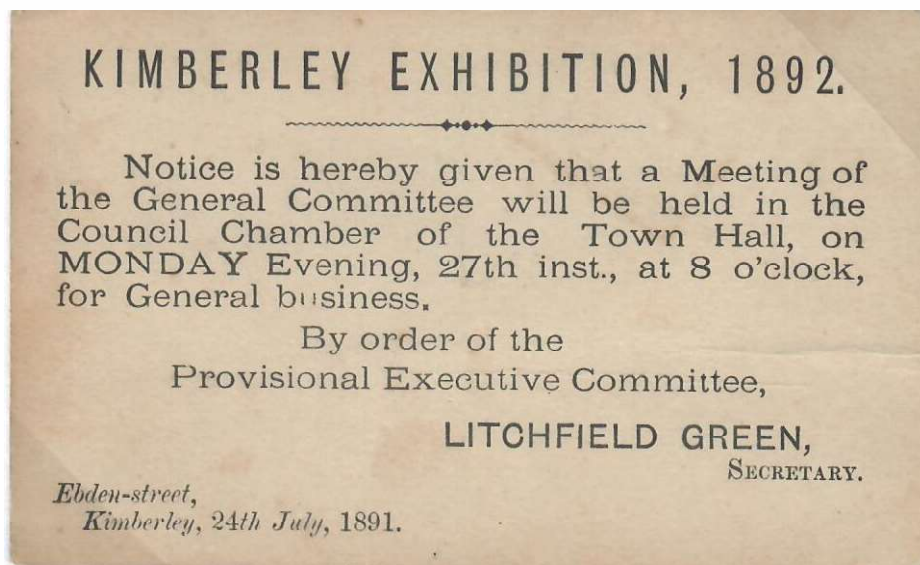


1892 KIMBERLEY EXHIBITION

The South African and International Exhibition, 1892 took place for three months at Kimberley in 1892. It was opened by Sir Henry Loch, the governor of the Cape, on 8 September. It presented exhibits of art, an exhibition of paintings from the royal collection of Her Majesty Queen Victoria, and mining machinery and agricultural implements. The exhibition aroused considerable interest at international level, which resulted in a competition for display space. The government allowed the exhibition secretary free franking privilege before the event, subject to his endorsing the cover. His letters were taken to the civil commissioner's office in Kimberley, where they were franked and handed to the post office. Similarly, letters sent to the exhibition secretary on official exhibition business qualified as official letters, exempt from postage, subject to their being taken to the local commissioner's office, where they were franked with the office franking stamp and then sent through the post.



Postcard posted locally in Kimberley with printed notice on reverse, calling a general committee meeting for Monday 27th July 1891. Although free franking privileges were granted to the secretary it appears that during the initial stages no such facilities were made available.



Reduced facsimile of front of postcard showing cds "KIMBERLEY" dated "JY 25 91".

# Cape of Good Hope

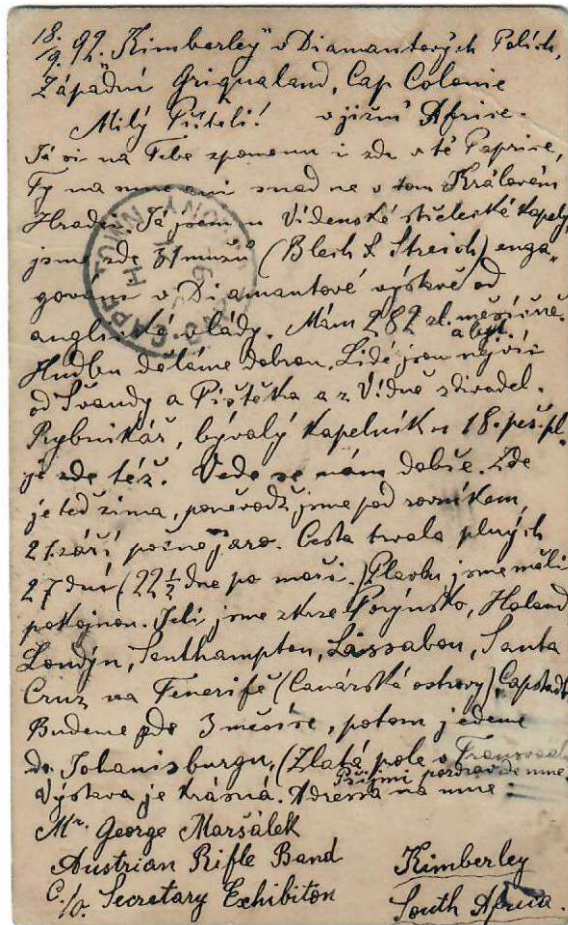
EXHIBITION AND SPECIAL  
POSTMARKS AND CACHETS

Kimberley Exhibition 1892

POSTCARD BY EXHIBITION PARTICIPANT



Postcard posted by a participant of the exhibition dated "SEP 19 92". The show opened in Sep/Dec 1892. Posted to Austria with card taxed at 5 centimes. The card was written by a member of the Austrian Rifle Band c/o. Exhibition items connected with this exhibition are extremely scarce.



Facsimile of the back of the postcard.

ONLY KNOWN COPY OF EXHIBITION CACHET



South African and International Exhibition,  
KIMBERLEY, 1892.

(To be opened 1st September.)

Local Committee (Cape Town Section).

Patrons:

LADY LOCH.

President:

Mrs. WIEGER.

Committee:

Mrs. CAMERON.  
Mrs. GILL.  
Mrs. ISSER.  
Mrs. MICHELL.  
Mrs. FRANCKE.

LADY TENNANT.

Mrs. SACER.

Mrs. JUYA.

MISS OLIVE SCHREINER.

MISS EMANUEL.

Mrs. J. ALF. ELLIS, Secretary.

MADAM,

At a meeting of the Committee held at the Commercial Exchange on the 29th May, it was decided that the wife of each of the Civil Commissioners and Resident Magistrates be communicated with for the purpose of soliciting her kind co-operation in endeavouring to secure from the Ladies in their respective divisions plain and fancy needlework, old relics and other curiosities suitable for exhibit at the forthcoming Kimberley Exhibition.

The accompanying leaflet will convey to some extent the nature of the articles required; but apart from those already enumerated, the Committee would be glad to receive whatever else you may be able to obtain, including specimens of native workmanship.

On your informing me of your willingness to co-operate, arrangements will be made for the free conveyance of your collection to Cape Town, previous to its being despatched to Kimberley.

Special Prizes will be awarded by Lady Loch, Mrs. Wieser and other members of the Committee—we shall communicate with you further on this subject.

I trust the importance of an adequate representation of products at the approaching Exhibition at Kimberley will be sufficient apology for my present application.

I am, yours truly,

MAY ELLIS, Secretary.

➔ Official printed exhibition envelope sent to Wellington ex Cape Town bearing triple oval violet cachet “SOUTH AFRICAN AND INTERNATIONAL EXHIBITION KIMBERLEY 1892” (Goldblatt Type E3), signed by Mrs J Alf Ellis exhibition secretary and dated 19.7.92, “compass wheel” dispatch cancel of Cape Town. Circular letter included in envelope from the Local Committee Cape Town section soliciting items suitable for exhibiting.<sup>1</sup>

Reduced facsimile of enclosed circular.

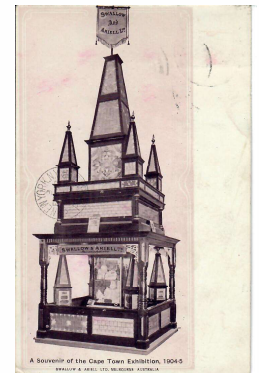
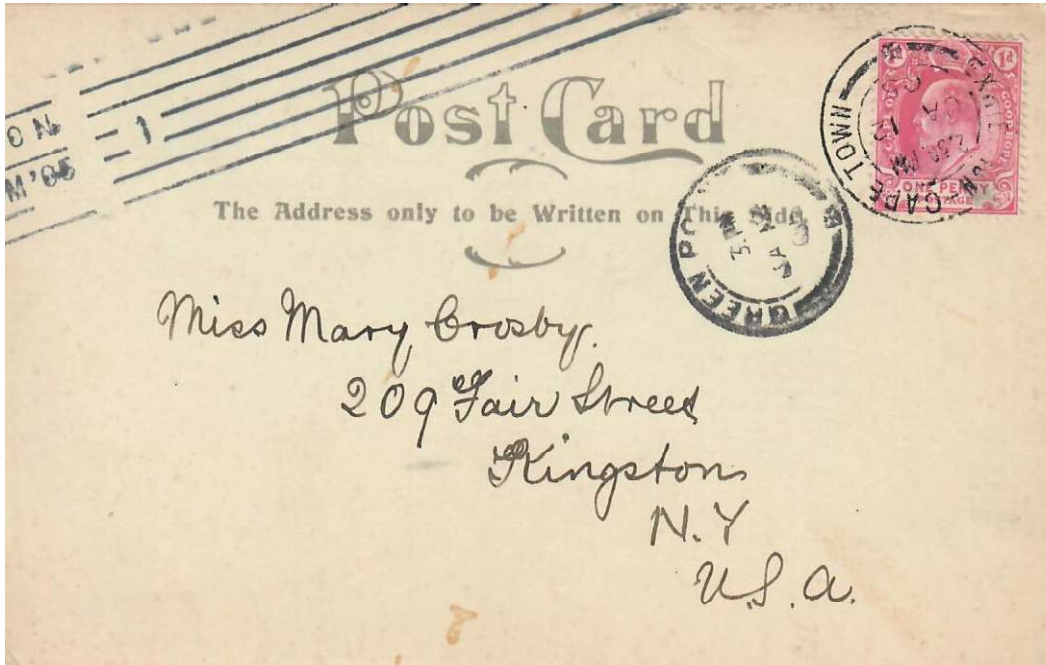
<sup>1</sup>See R. Goldblatt, Postmarks of the Cape of Good Hope (1984), pages 187-188. Goldblatt mentions that only one item for each mark illustrated is known.

# Cape of Good Hope

EXHIBITION AND SPECIAL EVENTS

CAPE TOWN EXHIBITION

## CAPE TOWN EXHIBITION



➕ The Cape Town national and international industrial exhibition took place in Cape Town from 20 November 1904 to 28 February 1905. Located on Green Point Commons and officially opened on 26 November 1905. A temporary post office and a commemorative datestamp was provided. This commemorative datestamp was the second to be used in the Cape of Good Hope, the previous one being that issued for the Kimberley Exhibition. Goldblatt reports that only a single example of this Cape of Good Hope postmark has been seen on cover and one on piece.<sup>1</sup>



Apparently the only Cape Town Exhibition postcard!

<sup>1</sup> See R. Goldblatt, *Postmarks of the Cape of Good Hope* (1984), pages 188-189.