

SIMONS-TOWN (Hyphen)

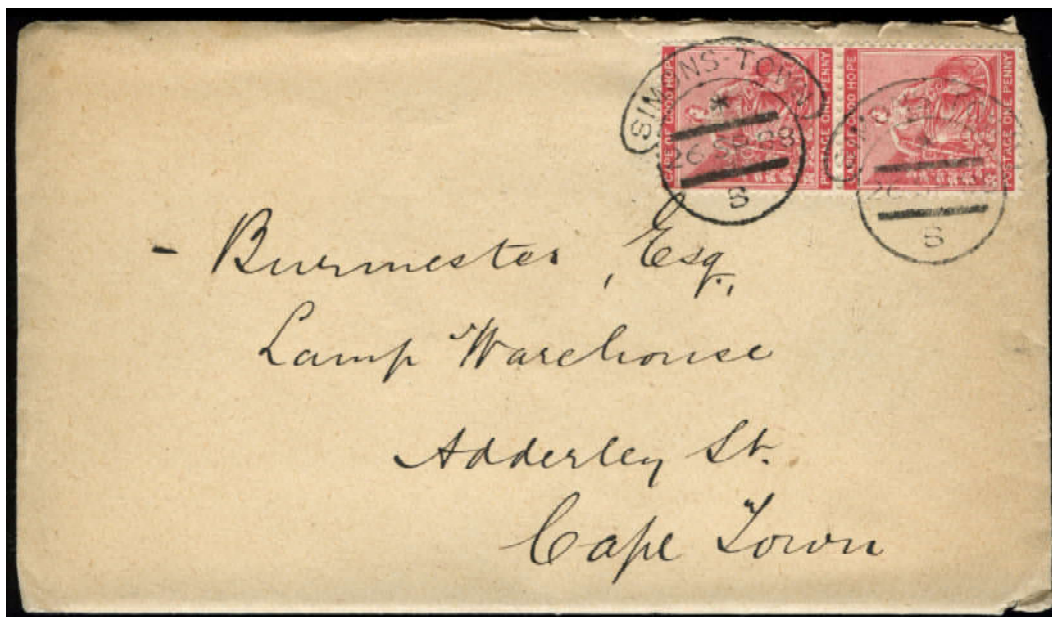
Simons Town (historically also spelt Simonstown) is the last town in our HCD review. This does not mean it is the least important. It was often one of the first to receive new Cape datestamps, a practice that began in 1817 when the CiC (Crown in Circle) handstamp was first issued to Cape Town, then to Stellenbosch, Uitenhage and Simons Town as the Cape's most important towns. The reason for the Simons Town post office's importance was because it served the needs of the Royal Navy which had been based there since 1813. While the HCD is believed to have been unpopular with most of the post offices which used it, Simon Town persisted with it longest of all, from at least June 1888 to July 1903.

Frescura lists the ER and LR for 'HC SIMONS-TOWN' as '11 JA 1889' and '10 DE 1902'.

Our research has revised these dates completely with three new ERs and an LR. The covers below were both previous ERs until displaced by our find of '26 JU 88'.



1888. Cover. SIMONS-TOWN '9 JY 88' to CAPE TOWN.



1888. Cover. SIMONS-TOWN '26 SP 88' to CAPE TOWN.

SIMONS-TOWN (Hyphen) / 1



EARLIEST RECORDED: 26 JU 88 (08/08/23)
TOP: Asterisk - Vertical
BETWEEN BARS: Day, Month, Year
BOTTOM: Time Code Letter C
USED: On dispatch.
SOURCE: S. Hannath

NOTE:
 Not all the postmarks and stamps shown here are reproduced exactly to size.



9 JY 88
TOP: Asterisk - Vertical
BETWEEN BARS: Day, Month, Year
BOTTOM: Time Code Letter A
USED: On dispatch.
SOURCE: S. Hannath



26 SP 88
TOP: Asterisk - Vertical
BETWEEN BARS: Day, Month, Year
BOTTOM: Time Code Letter B
USED: On dispatch.
SOURCE: S. Hannath



8 OC 88
TOP: Asterisk - Vertical
BETWEEN BARS: Day, Month, Year
BOTTOM: Time Code Letter A
USED: On dispatch.
SOURCE: S. Hannath



6 NO 88
TOP: Asterisk - Vertical
BETWEEN BARS: Day, Month, Year
BOTTOM: Time Code Letter C
USED: On dispatch.
SOURCE: S. Hannath



15 AP 89
TOP: Asterisk - Vertical ?
BETWEEN BARS: Day, Month, Year
BOTTOM: Time Code Letter C
USED: On dispatch.
SOURCE: S. Hannath



23 AP 89
TOP: Asterisk - Vertical
BETWEEN BARS: Day, Month, Year
BOTTOM: Time Code Letter C
USED: On dispatch.
SOURCE: S. Hannath

SIMONS-TOWN (Hyphen) / 2



1 JY 89

TOP: Asterisk - Vertical

BETWEEN BARS: Day, Month, Year

BOTTOM: Time Code Letter B

USED: On dispatch.

SOURCE: S. Hannath



xx AU 89

TOP: Asterisk - Vertical

BETWEEN BARS: Day, Month, Year

BOTTOM: Unknown

USED: On dispatch.

SOURCE: A. Visser



27 AU 89

TOP: Asterisk - Vertical

BETWEEN BARS: Day, Month, Year

BOTTOM: Time Code Letter B

USED: As illustration and on dispatch, right.

SOURCE: S. Kelly





xx NO 90

TOP: Asterisk - Vertical

BETWEEN BARS: Day, Month, Year

BOTTOM: Time Code Letter A

USED: On dispatch

SOURCE: S. Kelly



12 NO 90

TOP: Asterisk - Vertical

BETWEEN BARS: Day, Month, Year

BOTTOM: Time Code Letter B

USED: On dispatch.

SOURCE: A. Visser



14 MY 91

TOP: Asterisk - Vertical

BETWEEN BARS: Day, Month, Year

BOTTOM: Time Code Letter D

USED: On dispatch.

SOURCE: A. Visser



1 JY 91

TOP: Asterisk - Vertical

BETWEEN BARS: Day, Month, Year

BOTTOM: Time Code Letter C

USED: On dispatch.

SOURCE: S. Hannath

SIMONS-TOWN (Hyphen) / 3



11 SP 91

TOP: Asterisk - Vertical

BETWEEN BARS: Day, Month, Year

BOTTOM: Time Code Letter C

USED: On dispatch.

SOURCE: A. Visser



5 JA 92

TOP: Asterisk - Vertical

BETWEEN BARS: Day, Month, Year

BOTTOM: Time Code Letter A

USED: On dispatch.

SOURCE: R. Hill



17 MR 92

TOP: Asterisk - Vertical

BETWEEN BARS: Day, Month, Year

BOTTOM: Time Code Letter E

USED: On dispatch

SOURCE: S. Kelly



27 MY 92

TOP: Asterisk - Vertical

BETWEEN BARS: Day, Month, Year

BOTTOM: Time Code Letter A

USED: On dispatch

SOURCE: S. Kelly



2 JY 92

TOP: Asterisk - Vertical

BETWEEN BARS: Month, Day, Year

BOTTOM: Time Code Letter B

USED: As illustration only

SOURCE: F. Frescura



28 DE 92

TOP: Asterisk - Vertical

BETWEEN BARS: Day, Month, Year

BOTTOM: Not visible

USED: On dispatch.

SOURCE: R. Hill



xx AP 94

TOP: Asterisk - Vertical

BETWEEN BARS: Day, Month, Year

BOTTOM: Time Code Letter C

USED: On dispatch

SOURCE: S. Kelly

SIMONS-TOWN (Hyphen) / 4



x2 SP 94
TOP: Asterisk - Horizontal
BETWEEN BARS: Day, Month, Year
BOTTOM: Time Code Letter D
USED: On dispatch
SOURCE: S. Kelly



27 FE 95
TOP: Asterisk - Horizontal
BETWEEN BARS: Day, Month, Year
BOTTOM: Time Code Letter D
USED: On dispatch.
SOURCE: S. Hannath



1 JY 96
TOP: Asterisk - Vertical
BETWEEN BARS: Day, Month, Year
BOTTOM: Time Code Letter C
USED: On dispatch.
SOURCE: S. Hannath



8 JY 96
TOP: Asterisk - Vertical
BETWEEN BARS: Day, Month, Year
BOTTOM: Time Code Letter C
USED: On dispatch.
SOURCE: S. Kelly



28 JY 97
TOP: Asterisk - Vertical
BETWEEN BARS: Day, Month, Year
BOTTOM: Time Code Letter B
USED: On dispatch.
SOURCE: S. Kelly

***** (*****



3 NO 97
TOP: Asterisk - Vertical
BETWEEN BARS: Day, Month, Year
BOTTOM: Time Code Letter C
USED: On dispatch.
SOURCE: S. Kelly



29 DE 97
TOP: Asterisk - Vertical
BETWEEN BARS: Day, Month, Year
BOTTOM: Time Code Letter C
USED: On dispatch.
SOURCE: S. Kelly

SIMONS-TOWN (Hyphen) / 5



17 JA 98

TOP: Asterisk - Vertical

BETWEEN BARS: Day, Month, Year

BOTTOM: Time Code Letter D

USED: On dispatch.

SOURCE: R. Hill



30 MR 98

TOP: Asterisk - Vertical

BETWEEN BARS: Day, Month, Year

BOTTOM: Time Code Letter C

USED: On dispatch.

SOURCE: R. Hill



7 SP 98

TOP: Asterisk - Vertical

BETWEEN BARS: Day, Month, Year

BOTTOM: Time Code Letter C

USED: On dispatch.

SOURCE: S. Hannath



12 AP 98

TOP: Asterisk - Vertical

BETWEEN BARS: Day, Month, Year

BOTTOM: Time Code Letter D

USED: On dispatch.

SOURCE: S. Kelly



4 JA 99

TOP: Asterisk - Horizontal

BETWEEN BARS: Day, Month, Year

BOTTOM: Time Code Letter C ?

USED: On dispatch.

SOURCE: S. Kelly



2x xU 99

TOP: Asterisk - Horizontal

BETWEEN BARS: Day, Month, Year

BOTTOM: Time Code Letter D ?

USED: On dispatch.

SOURCE: S. Kelly

SIMONS-TOWN (Hyphen) / 6



20 SP 99

TOP: Asterisk - Horizontal

BETWEEN BARS: Day, Month, Year

BOTTOM: Time Code Letter C

USED: On dispatch.

SOURCE: S. Kelly



3 FE 00

TOP: Asterisk - Vertical

BETWEEN BARS: Day, Month, Year

BOTTOM: Time Code Letter A

USED: On dispatch.

SOURCE: A. Visser



26 MR 00

TOP: Asterisk - Vertical

BETWEEN BARS: Day, Month, Year

BOTTOM: Time Code Letter D

USED: On dispatch.

SOURCE: S. Hannath



28 JY 00

TOP: Asterisk - Vertical

BETWEEN BARS: Day, Month, Year

BOTTOM: Time Code Letter D

USED: On dispatch.

SOURCE: A. Visser



22 SP 00

TOP: Asterisk - Vertical

BETWEEN BARS: Day, Month, Year

BOTTOM: Time Code Letter D

USED: On dispatch.

SOURCE: S. Hannath

SIMONS-TOWN (Hyphen) / 7



21 NO 00
TOP: Asterisk - Horizontal
BETWEEN BARS: Day, Month, Year
BOTTOM: Time Code Letter A
USED: On dispatch.
SOURCE: S. Hannath



3 AP 01
TOP: Asterisk - Horizontal
BETWEEN BARS: Day, Month, Year
BOTTOM: Time Code Letter C
USED: On dispatch.
SOURCE: S. Hannath



17 AP 01
TOP: Asterisk - Horizontal
BETWEEN BARS: Day, Month, Year
BOTTOM: Time Code Letter C
USED: On dispatch.
SOURCE: S. Hannath



5 JU 01
TOP: Asterisk - Horizontal
BETWEEN BARS: Day, Month, Year
BOTTOM: Time Code Letter C
USED: On dispatch.
SOURCE: S. Hannath



8 AU 01
TOP: Asterisk - Vertical
BETWEEN BARS: Day, Month, Year
BOTTOM: Time Code Letter D
USED: On dispatch.
SOURCE: S. Hannath



7 OC 01
TOP: Asterisk - Vertical
BETWEEN BARS: Day, Month, Year
BOTTOM: Time Code Letter A
USED: On dispatch.
SOURCE: S. Hannath

SIMONS-TOWN (Hyphen) / 8



14 NO 01

TOP: Asterisk - Vertical

BETWEEN BARS: Day, Month, Year

BOTTOM: Time Code Letter C

USED: On dispatch.

SOURCE: Screengrab eBay



23 DE 01

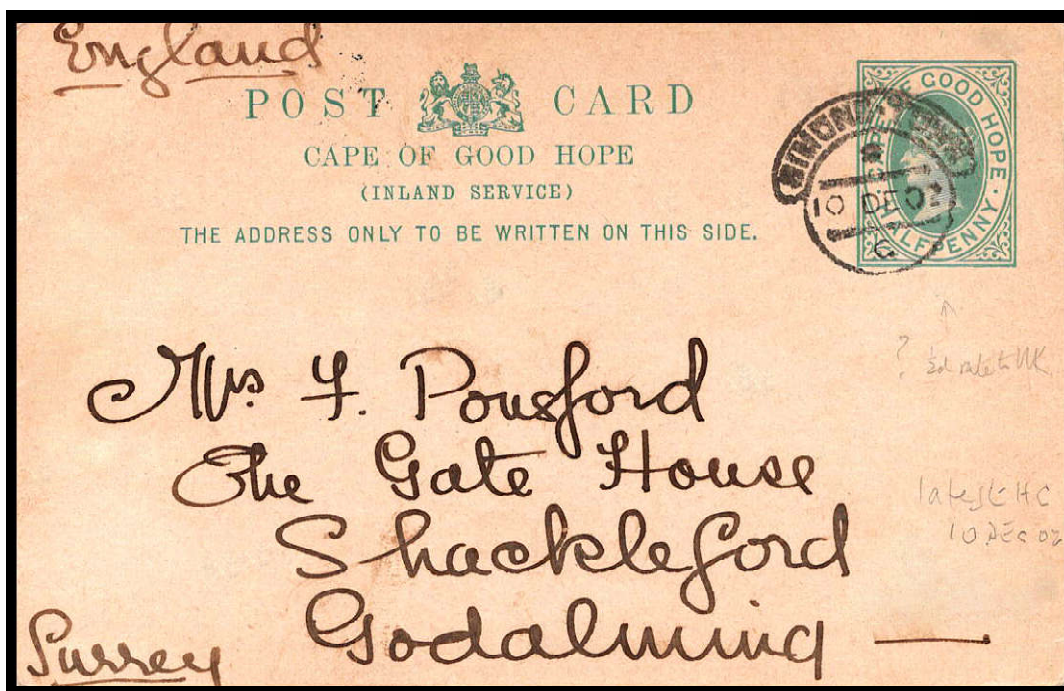
TOP: Asterisk - Vertical

BETWEEN BARS: Day, Month, Year

BOTTOM: Time Code Letter D

USED: On dispatch

SOURCE: Screengrab eBay



1902. Postcard. SIMONS-TOWN '10 DE 02' to GODALMING, GB. (M. Berry)

This was previously Frescura / Vissers LR until replaced by the next postcard.

10 DE 02

TOP: Asterisk - Indeterminate

BETWEEN BARS: Day, Month, Year

BOTTOM: Time Code Letter C or G

USED: On dispatch.

SOURCE: M. Berry

SIMONS-TOWN (Hyphen) / 9



23 DE 02

TOP: Asterisk - Indecipherable

BETWEEN BARS: Day, Month, Year

BOTTOM: Time Code Letter F

USED: On dispatch.

SOURCE: S. Hannath

NOTE:

The Year is confirmed by both the accompanying letter and the cover's receiving datestamp.



20 JA 03

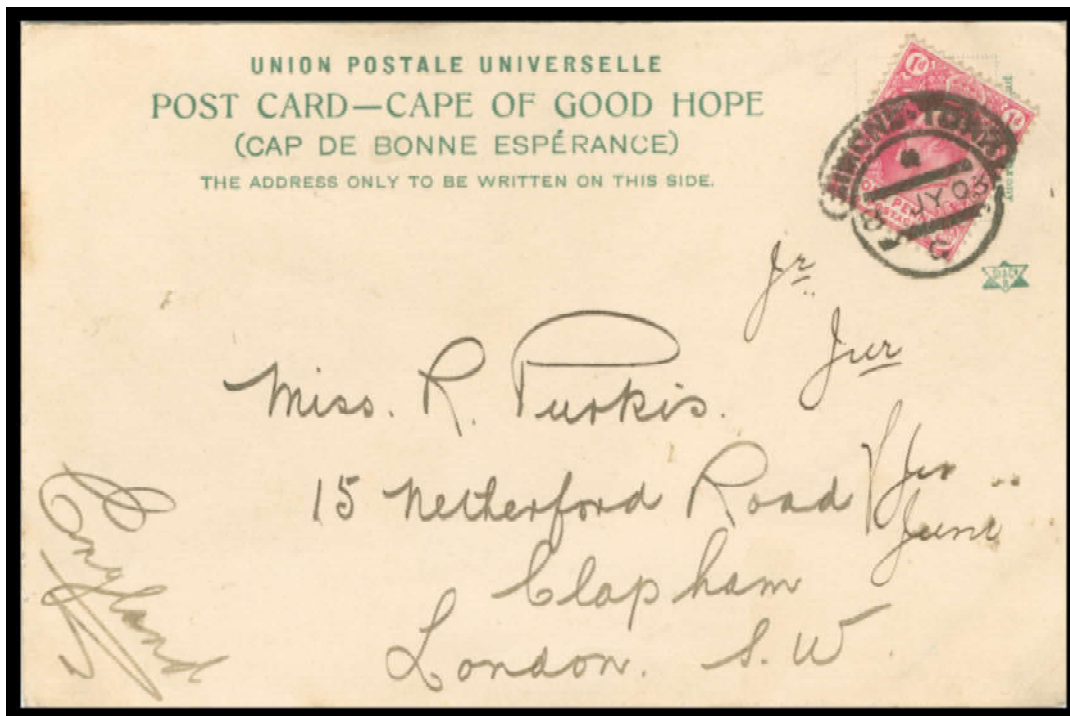
TOP: Asterisk - Indecipherable

BETWEEN BARS: Day, Month, Year

BOTTOM: Time Code Letter C

USED: On dispatch.

SOURCE: S. Hannath



1903. Postcard. SIMONS-TOWN '8 JY 03' to LONDON, GB. (S. Hannath)

This postcard is currently the second Last Recorded use of the SIMONS-TOWN HCD.

8 JY 03

TOP: Asterisk - Horizontal

BETWEEN BARS: Day, Month, Year

BOTTOM: Time Code Letter C or G

USED: On dispatch.

SOURCE: S. Hannath

SEE LAST RECORDED OVERLEAF

SIMONS-TOWN (Hyphen) / 10

LAST RECORDED: 2 DE 03 (08/08/23)



2 DE 03

TOP: Asterisk - Vertical

BETWEEN BARS: Day, Month, Year

BOTTOM: Time Code Letter A

USED: On dispatch.

SOURCE: S. Hannath

Our LR of '2 DE 03' has a notable large dot. In some of the later SIMONS TOWN HCDs this appears as almost a rectangular block. In earlier, cleaner, less worn examples of the HCD it is more typically seen as a thin hyphen. By 1900 the hyphen has morphed into this large dot / block. Is this is a new HCD 'with block separator' or is it just the effect of long use and abuse? I suspect the latter but wonder "how a thin hyphen can become so thick?" The late HCD postmarks are generally 'heavy', the result of dust and ink adhering to the handstamp during long periods of irregular cleaning and maintenance combined with general wear and tear.